

## CSTF1 Polyclonal antibody

Catalog Number: 10064-2-AP

5 Publications

## Basic Information

## Catalog Number:

10064-2-AP

## Size:

150ul , Concentration: 900 µg/ml by Nanodrop and 333 µg/ml by Bradford method using BSA as the standard;

## Source:

Rabbit

## Isotype:

IgG

## Immunogen Catalog Number:

AG0109

## GenBank Accession Number:

BC001011

## GeneID (NCBI):

1477

## Full Name:

cleavage stimulation factor, 3' pre-RNA, subunit 1, 50kDa

## Calculated MW:

48.3 kDa

## Observed MW:

50 kDa

## Purification Method:

Antigen affinity purification

## Recommended Dilutions:

WB 1:500-1:1000

IP 0.5-4.0 ug for IP and 1:500-1:1000 for WB

## Applications

## Tested Applications:

IP, WB, ELISA

## Cited Applications:

WB

## Species Specificity:

human, mouse, rat

## Cited Species:

human, rat, mouse

## Positive Controls:

WB : HeLa cells, K-562 cells

IP : NIH/3T3 cells,

## Background Information

Cleavage stimulation factor (CstF), a heterotrimeric protein with subunits of 77, 64, and 50 kD (CstF-77, -64, and -50), is a polyadenylation factor that helps to specify the site of processing. CstF recognizes the G+U-rich element, a sequence located downstream of the cleavage site. CstF-50 subunit interacts with the COOH-terminal domain of the RNAP II largest subunit (CTD). This subunit may be responsible for the interaction of CSTF with other factors to form a stable complex on the pre-mRNA, and multiple WD domains are required for protein interactions.

## Notable Publications

Author	Pubmed ID	Journal	Application
J Dai	26311342	Andrology	
Patricia Uguen	12941705	EMBO J	WB
Ziqian Min	36444304	iScience	

## Storage

## Storage:

Store at -20°C. Stable for one year after shipment.

## Storage Buffer:

PBS with 0.02% sodium azide and 50% glycerol pH 7.3.

Aliquoting is unnecessary for -20°C storage

\*\*\* 20ul sizes contain 0.1% BSA

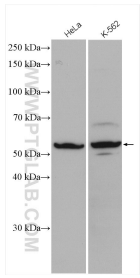
For technical support and original validation data for this product please contact:

T: 1 (888) 4PTGLAB (1-888-478-4522) (toll free in USA), or 1(312) 455-8498 (outside USA)

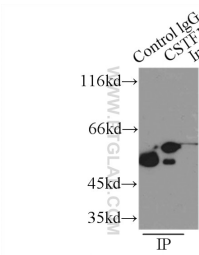
E: [proteintech@ptglab.com](mailto:proteintech@ptglab.com)  
W: [ptglab.com](http://ptglab.com)

This product is exclusively available under Proteintech Group brand and is not available to purchase from any other manufacturer.

Selected Validation Data



Various lysates were subjected to SDS PAGE followed by western blot with 10064-2-AP (CSTF1 antibody) at dilution of 1:500 incubated at room temperature for 1.5 hours.



IP Result of anti-CSTF1 (IP:10064-2-AP, 2ug; Detection:10064-2-AP 1:500) with NIH/3T3 cells lysate 2500ug.