

For Research Use Only

PRPF3 Polyclonal antibody

Catalog Number: 10106-1-AP

5 Publications



Basic Information

Catalog Number:

10106-1-AP

Size:

150ul, Concentration: 900 ug/ml by Nanodrop and 300 ug/ml by Bradford method using BSA as the standard;

Source:

Rabbit

Isotype:

IgG

Immunogen Catalog Number:

AG0154

GenBank Accession Number:

BC000184

GeneID (NCBI):

9129

UNIPROT ID:

O43395

Full Name:

PRP3 pre-mRNA processing factor 3 homolog (S. cerevisiae)

Calculated MW:

78 kDa

Observed MW:

90 kDa, 78 kDa

Purification Method:

Antigen affinity purification

Recommended Dilutions:

WB 1:500-1:2000

IP 0.5-4.0 ug for 1.0-3.0 mg of total protein lysate

IHC 1:50-1:500

Applications

Tested Applications:

WB, IHC, IP, ELISA

Cited Applications:

WB, IF

Species Specificity:

human, mouse, rat

Cited Species:

human, mouse

Positive Controls:

WB : Y79 cells, HepG2 cells, L02 cells, mouse brain tissue, mouse liver tissue

IP : mouse liver tissue,

IHC : human stomach tissue,

Note-IHC: suggested antigen retrieval with TE buffer pH 9.0; (*) Alternatively, antigen retrieval may be performed with citrate buffer pH 6.0

Background Information

The pre-mRNA splicing occurs in spliceosomes, which consist of four ribonucleoprotein (snRNP) particles (U1, U2, U5 and U4/U6) and more than fifty proteins. This U4/U6-associated splicing factor, Hrp3p, is a 77 kDa protein, which is homologous to the Saccharomyces cerevisiae splicing factor Prp3p and may play a role in spliceosome assembly. Western blot analysis of HeLa cell nuclear extracts detected PRP3 protein at an apparent molecular mass of about 90 kD (PMID: 9328476). The discrepancy between the molecular mass reported here and that predicted from the Hrp3p coding sequence can be attributed, at least partially, to the highly positive charge; its value of predicted isoelectric point (IP) is 9.99. This antibody is a rabbit polyclonal antibody raised against an internal region of human PRPF3. A predicted molecular mass of 77 kDa and the gene is named PRPF3 because it is homologous to the yeast PRP3 gene. We noticed that although the predicted molecular mass of PRPF3 is 77 kDa, the protein produced in E.coli migrated like a 90 kDa protein in SDS-PAGE. (PMID: 9328476)

Notable Publications

Author	Pubmed ID	Journal	Application
Junqiang Li	35260078	Cell Mol Biol Lett	IF
Kimiyoshi Yano	34144037	J Biol Chem	WB
Tanackovic Goranka G	21378395	Hum Mol Genet	WB

Storage

Storage:

Store at -20°C. Stable for one year after shipment.

Storage Buffer:

PBS with 0.02% sodium azide and 50% glycerol pH 7.3.

Aliquoting is unnecessary for -20°C storage

*** 20ul sizes contain 0.1% BSA

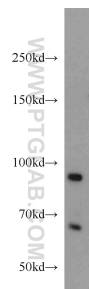
For technical support and original validation data for this product please contact:

T: 1 (888) 4PTGLAB (1-888-478-4522) (toll free in USA), or 1(312) 455-8498 (outside USA)

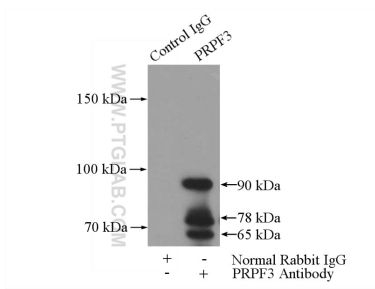
E: proteintech@ptglab.com
W: ptglab.com

This product is exclusively available under Proteintech Group brand and is not available to purchase from any other manufacturer.

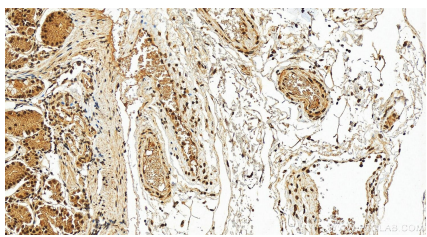
Selected Validation Data



Y79 cells were subjected to SDS PAGE followed by western blot with 10106-1-AP (PRPF3 antibody) at dilution of 1:1000 incubated at room temperature for 1.5 hours.



IP result of anti-PRPF3 (IP:10106-1-AP, 5ug; Detection:10106-1-AP 1:500) with mouse liver tissue lysate 4000ug.



Immunohistochemical analysis of paraffin-embedded human stomach tissue slide using 10106-1-AP (PRPF3 antibody) at dilution of 1:200 (under 20x lens). Heat mediated antigen retrieval with Tris-EDTA buffer (pH 9.0).