

For Research Use Only

Calpain 6 Polyclonal antibody

Catalog Number: 10120-1-AP

4 Publications



Basic Information

Catalog Number:

10120-1-AP

Size:

150ul, Concentration: 500 ug/ml by Nanodrop;

Source:

Rabbit

Isotype:

IgG

Immunogen Catalog Number:

AG0160

GenBank Accession Number:

BC000730

GeneID (NCBI):

827

UNIPROT ID:

Q9Y6Q1

Full Name:

calpain 6

Calculated MW:

75 kDa

Observed MW:

66-75 kDa

Purification Method:

Antigen affinity purification

Recommended Dilutions:

WB 1:500-1:1000

IP 0.5-4.0 ug for 1.0-3.0 mg of total protein lysate

IHC 1:200-1:800

Applications

Tested Applications:

WB, IHC, IP, ELISA

Cited Applications:

WB, IHC, IF

Species Specificity:

human

Cited Species:

human, rat

Note-IHC: suggested antigen retrieval with TE buffer pH 9.0; (*) Alternatively, antigen retrieval may be performed with citrate buffer pH 6.0

Positive Controls:

WB : human placenta tissue, mouse placenta tissue, A549 cells

IP : human placenta tissue,

IHC : human intrahepatic cholangiocarcinoma tissue,

Notable Publications

Author	Pubmed ID	Journal	Application
Xiaojuan Su	31403686	J Neuropathol Exp Neurol	WB,IF
Shinobu Goto	32852077	Am J Reprod Immunol	WB,IHC
Qianqi Zhu	37468984	Cell Biosci	IF

Storage

Storage:

Store at -20°C. Stable for one year after shipment.

Storage Buffer:

PBS with 0.02% sodium azide and 50% glycerol pH 7.3.

Aliquoting is unnecessary for -20°C storage

*** 20ul sizes contain 0.1% BSA

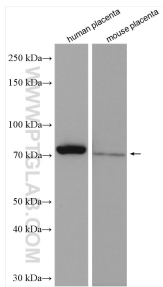
For technical support and original validation data for this product please contact:

T: 1 (888) 4PTGLAB (1-888-478-4522) (toll free in USA), or 1(312) 455-8498 (outside USA)

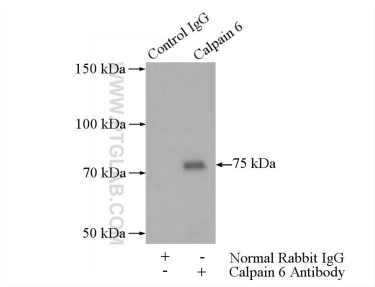
E: proteintech@ptglab.com
W: ptglab.com

This product is exclusively available under Proteintech Group brand and is not available to purchase from any other manufacturer.

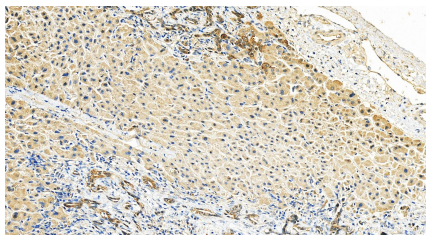
Selected Validation Data



Various lysates were subjected to SDS PAGE followed by western blot with 10120-1-AP (Calpain 6 antibody) at dilution of 1:600 incubated at room temperature for 1.5 hours.



IP result of anti-Calpain 6 (IP:10120-1-AP, 4ug; Detection:10120-1-AP 1:300) with human placenta tissue lysate 1520ug.



Immunohistochemical analysis of paraffin-embedded human intrahepatic cholangiocarcinoma tissue slide using 10120-1-AP (Calpain 6 antibody) at dilution of 1:400 (under 20x lens). Heat mediated antigen retrieval with Tris-EDTA buffer (pH 9.0).