

For Research Use Only

LSM8 Polyclonal antibody

Catalog Number: 10134-1-AP

1 Publications



Basic Information

Catalog Number: 10134-1-AP	GenBank Accession Number: BC002742	Purification Method: Antigen affinity purification
Size: 150ul , Concentration: 700 ug/ml by Nanodrop;	GeneID (NCBI): 51691	Recommended Dilutions: WB 1:200-1:1000
Source: Rabbit	UNIPROT ID: O95777	IHC 1:50-1:500
Isotype: IgG	Full Name: LSM8 homolog, U6 small nuclear RNA associated (S. cerevisiae)	IF/ICC 1:750-1:3000
Immunogen Catalog Number: AG0178	Calculated MW: 14 kDa / 75 kDa	
	Observed MW: 11 kDa	

Applications

Tested Applications: WB, IHC, IF/ICC, ELISA	Positive Controls:
Cited Applications: WB	WB : HeLa cells, HL-60 cells
Species Specificity: human	IHC : human kidney tissue,
Cited Species: human	IF/ICC : HeLa cells,

Note-IHC: suggested antigen retrieval with TE buffer pH 9.0; (*) Alternatively, antigen retrieval may be performed with citrate buffer pH 6.0

Background Information

Sm-like proteins were identified in a variety of organisms based on sequence homology with the Sm protein family. Sm-like proteins contain the Sm sequence motif, which consists of 2 regions separated by a linker of variable length that folds as a loop. The Sm-like proteins are thought to form a stable heteromer present in tri-snRNP particles, which are important for pre-mRNA splicing [PMID:15075370]. Lsm2-Lsm8 (Lsm stands for Like Sm), binds and stabilizes the 3' end of the spliceosomal U6 snRNA. Lsm proteins facilitate the annealing of U6 snRNA with U4 snRNA in vitro and interact with the U4/U6 annealing factor Prp24, suggesting that Lsm proteins function in U4/U6 snRNP formation in vivo [PMID:15485930, 17251193].

Notable Publications

Author	Pubmed ID	Journal	Application
Xin Wang	32017896	Mol Cell	WB

Storage

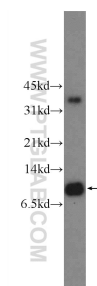
Storage:
Store at -20°C. Stable for one year after shipment.
Storage Buffer:
PBS with 0.02% sodium azide and 50% glycerol pH 7.3.
Aliquoting is unnecessary for -20°C storage

*** 20ul sizes contain 0.1% BSA

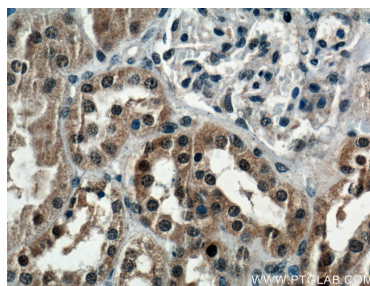
For technical support and original validation data for this product please contact:
T: 1 (888) 4PTGLAB (1-888-478-4522) (toll free in USA), or 1(312) 455-8498 (outside USA)
E: proteintech@ptglab.com
W: ptglab.com

This product is exclusively available under Proteintech Group brand and is not available to purchase from any other manufacturer.

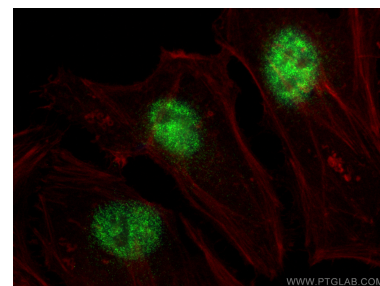
Selected Validation Data



HeLa cells were subjected to SDS PAGE followed by western blot with 10134-1-AP (LSM8 Antibody) at dilution of 1:300 incubated at room temperature for 1.5 hours.



Immunohistochemical analysis of paraffin-embedded human kidney tissue slide using 10134-1-AP (LSM8 Antibody) at dilution of 1:200 (under 40x lens).



Immunofluorescent analysis of (4% PFA) fixed HeLa cells using LSM8 antibody (10134-1-AP) at dilution of 1:1500 and CoraLite® 488-Conjugated Goat Anti-Rabbit IgG(H+L) (SA00013-2), CL594-Phalloidin (red).