

For Research Use Only

NSE Polyclonal antibody

Catalog Number: 10149-1-AP

Featured Product

36 Publications



Basic Information

Catalog Number:

10149-1-AP

Size:

150ul, Concentration: 400 ug/ml by Nanodrop;

Source:

Rabbit

Isotype:

IgG

Immunogen Catalog Number:

AG0196

GenBank Accession Number:

BC002745

GeneID (NCBI):

2026

UNIPROT ID:

P09104

Full Name:

enolase 2 (gamma, neuronal)

Calculated MW:

47 kDa

Observed MW:

47 kDa

Purification Method:

Antigen affinity purification

Recommended Dilutions:

WB: 1:5000-1:50000

IP: 0.5-4.0 ug for 1.0-3.0 mg of total protein lysate

IHC: 1:100-1:400

IF/ICC: 1:200-1:800

Applications

Tested Applications:

WB, IHC, IF/ICC, IP, ELISA

Cited Applications:

WB, IHC, IF

Species Specificity:

human, mouse, rat

Cited Species:

human, mouse, rat, goat, duck

Positive Controls:

WB: HeLa cells, human brain tissue, U-251 cells, SH-SY5Y cells, mouse brain tissue, rat brain tissue

IP: mouse brain tissue,

IHC: human brain tissue, human lung tissue, human testis tissue

IF/ICC: HeLa cells,

Note-IHC: suggested antigen retrieval with TE buffer pH 9.0; (*) Alternatively, antigen retrieval may be performed with citrate buffer pH 6.0

Background Information

NSE, also named as ENO2, belongs to the enolase family. Enolases are cytoplasmic glycolytic enzymes that may be involved in differentiation. The enolase has three isoenzymes, alpha, beta and gamma. The alpha form is expressed in most tissues, whereas the beta form is expressed in muscle tissue. The gamma enolase (ENO2), a homodimer, is primarily localized in neurons and neuroendocrine cells and is a cancer diagnostic marker for brain tumors (PMID:7520111). ENO2 plays a role in the glycolysis-related energy pathway and might be involved in higher metabolic activity during the day than at night, at least in part.

Notable Publications

Author	Pubmed ID	Journal	Application
Minghao Yao	31355388	Biomater Sci	WB
Qiong Wang	36088396	Cell Biosci	WB
Liyuan Qian	34692477	Front Oncol	WB

Storage

Storage:

Store at -20°C. Stable for one year after shipment.

Storage Buffer:

PBS with 0.02% sodium azide and 50% glycerol, pH7.3

Aliquoting is unnecessary for -20°C storage

*** 20ul sizes contain 0.1% BSA

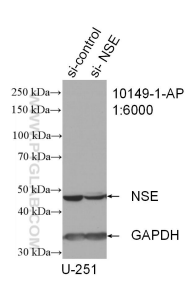
For technical support and original validation data for this product please contact:

T: 1 (888) 4PTGLAB (1-888-478-4522) (toll free in USA), or 1(312) 455-8498 (outside USA)

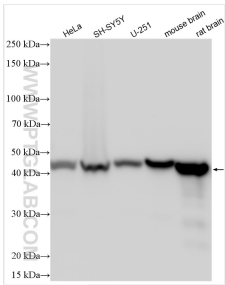
E: proteintech@ptglab.com
W: ptglab.com

This product is exclusively available under Proteintech Group brand and is not available to purchase from any other manufacturer.

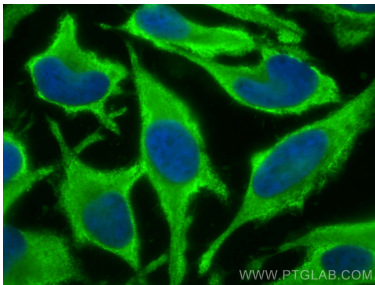
Selected Validation Data



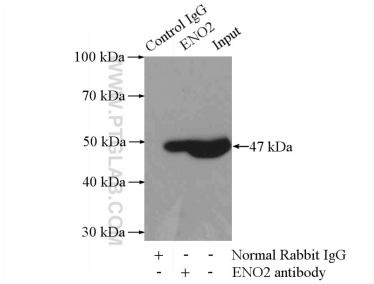
WB result of NSE antibody (10149-1-AP; 1:6000; incubated at room temperature for 1.5 hours) with sh-Control and sh-NSE transfected U-251 cells.



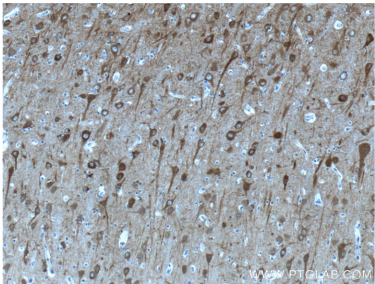
Various lysates were subjected to SDS PAGE followed by western blot with 10149-1-AP (NSE antibody) at dilution of 1:20000 incubated at room temperature for 1.5 hours.



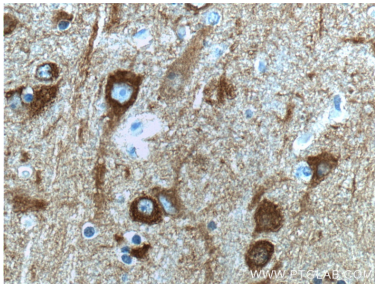
Immunofluorescent analysis of (-20°C Methanol) fixed HeLa cells using NSE antibody (10149-1-AP) at dilution of 1:400 and CoraLite®488-Conjugated AffiniPure Goat Anti-Rabbit IgG(H+L).



IP result of anti-NSE (IP:10149-1-AP, 4ug; Detection:10149-1-AP 1:300) with mouse brain tissue lysate 4000ug.



Immunohistochemical analysis of paraffin-embedded human brain tissue slide using 10149-1-AP (NSE antibody at dilution of 1:200 (under 10x lens).



Immunohistochemical analysis of paraffin-embedded human brain tissue slide using 10149-1-AP (NSE antibody at dilution of 1:200 (under 40x lens).