

For Research Use Only

# IGFBP3 Polyclonal antibody

Catalog Number: 10189-2-AP

Featured Product

35 Publications



## Basic Information

### Catalog Number:

10189-2-AP

### Size:

150ul, Concentration: 500 ug/ml by Nanodrop;

### Source:

Rabbit

### Isotype:

IgG

### Immunogen Catalog Number:

AG0242

### GenBank Accession Number:

BC000013

### GeneID (NCBI):

3486

### UNIPROT ID:

P17936

### Full Name:

insulin-like growth factor binding protein 3

### Calculated MW:

32 kDa

### Observed MW:

32-37 kDa

### Purification Method:

Antigen affinity purification

### Recommended Dilutions:

WB 1:200-1:1000

IHC 1:20-1:200

IF/ICC 1:200-1:800

## Applications

### Tested Applications:

WB, IHC, IF/ICC, ELISA

### Cited Applications:

WB, IHC, IF

### Species Specificity:

human, mouse

### Cited Species:

human, mouse, rat, chicken

**Note-IHC: suggested antigen retrieval with TE buffer pH 9.0; (\*) Alternatively, antigen retrieval may be performed with citrate buffer pH 6.0**

### Positive Controls:

WB: mouse colon tissue, HeLa cells, A2780 cells, HepG2 cells

IHC: human breast cancer tissue, human colon cancer tissue

IF/ICC: HeLa cells,

## Background Information

Insulin-like growth factor binding protein-3 (IGFBP-3) contains a 27 amino acid putative signal sequence followed by a mature protein of 264 amino acids with 18 cysteine residues clustered near the N- and C-terminus. Accordingly, expression of the cloned IGFBP-3 cDNA in mammalian tissue culture cells results in secretion of the protein into the culture medium. IGFBP-3 shares high homology (33% amino acid identity) including conservation of all 18 cysteine residues with a smaller human IGF-binding protein (BP-28) identified in amniotic fluid. IGFBP-3 has one or more glycosylation sites with a protein core of 30 kDa. Western blots revealed that the 39-45 kDa IGFBP-3 fragment is a glycoprotein. (PMID: 23403918, PMID: 24926947, PMID: 19887447)

## Notable Publications

Author	Pubmed ID	Journal	Application
Yuan Yin	34562520	Cancer Lett	WB
Xuanrong Chen	35003355	J Cancer	WB
Yulin Guo	29075359	Clin Epigenetics	WB

## Storage

### Storage:

Store at -20°C. Stable for one year after shipment.

### Storage Buffer:

PBS with 0.02% sodium azide and 50% glycerol

Aliquoting is unnecessary for -20°C storage

\*\*\* 20ul sizes contain 0.1% BSA

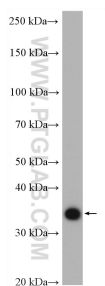
For technical support and original validation data for this product please contact:

T: 1 (888) 4PTGLAB (1-888-478-4522) (toll free in USA), or 1(312) 455-8498 (outside USA)

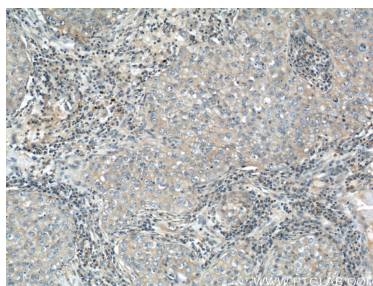
E: proteintech@ptglab.com  
W: ptglab.com

This product is exclusively available under Proteintech Group brand and is not available to purchase from any other manufacturer.

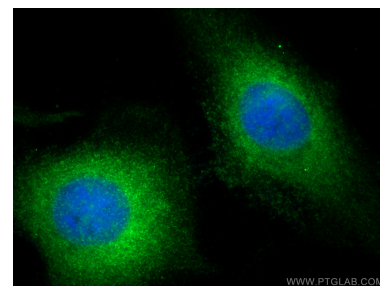
## Selected Validation Data



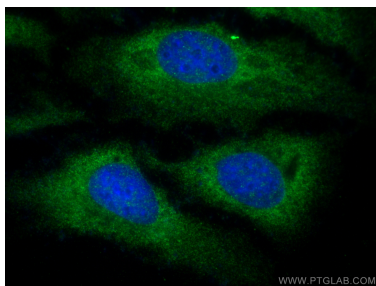
mouse colon tissue were subjected to SDS PAGE followed by western blot with 10189-2-AP (IGFBP3 antibody) at dilution of 1:300 incubated at room temperature for 1.5 hours.



Immunohistochemical analysis of paraffin-embedded human breast cancer using 10189-2-AP (IGFBP3 antibody) at dilution of 1:50 (under 10x lens).



Immunofluorescent analysis of (-20°C Ethanol) fixed HeLa cells using IGFBP3 antibody (10189-2-AP) at dilution of 1:400 and Multi-rAb CoraLite® Plus 488-Goat Anti-Rabbit Recombinant Secondary Antibody (H+L) (RGAR002).



Immunofluorescent analysis of (-20°C Ethanol) fixed HeLa cells using IGFBP3 antibody (10189-2-AP) at dilution of 1:400 and Multi-rAb CoraLite® Plus 488-Goat Anti-Rabbit Recombinant Secondary Antibody (H+L) (RGAR002).