

For Research Use Only

# WTAP Polyclonal antibody

Catalog Number: 10200-1-AP

Featured Product

65 Publications



## Basic Information

<b>Catalog Number:</b> 10200-1-AP	<b>GenBank Accession Number:</b> BC000383	<b>Purification Method:</b> Antigen affinity purification
<b>Size:</b> 150ul, Concentration: 500 ug/ml by Nanodrop;	<b>GeneID (NCBI):</b> 9589	<b>Recommended Dilutions:</b> WB: 1:2000-1:16000 IP: 0.5-4.0 ug for 1.0-3.0 mg of total protein lysate IHC: 1:500-1:2000
<b>Source:</b> Rabbit	<b>UNIPROT ID:</b> Q15007	
<b>Isotype:</b> IgG	<b>Full Name:</b> Wilms tumor 1 associated protein	
<b>Immunogen Catalog Number:</b> AG0259	<b>Calculated MW:</b> 45 kDa	
	<b>Observed MW:</b> 50-55 kDa	

## Applications

<b>Tested Applications:</b> WB, IHC, IP, ELISA	<b>Positive Controls:</b> WB : HeLa cells, Jurkat cells, HepG2 cells, MOLT-4 cells, L02 cells, K-562 cells IP : Jurkat cells, HEK-293 cells IHC : human intrahepatic cholangiocarcinoma tissue, human stomach tissue
<b>Cited Applications:</b> WB, IHC, IF, IP, CoIP, RIP	
<b>Species Specificity:</b> human, mouse, rat	
<b>Cited Species:</b> human, mouse, rat	

**Note-IHC: suggested antigen retrieval with TE buffer pH 9.0; (\*) Alternatively, antigen retrieval may be performed with citrate buffer pH 6.0**

## Background Information

WTAP, also named as KIAA0105 and hFL(2)D, is previously identified as a protein associated with Wilms' tumor-1 (WT-1) protein that is essential for the development of the genitourinary system. It is a Pre-mRNA-splicing regulator protein. It is a regulatory subunit of the WMM N6-methyltransferase complex which plays a role in the efficiency of mRNA splicing and processing and mRNA stability. It is required for accumulation of METTL3 and METTL14 to nuclear speckle. MW of WTAP is 50-55 kDa due to phosphorylation.

## Notable Publications

Author	Pubmed ID	Journal	Application
Yong Ge	34467630	EMBO Rep	WB,IP
Yuanpei Li	36289222	Nat Commun	WB,IHC,IF
Lingfang Wang	36288717	Cell Rep	WB

## Storage

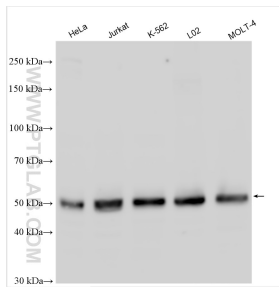
**Storage:**  
Store at -20°C. Stable for one year after shipment.  
**Storage Buffer:**  
PBS with 0.02% sodium azide and 50% glycerol, pH7.3  
Aliquoting is unnecessary for -20°C storage

\*\*\* 20ul sizes contain 0.1% BSA

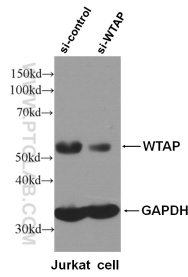
For technical support and original validation data for this product please contact:  
T: 1 (888) 4PTGLAB (1-888-478-4522) (toll free in USA), or 1(312) 455-8498 (outside USA)  
E: proteintech@ptglab.com  
W: ptglab.com

This product is exclusively available under Proteintech Group brand and is not available to purchase from any other manufacturer.

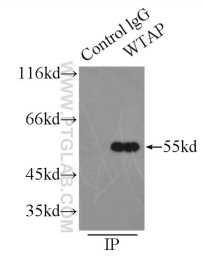
## Selected Validation Data



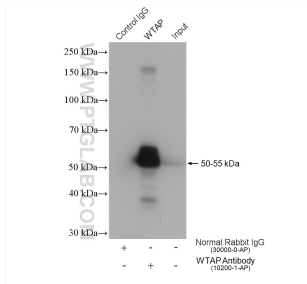
HeLa cells were subjected to SDS PAGE followed by western blot with 10200-1-AP (WTAP antibody) at dilution of 1:8000 incubated at room temperature for 1.5 hours.



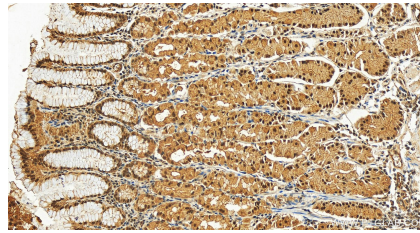
WB result of WTAP specific antibody (10200-1-AP, 1:6000) with si-control and si-WTAP transfected Jurkat cells.



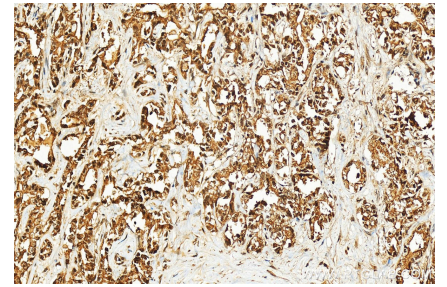
IP result of anti-WTAP (IP:10200-1-AP, 3ug; Detection:10200-1-AP 1:500) with HEK-293 cells lysate 2500ug.



IP result of anti-WTAP (IP:10200-1-AP, 4ug; Detection:10200-1-AP 1:8000) with Jurkat cells lysate 2280 ug.



Immunohistochemical analysis of paraffin-embedded human stomach tissue slide using 10200-1-AP (WTAP antibody) at dilution of 1:800 (under 20x lens). Heat mediated antigen retrieval with Tris-EDTA buffer (pH 9.0).



Immunohistochemical analysis of paraffin-embedded human intrahepatic cholangiocarcinoma tissue slide using 10200-1-AP (WTAP antibody) at dilution of 1:1000 (under 20x lens). Heat mediated antigen retrieval with Tris-EDTA buffer (pH 9.0).