

For Research Use Only

ARL4C Polyclonal antibody

Catalog Number: 10202-1-AP

Featured Product

12 Publications



Basic Information

Catalog Number:

10202-1-AP

Size:

150ul, Concentration: 300 ug/ml by Nanodrop and 200 ug/ml by Bradford method using BSA as the standard;

Source:

Rabbit

Isotype:

IgG

Immunogen Catalog Number:

AG0246

GenBank Accession Number:

BC001051

GeneID (NCBI):

10123

UNIPROT ID:

P56559

Full Name:

ADP-ribosylation factor-like 4C

Calculated MW:

21 kDa

Observed MW:

21-25 kDa

Purification Method:

Antigen affinity purification

Recommended Dilutions:

WB 1:500-1:1000

IP 0.5-4.0 ug for 1.0-3.0 mg of total protein lysate

IHC 1:50-1:500

IF/ICC 1:50-1:500

Applications

Tested Applications:

WB, IHC, IF/ICC, IP, ELISA

Cited Applications:

WB, IHC, IF

Species Specificity:

human

Cited Species:

human, mouse

Note-IHC: suggested antigen retrieval with TE buffer pH 9.0; (*) Alternatively, antigen retrieval may be performed with citrate buffer pH 6.0

Positive Controls:

WB : HUVEC cells, human brain tissue

IP : HUVEC cells,

IHC : human colon cancer tissue, human pancreas tissue

IF/ICC : HUVEC cells,

Notable Publications

Author	Pubmed ID	Journal	Application
Jisoo S Han	32873638	Proc Natl Acad Sci U S A	WB, IF
Shigehisa Kubota	33092599	World J Surg Oncol	IHC
Taotao Sheng	34635154	Genome Med	WB

Storage

Storage:

Store at -20°C. Stable for one year after shipment.

Storage Buffer:

PBS with 0.02% sodium azide and 50% glycerol pH 7.3.

Aliquoting is unnecessary for -20°C storage

*** 20ul sizes contain 0.1% BSA

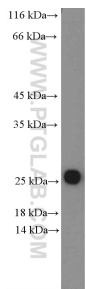
For technical support and original validation data for this product please contact:

T: 1 (888) 4PTGLAB (1-888-478-4522) (toll free in USA), or 1(312) 455-8498 (outside USA)

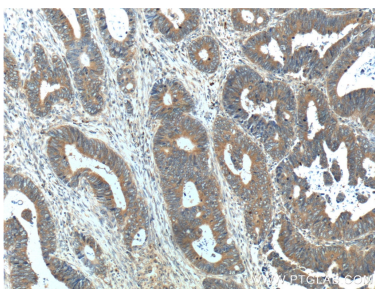
E: proteintech@ptglab.com
W: ptglab.com

This product is exclusively available under Proteintech Group brand and is not available to purchase from any other manufacturer.

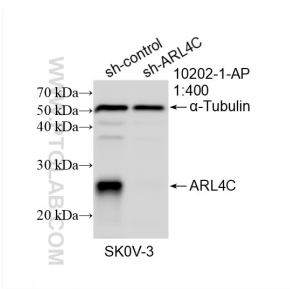
Selected Validation Data



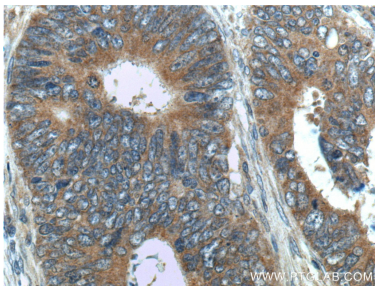
HUVEC cells were subjected to SDS PAGE followed by western blot with 10202-1-AP (ARL4C Antibody) at dilution of 1:600 incubated at room temperature for 1.5 hours.



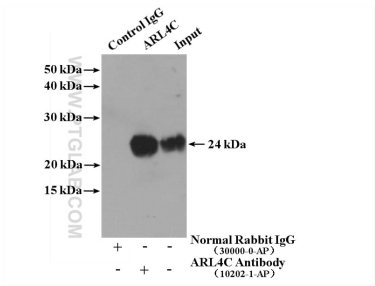
Immunohistochemical analysis of paraffin-embedded human colon cancer tissue slide using 10202-1-AP (ARL4C Antibody) at dilution of 1:200 (under 10x lens).



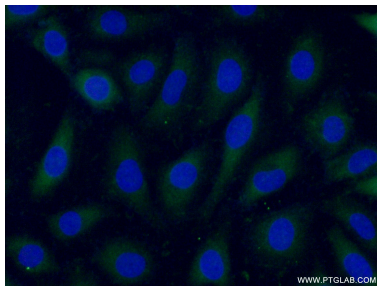
WB result of ARL4C antibody (10202-1-AP; 1:400; incubated at room temperature for 1.5 hours) with sh-Control and sh-ARL4C transfected SKOV-3 cells.



Immunohistochemical analysis of paraffin-embedded human colon cancer tissue slide using 10202-1-AP (ARL4C Antibody) at dilution of 1:200 (under 40x lens).



IP result of anti-ARL4C (IP:10202-1-AP, 4ug; Detection:10202-1-AP 1:500) with HUVEC cells lysate 3600 ug.



Immunofluorescent analysis of (-20°C Ethanol) fixed HUVEC cells using 10202-1-AP (ARL4C antibody) at dilution of 1:50 and Alexa Fluor 488-conjugated AffiniPure Goat Anti-Rabbit IgG(H+L).