

CIRBP

Polyclonal ANTIBODY

Catalog Number: 10209-2-AP

Featured Product

32 Publications

Basic Information

Catalog Number:
10209-2-AP

Size:
44 µg/150 µl

Source:
Rabbit

Isotype:
IgG

Purification Method:
Antigen affinity purification

Immunogen Catalog Number:
AG0280

GenBank Accession Number:
BC000403

GeneID (NCBI):
1153

Full Name:
cold inducible RNA binding protein

Calculated MW:
172aa, 19 kDa

Observed MW:
19 kDa

Recommended Dilutions:

WB 1:500-1:2000

IP 0.5-4.0 ug for IP and 1:500-1:1000 for WB

IHC 1:50-1:200

IF 1:10-1:100

Applications

Tested Applications:
ELISA, IHC, IP, IF, WB

Cited Applications:
IF, IHC, WB

Species Specificity:
human, mouse, rat

Cited Species:
human, mouse, rat

Positive Controls:

WB : HepG2 cells; A549 cells

IP : HepG2 cells;

IHC : human breast cancer tissue; human breast cancer tissue, human placenta tissue

IF : HepG2 cells;

Background Information

CIRBP, also named as A18HNRNP and CIRP, is a cold-inducible mRNA binding protein that plays a protective role in the genotoxic stress response by stabilizing transcripts of genes involved in cell survival [PMID: 19158277]. CIRBP is also involved in cap-independent translation upon moderate cold-shock. It acts as a translational activator. CIRBP is a suppressive rather stimulatory effect on proliferation [PMID: 19777567]. CIRBP can translocate from nucleus to cytoplasm under stresses such as UV irradiation or heat shock. Suppression of CIRBP increased the apoptotic cell population of neural stem cells at moderate low temperature [PMID: 20735994]. This antibody (Catalog# 10209-2-AP) is a rabbit polyclonal antibody raised against the full-length CIRBP of human origin.

Notable Publications

Author	Pubmed ID	Journal	Application
John Rp Knight	25353634	Biochem J	WB
Lingxiu Chen	27423012	Int Immunopharmacol	WB, IHC
Xa Zhiping Z	24094970	J Pediatr Surg	WB

Storage

Storage:

Store at -20°C. Stable for one year after shipment.

Storage Buffer:

PBS with 0.1% sodium azide and 50% glycerol pH 7.3.

Aliquoting is unnecessary for -20°C storage

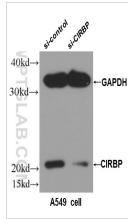
For technical support and original validation data for this product please contact:

T: 1 (888) 4PTGLAB (1-888-478-4522) (toll free in USA), or 1(312) 455-8498 (outside USA)

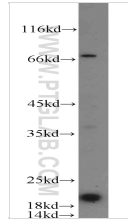
E: proteintech@ptglab.com
W: ptglab.com

This product is exclusively available under Proteintech Group brand and is not available to purchase from any other manufacturer.

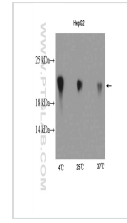
Selected Validation Data



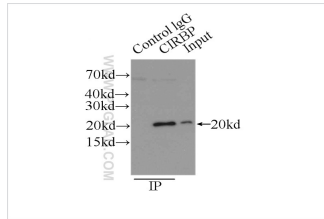
WB result of CIRBP antibody (10209-2-AP, 1:500) with si-control and si-CIRBP transfected A549 cell.



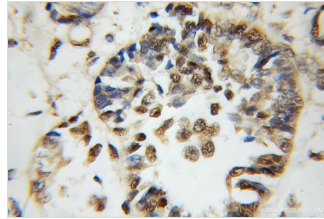
HepG2 cells were subjected to SDS PAGE followed by western blot with 10209-2-AP(CIRBP antibody) at dilution of 1:1000 incubated at room temperature for 1.5 hours



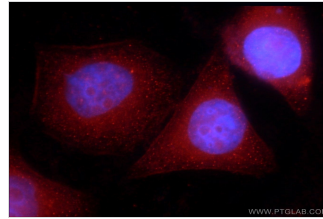
HepG2 cells were subjected to SDS PAGE followed by western blot with 10209-2-AP(CIRBP Antibody) at dilution of 1:600 incubated at room temperature for 1.5 hours



IP Result of anti-CIRBP (IP: 10209-2-AP, 3ug; Detection: 10209-2-AP 1:500) with HepG2 cells lysate 6000ug.



Immunohistochemical of paraffin-embedded human breast cancer using 10209-2-AP(CIRBP antibody) at dilution of 1:100 (under 10x lens)



Immunofluorescent analysis of HepG2 cells using 10209-2-AP(CIRBP antibody) at dilution of 1:25 and Rhodamine-Goat anti-Rabbit IgG