

For Research Use Only

ABCF2 Polyclonal antibody

Catalog Number: 10226-1-AP

2 Publications



Basic Information

Catalog Number:

10226-1-AP

Size:

150ul, Concentration: 400 ug/ml by Nanodrop and 173 ug/ml by Bradford method using BSA as the standard;

Source:

Rabbit

Isotype:

IgG

Immunogen Catalog Number:

AG0310

GenBank Accession Number:

BC001661

GeneID (NCBI):

10061

UNIPROT ID:

Q9UG63

Full Name:

ATP-binding cassette, sub-family F (GCN20), member 2

Calculated MW:

71 kDa

Observed MW:

71 kDa

Purification Method:

Antigen affinity purification

Recommended Dilutions:

WB: 1:500-1:3000

IP: 0.5-4.0 ug for 1.0-3.0 mg of total protein lysate

IHC: 1:50-1:500

IF/ICC: 1:200-1:800

Applications

Tested Applications:

WB, IHC, IF/ICC, IP, ELISA

Cited Applications:

WB, IHC

Species Specificity:

human, mouse

Cited Species:

human

Positive Controls:

WB: NIH/3T3 cells, HEK-293 cells

IP: HeLa cells,

IHC: human colon cancer tissue,

IF/ICC: HepG2 cells,

Note-IHC: suggested antigen retrieval with TE buffer pH 9.0; (*) Alternatively, antigen retrieval may be performed with citrate buffer pH 6.0

Background Information

ABCF2 (ABC28, M-ABC1, HUSSY-18, EST133090, DKFZp586K1823) is a member of the superfamily of ATP-binding cassette (ABC) transporters. ABC proteins are composed of transmembrane domains (TMDs), and nucleotide binding domains (NBDs, or ATP-binding cassettes, ABSs). Based on their sequence similarity scores, the members of the human ABC protein family can be grouped into eight subfamilies, including the MDR/TAP, the ALD, the MRP/CFTR, the ABC1, the White, the RNaseL inhibitor, the ANSA, and the GCN20 subfamilies. ABCF2 is a member of the GCN20 subfamily. ABC proteins transport various molecules across extra- and intracellular membranes.

Notable Publications

Author	Pubmed ID	Journal	Application
Erika C Urdaneta	30824702	Nat Commun	WB
Emilie Dujardin	37847154	Elife	IHC

Storage

Storage:

Store at -20°C. Stable for one year after shipment.

Storage Buffer:

PBS with 0.02% sodium azide and 50% glycerol, pH7.3

Aliquoting is unnecessary for -20°C storage

*** 20ul sizes contain 0.1% BSA

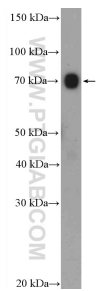
For technical support and original validation data for this product please contact:

T: 1 (888) 4PTGLAB (1-888-478-4522) (toll free in USA), or 1(312) 455-8498 (outside USA)

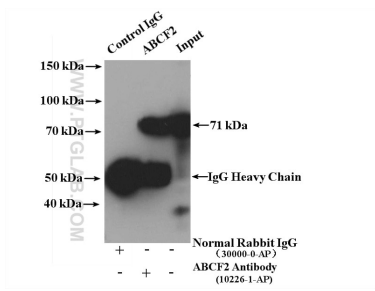
E: proteintech@ptglab.com
W: ptglab.com

This product is exclusively available under Proteintech Group brand and is not available to purchase from any other manufacturer.

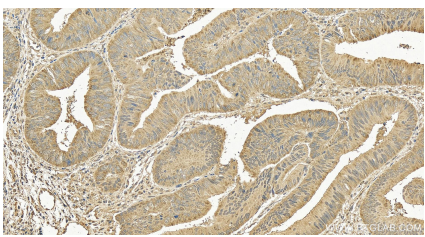
Selected Validation Data



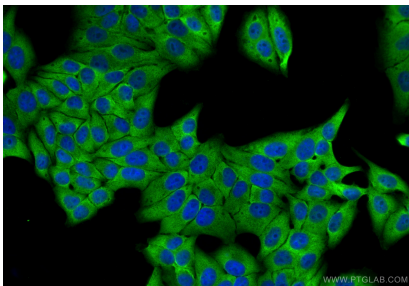
NIH/3T3 cells were subjected to SDS PAGE followed by western blot with 10226-1-AP (ABCF2 Antibody) at dilution of 1:1500 incubated at room temperature for 1.5 hours.



IP result of anti-ABCF2 (IP:10226-1-AP, 4ug; Detection:10226-1-AP 1:300) with HeLa cells lysate 3000 ug.



Immunohistochemical analysis of paraffin-embedded human colon cancer tissue slide using 10226-1-AP (ABCF2 antibody) at dilution of 1:200 (under 20x lens). Heat mediated antigen retrieval with Tris-EDTA buffer (pH 9.0).



Immunofluorescent analysis of (4% PFA) fixed HepG2 cells using ABCF2 antibody (10226-1-AP) at dilution of 1:400 and Coralite® 488-Conjugated Goat Anti-Rabbit IgG(H+L) (SA00013-2).