

For Research Use Only

SAE1 Polyclonal antibody

Catalog Number: 10229-1-AP

5 Publications



Basic Information

Catalog Number: 10229-1-AP	GenBank Accession Number: BC000344	Purification Method: Antigen affinity purification
Size: 150ul , Concentration: 240 ug/ml by Nanodrop;	GeneID (NCBI): 10055	Recommended Dilutions: WB 1:500-1:5000
Source: Rabbit	UNIPROT ID: Q9UBE0	IHC 1:50-1:500
Isotype: IgG	Full Name: SUMO1 activating enzyme subunit 1	IF/ICC 1:400-1:1600
Immunogen Catalog Number: AG0275	Calculated MW: 38 kDa	
	Observed MW: 38 kDa	

Applications

Tested Applications: WB, IHC, IF/ICC, ELISA	Positive Controls:
Cited Applications: WB, IHC	WB : A549 cells, A431 cells, HEK-293 cells, HeLa cells
Species Specificity: human, mouse, rat	IHC : human colon cancer tissue, human skin cancer tissue
Cited Species: human, mouse	IF/ICC : HeLa cells,

Note-IHC: suggested antigen retrieval with TE buffer pH 9.0; (*) Alternatively, antigen retrieval may be performed with citrate buffer pH 6.0

Background Information

SAE1(SUMO-activating enzyme subunit 1) is also named as AOS1, SUA1, UBLE1A and belongs to the ubiquitin-activating E1 family. SAE1 has a calculated molecular mass of 38 kD. It had an apparent molecular mass of 40 kD by SDS-PAGE. SAE1 and UBA2 form a heterodimer that functions as a SUMO-activating enzyme for the sumoylation of proteins(PMID:9920803). Western blot analysis of synchronized HeLa cells detects increased AOS1 expression as cells progressed through S phase, followed by a substantial decrease in G2 phase. Immunofluorescence analysis shows AOS1 and UBA2 distributed throughout nuclei, but they are excluded from nucleoli.(PMID:11481243).

Notable Publications

Author	Pubmed ID	Journal	Application
Lingjie Yan	36414671	Nat Commun	WB
Dong Chen	22342750	Curr Biol	WB
Yang Liu	35859792	Open Med (Wars)	IHC

Storage

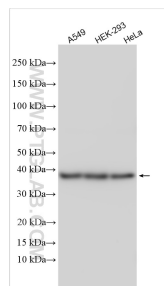
Storage:
Store at -20°C. Stable for one year after shipment.
Storage Buffer:
PBS with 0.02% sodium azide and 50% glycerol pH 7.3.
Aliquoting is unnecessary for -20°C storage

*** 20ul sizes contain 0.1% BSA

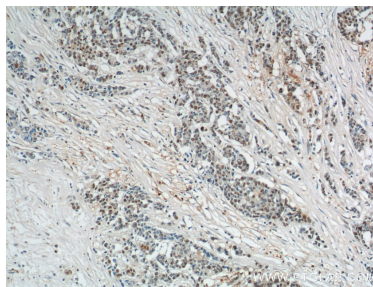
For technical support and original validation data for this product please contact:
T: 1 (888) 4PTGLAB (1-888-478-4522) (toll free in USA), or 1(312) 455-8498 (outside USA)
E: proteintech@ptglab.com
W: ptglab.com

This product is exclusively available under Proteintech Group brand and is not available to purchase from any other manufacturer.

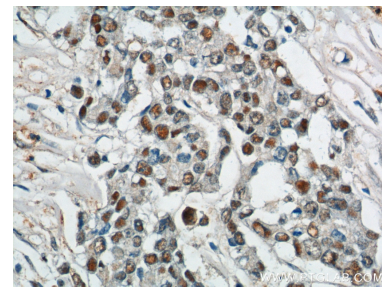
Selected Validation Data



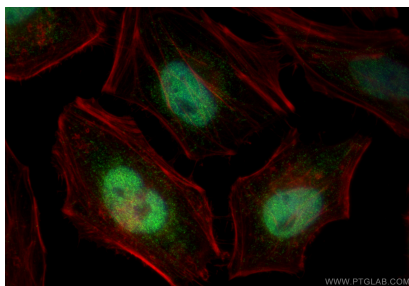
Various lysates were subjected to SDS PAGE followed by western blot with 10229-1-AP (SAE1 antibody) at dilution of 1:4000 incubated at room temperature for 1.5 hours.



Immunohistochemical analysis of paraffin-embedded human colon cancer tissue slide using 10229-1-AP (SAE1 Antibody) at dilution of 1:200 (under 10x lens).



Immunohistochemical analysis of paraffin-embedded human colon cancer tissue slide using 10229-1-AP (SAE1 Antibody) at dilution of 1:200 (under 40x lens).



Immunofluorescent analysis of (4% PFA) fixed HeLa cells using SAE1 antibody (10229-1-AP) at dilution of 1:800 and CoraLite® 488-Conjugated Goat Anti-Rabbit IgG(H+L) (SA00013-2), CL594-phalloidin (red).