

For Research Use Only

# ARL2 Polyclonal antibody

Catalog Number: 10232-1-AP

Featured Product

6 Publications



## Basic Information

### Catalog Number:

10232-1-AP

### Size:

150ul, Concentration: 270 ug/ml by Nanodrop and 340 ug/ml by Bradford method using BSA as the standard;

### Source:

Rabbit

### Isotype:

IgG

### Immunogen Catalog Number:

AG0334

### GenBank Accession Number:

BC002530

### GeneID (NCBI):

402

### UNIPROT ID:

P36404

### Full Name:

ADP-ribosylation factor-like 2

### Calculated MW:

21 kDa

### Observed MW:

21-25 kDa

### Purification Method:

Antigen affinity purification

### Recommended Dilutions:

WB 1:500-1:2000

IHC 1:20-1:200

## Applications

### Tested Applications:

WB, IHC, ELISA

### Cited Applications:

WB, IF

### Species Specificity:

human, mouse, rat

### Cited Species:

human, mouse, rat

**Note-IHC: suggested antigen retrieval with TE buffer pH 9.0; (\*) Alternatively, antigen retrieval may be performed with citrate buffer pH 6.0**

### Positive Controls:

**WB** : mouse liver tissue, HeLa cells, mouse lung tissue, mouse spleen tissue, Y79 cells

**IHC** : human ovary tumor tissue,

## Background Information

The ADP-ribosylation factor (ARF) genes are small GTP-binding proteins of the RAS superfamily. ADP-ribosylation factor-like 2 (ARL2) is a member of a functionally distinct group of ARF-like genes. ARL2 interacts with the tubulin-specific chaperone protein known as cofactor D. ARL2 downregulates the tubulin GAP activity of cofactor C, D, and E, and inhibits the binding of D to native tubulin.

## Notable Publications

Author	Pubmed ID	Journal	Application
Chun-Xiang Zhou	32985032	J Cell Biochem	WB, IF
Hemangi Patil	25187515	J Biol Chem	WB
Chun-Xiang Zhou	28324667	Cell Cycle	WB

## Storage

### Storage:

Store at -20°C. Stable for one year after shipment.

### Storage Buffer:

PBS with 0.02% sodium azide and 50% glycerol pH 7.3.

Aliquoting is unnecessary for -20°C storage

\*\*\* 20ul sizes contain 0.1% BSA

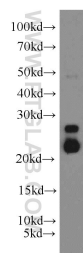
For technical support and original validation data for this product please contact:

T: 1 (888) 4PTGLAB (1-888-478-4522) (toll free in USA), or 1(312) 455-8498 (outside USA)

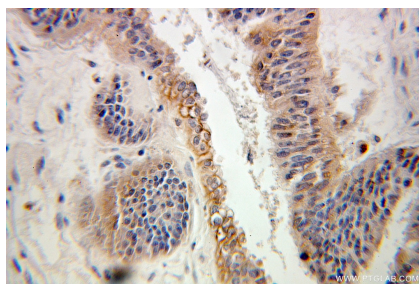
E: [proteintech@ptglab.com](mailto:proteintech@ptglab.com)  
W: [ptglab.com](http://ptglab.com)

This product is exclusively available under Proteintech Group brand and is not available to purchase from any other manufacturer.

## Selected Validation Data



mouse liver tissue were subjected to SDS PAGE followed by western blot with 10232-1-AP (ARL2 antibody) at dilution of 1:500 incubated at room temperature for 1.5 hours.



Immunohistochemical analysis of paraffin-embedded human ovary tumor using 10232-1-AP (ARL2 antibody) at dilution of 1:100 (under 25x lens).