

For Research Use Only

Transgelin 2 Polyclonal antibody

Catalog Number: 10234-2-AP

Featured Product

21 Publications



Basic Information

Catalog Number:

10234-2-AP

Size:

150ul, Concentration: 350 ug/ml by Nanodrop and 213 ug/ml by Bradford method using BSA as the standard;

Source:

Rabbit

Isotype:

IgG

Immunogen Catalog Number:

AG0337

GenBank Accession Number:

BC002616

GeneID (NCBI):

8407

UNIPROT ID:

P37802

Full Name:

transgelin 2

Calculated MW:

199 aa, 22 kDa

Observed MW:

22 kDa

Purification Method:

Antigen affinity purification

Recommended Dilutions:

WB 1:1000-1:4000

IHC 1:50-1:500

IF/ICC 1:200-1:800

Applications

Tested Applications:

WB, IHC, IF/ICC, ELISA

Cited Applications:

WB, IHC, IF, IP, ELISA

Species Specificity:

human

Cited Species:

human, mouse

Note-IHC: suggested antigen retrieval with TE buffer pH 9.0; (*) Alternatively, antigen retrieval may be performed with citrate buffer pH 6.0

Positive Controls:

WB : HepG2 cells, HEK-293 cells

IHC : human skin cancer tissue, human colon cancer tissue, human intrahepatic cholangiocarcinoma tissue, human ovary cancer tissue, human urothelial carcinoma tissue

IF/ICC : HepG2 cells,

Background Information

The transgelin family is a group of proteins that belong to 22 kDa actin-related corpnin superfamily. Of all three isoforms, transgelin 1 is the best characterized. Transgelin 1, also known as SM22 alpha, is a specific marker for differentiated smooth muscle cells. Transgelin 2, also known as SM22 beta, is expressed by both smooth muscle and non-smooth muscle cells in a temporally and spatially regulated pattern. Transgelin 3, also known as NP25, is only found in highly differentiated neuronal cells. This antibody was generated against full length transgelin 2 protein. It may cross react with other two transgelins based on the sequence similarity.

Notable Publications

Author	Pubmed ID	Journal	Application
Rong Ding	34553339	J Physiol Biochem	WB, IP, IHC
In-Gyu Kim	30191639	Cancer Sci	WB, IHC, IF
Shaojian Lin	33123464	Front Oncol	WB

Storage

Storage:

Store at -20°C. Stable for one year after shipment.

Storage Buffer:

PBS with 0.02% sodium azide and 50% glycerol pH 7.3.

Aliquoting is unnecessary for -20°C storage

*** 20ul sizes contain 0.1% BSA

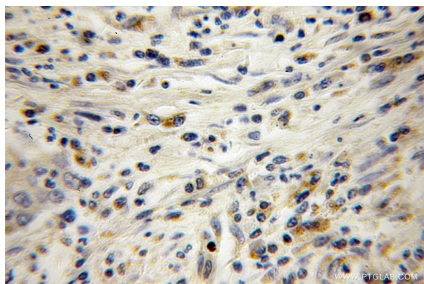
For technical support and original validation data for this product please contact:

T: 1 (888) 4PTGLAB (1-888-478-4522) (toll free in USA), or 1(312) 455-8498 (outside USA)

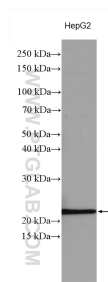
E: proteintech@ptglab.com
W: ptglab.com

This product is exclusively available under Proteintech Group brand and is not available to purchase from any other manufacturer.

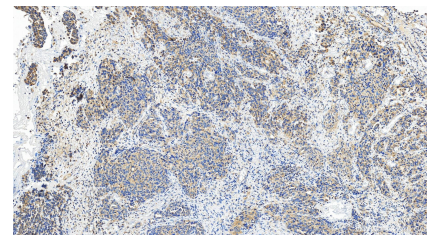
Selected Validation Data



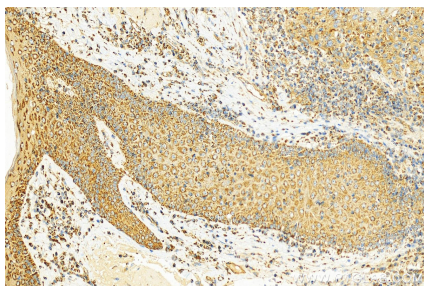
Immunohistochemical analysis of paraffin-embedded human colon cancer using 10234-2-AP (Transgelin 2 antibody) at dilution of 1:100 (under 10x lens).



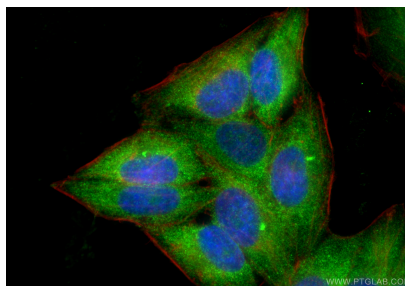
Various lysates were subjected to SDS PAGE followed by western blot with 10234-2-AP (Transgelin 2 antibody) at dilution of 1:2000 incubated at room temperature for 1.5 hours.



Immunohistochemical analysis of paraffin-embedded human ovary cancer tissue slide using 10234-2-AP (Transgelin 2 antibody) at dilution of 1:200 (under 20x lens). Heat mediated antigen retrieval with Tris-EDTA buffer (pH 9.0).



Immunohistochemical analysis of paraffin-embedded human skin cancer tissue slide using 10234-2-AP (Transgelin 2 antibody) at dilution of 1:200 (under 20x lens). Heat mediated antigen retrieval with Tris-EDTA buffer (pH 9.0).



Immunofluorescent analysis of (4% PFA) fixed HepG2 cells using Transgelin 2 antibody (10234-2-AP) at dilution of 1:400 and CoraLite® 488-Conjugated Goat Anti-Rabbit IgG(H+L) (SA00013-2), CL594-phalloidin (red).