

For Research Use Only

PLEKHA1 Polyclonal antibody

Catalog Number: 10238-1-AP

3 Publications



Basic Information

Catalog Number:

10238-1-AP

Size:

150ul, Concentration: 400 ug/ml by Nanodrop and 233 ug/ml by Bradford method using BSA as the standard;

Source:

Rabbit

Isotype:

IgG

Immunogen Catalog Number:

AG0318

GenBank Accession Number:

BC001136

GeneID (NCBI):

59338

UNIPROT ID:

Q9HB21

Full Name:

pleckstrin homology domain containing, family A (phosphoinositide binding specific) member 1

Calculated MW:

46 kDa

Observed MW:

46 kDa

Purification Method:

Antigen affinity purification

Recommended Dilutions:

WB 1:500-1:1000

IHC 1:50-1:500

IF/ICC 1:50-1:500

Applications

Tested Applications:

WB, IHC, IF/ICC, ELISA

Cited Applications:

WB

Species Specificity:

human

Cited Species:

human, mouse

Positive Controls:

WB : human placenta tissue, Jurkat cells

IHC : human colon tissue, human pancreas cancer tissue

IF/ICC : HeLa cells,

Note-IHC: suggested antigen retrieval with TE buffer pH 9.0; (*) Alternatively, antigen retrieval may be performed with citrate buffer pH 6.0

Background Information

Pleckstrin homology (PH) domain is commonly found in eukaryotic signaling proteins and possesses multiple functions including the abilities to bind inositol phosphates and various proteins. The tandem PH domain containing protein-1 (TAPP1) or PH domain containing-family A (phosphoinositide binding specific) member 1 (PLEKHA1), interacts strongly and specifically with phosphatidylinositol 3,4-trisphosphate [PtdIns(3,4)P(2)], which is one of the immediate breakdown products of PtdIns(3,4,5) P (3) and functions as a signalling molecule in insulin- and growth-factor-stimulated pathways. TAPP1 is also associated with the protein-tyrosine-phosphatase-like protein-1 (PTPL1 also known as FAP-1) and maintains PTPL1 in cytoplasm. By binding to PtdIns(3,4) P (2) and PTPL1, TAPP1 may regulate the membrane localization of PTPL1."

Notable Publications

Author	Pubmed ID	Journal	Application
Michelle E LeBlanc	28330905	J Exp Med	WB
Xin Rong	30904565	Exp Eye Res	
Manman Li	39213495	J Proteome Res	WB

Storage

Storage:

Store at -20°C. Stable for one year after shipment.

Storage Buffer:

PBS with 0.02% sodium azide and 50% glycerol pH 7.3.

Aliquoting is unnecessary for -20°C storage

*** 20ul sizes contain 0.1% BSA

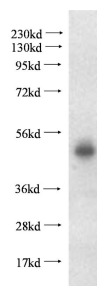
For technical support and original validation data for this product please contact:

T: 1 (888) 4PTGLAB (1-888-478-4522) (toll free in USA), or 1(312) 455-8498 (outside USA)

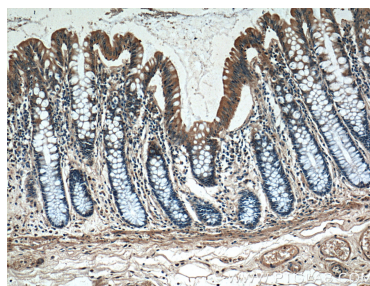
E: proteintech@ptglab.com
W: ptglab.com

This product is exclusively available under Proteintech Group brand and is not available to purchase from any other manufacturer.

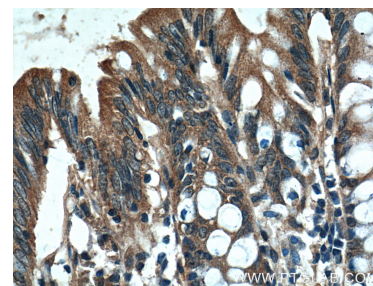
Selected Validation Data



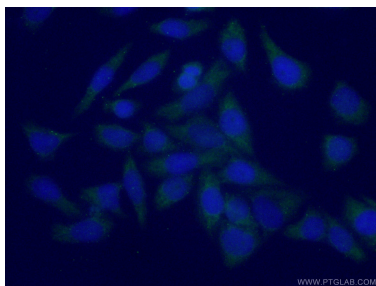
human placenta tissue were subjected to SDS PAGE followed by western blot with 10238-1-AP (PLEKHA1 antibody) at dilution of 1:500 incubated at room temperature for 1.5 hours.



Immunohistochemical analysis of paraffin-embedded human colon tissue slide using 10238-1-AP (PLEKHA1 Antibody) at dilution of 1:200 (under 10x lens).



Immunohistochemical analysis of paraffin-embedded human colon tissue slide using 10238-1-AP (PLEKHA1 Antibody) at dilution of 1:200 (under 40x lens).



Immunofluorescent analysis of (-20°C Ethanol) fixed HeLa cells using 10238-1-AP (PLEKHA1 antibody) at dilution of 1:50 and Alexa Fluor 488-conjugated Goat Anti-Rabbit IgG(H+L).