

For Research Use Only

CYC1 Polyclonal antibody

Catalog Number: 10242-1-AP

Featured Product

35 Publications



Basic Information

Catalog Number:

10242-1-AP

Size:

150ul, Concentration: 400 ug/ml by Nanodrop and 173 ug/ml by Bradford method using BSA as the standard;

Source:

Rabbit

Isotype:

IgG

Immunogen Catalog Number:

AG0291

GenBank Accession Number:

BC001006

GeneID (NCBI):

1537

UNIPROT ID:

P08574

Full Name:

cytochrome c-1

Calculated MW:

35 kDa

Observed MW:

35 kDa

Purification Method:

Antigen affinity purification

Recommended Dilutions:

WB 1:500-1:2000

IHC 1:50-1:500

Applications

Tested Applications:

WB, IHC, ELISA

Cited Applications:

WB, IHC

Species Specificity:

human, mouse

Cited Species:

human, mouse, rat, pig, monkey

Note-IHC: suggested antigen retrieval with TE buffer pH 9.0; (*) Alternatively, antigen retrieval may be performed with citrate buffer pH 6.0

Positive Controls:

WB : human brain tissue,

IHC : human liver cancer tissue, human breast cancer tissue

Background Information

CYC1, also named as Cytochrome c-1, belongs to the cytochrome c family. Cytochrome c1 is one respiratory subunit of the 11 subunits of the cytochrome bc1 complex of the mitochondrial electron-transfer chain. It mediates the transfer of an electron from Rieske iron-sulfur protein to cytochrome c (PMID:3036122). CYC1 mediates apoptosis. In this pathway, a variety of apoptotic stimuli cause CYC1 release from mitochondria, which in turn induces a series of biochemical reactions that result in caspase activation and subsequent cell death (PMID:15189137). While CYC1 release and DNA fragmentation are unaffected by the noncleavable p75 mutant, mitochondrial morphology of dying cells is maintained, and loss of plasma membrane integrity is delayed (PMID:15186778). The protein migrated as a 35 kD band in SDS page.

Notable Publications

Author	Pubmed ID	Journal	Application
Yan Gao	36067878	Arch Biochem Biophys	WB
Benben Song	25345801	J Proteome Res	WB
Hong-Wei Wang	31629238	Chemosphere	WB

Storage

Storage:

Store at -20°C. Stable for one year after shipment.

Storage Buffer:

PBS with 0.02% sodium azide and 50% glycerol pH 7.3.

Aliquoting is unnecessary for -20°C storage

*** 20ul sizes contain 0.1% BSA

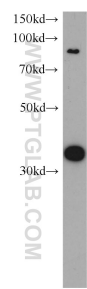
For technical support and original validation data for this product please contact:

T: 1 (888) 4PTGLAB (1-888-478-4522) (toll free in USA), or 1(312) 455-8498 (outside USA)

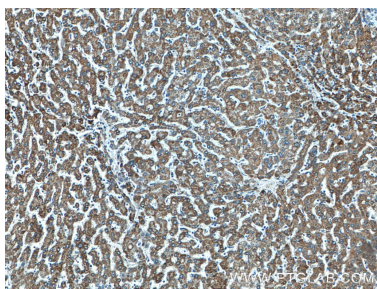
E: proteintech@ptglab.com
W: ptglab.com

This product is exclusively available under Proteintech Group brand and is not available to purchase from any other manufacturer.

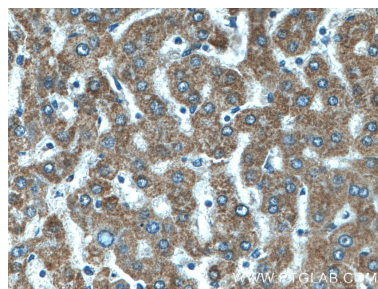
Selected Validation Data



human brain tissue were subjected to SDS PAGE followed by western blot with 10242-1-AP (CYC1 antibody) at dilution of 1:300 incubated at room temperature for 1.5 hours.



Immunohistochemical analysis of paraffin-embedded human liver cancer tissue slide using 10242-1-AP (CYC1 antibody) at dilution of 1:200 (under 10x lens).



Immunohistochemical analysis of paraffin-embedded human liver cancer tissue slide using 10242-1-AP (CYC1 antibody) at dilution of 1:200 (under 40x lens).