

For Research Use Only

Cdc20 Polyclonal antibody

Catalog Number: 10252-1-AP

Featured Product

43 Publications



Basic Information

Catalog Number:

10252-1-AP

Size:

150ul, Concentration: 650 ug/ml by Nanodrop;

Source:

Rabbit

Isotype:

IgG

Immunogen Catalog Number:

AG0295

GenBank Accession Number:

BC001088

GeneID (NCBI):

991

UNIPROT ID:

Q12834

Full Name:

cell division cycle 20 homolog (S. cerevisiae)

Calculated MW:

55 kDa

Observed MW:

55 kDa

Purification Method:

Antigen affinity purification

Recommended Dilutions:

WB 1:2000-1:14000

IP 0.5-4.0 ug for 1.0-3.0 mg of total protein lysate

IHC 1:50-1:500

IF/ICC 1:200-1:800

Applications

Tested Applications:

WB, IHC, IF/ICC, IP, ELISA

Cited Applications:

WB, IHC, IF, IP, CoIP

Species Specificity:

human

Cited Species:

human, mouse, canine

Note-IHC: suggested antigen retrieval with TE buffer pH 9.0; (*) Alternatively, antigen retrieval may be performed with citrate buffer pH 6.0

Positive Controls:

WB : HEK-293 cells, HeLa cells, PC-3 cells, HL-60 cells, Jurkat cells, HepG2 cells

IP : Jurkat cells,

IHC : human breast cancer tissue, human colon cancer tissue, human urothelial carcinoma tissue

IF/ICC : HeLa cells,

Background Information

Cdc20 (Cell-division cycle protein 20 homologue) is also named as p55CDC and belongs to the WD repeat CDC20/Fizzy family. Cdc20 has important functions in chromosome segregation and mitotic exit. Cdc20 is the target of the spindle assembly checkpoint (SAC) and a key cofactor of the anaphase-promoting complex or cyclosome (APC/CDC20) E3 ubiquitin ligase, thus regulating APC/C ubiquitin activity on specific substrates for their subsequent degradation by the proteasome (PMID: 28202332). The 55-kDa band corresponded to the size of Cdc20 (PMID: 22566641).

Notable Publications

Author	Pubmed ID	Journal	Application
Yuanyuan Bai	36213833	J Oncol	WB
Xie Mengyan	36176446	Front Pharmacol	WB,IHC
Yang Gao	32932732	Int J Mol Sci	WB

Storage

Storage:

Store at -20°C. Stable for one year after shipment.

Storage Buffer:

PBS with 0.02% sodium azide and 50% glycerol

Aliquoting is unnecessary for -20°C storage

*** 20ul sizes contain 0.1% BSA

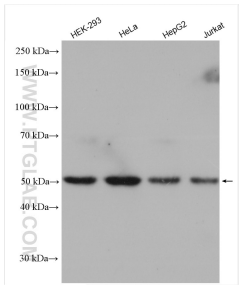
For technical support and original validation data for this product please contact:

T: 1 (888) 4PTGLAB (1-888-478-4522) (toll free in USA), or 1(312) 455-8498 (outside USA)

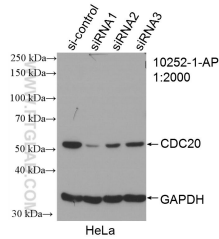
E: proteintech@ptglab.com
W: ptglab.com

This product is exclusively available under Proteintech Group brand and is not available to purchase from any other manufacturer.

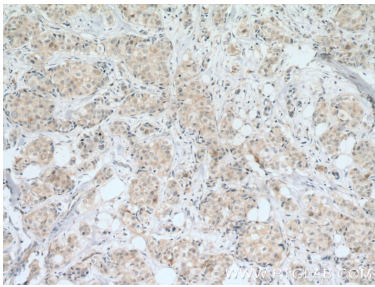
Selected Validation Data



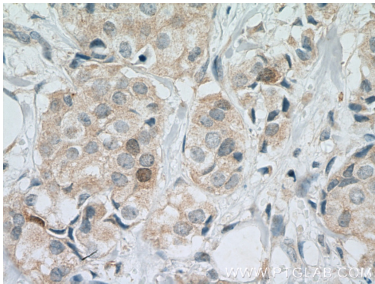
Various lysates were subjected to SDS PAGE followed by western blot with 10252-1-AP (Cdc20 antibody) at dilution of 1:7000 incubated at room temperature for 1.5 hours.



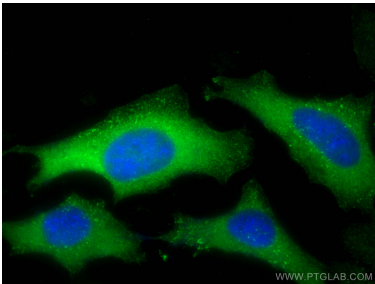
WB result of Cdc20 antibody (10252-1-AP; 1:2000; incubated at room temperature for 1.5 hours) with sh-Control and sh-Cdc20 transfected HeLa cells.



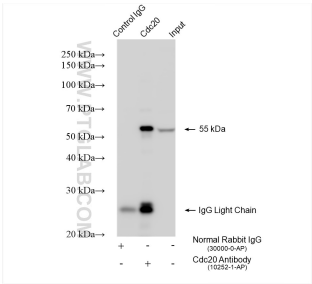
Immunohistochemical analysis of paraffin-embedded human breast cancer tissue slide using 10252-1-AP (CDC20 Antibody) at dilution of 1:200 (under 10x lens). Heat mediated antigen retrieval with Tris-EDTA buffer (pH 9.0).



Immunohistochemical analysis of paraffin-embedded human breast cancer tissue slide using 10252-1-AP (CDC20 Antibody) at dilution of 1:200 (under 40x lens). Heat mediated antigen retrieval with Tris-EDTA buffer (pH 9.0).



Immunofluorescent analysis of (-20°C Ethanol) fixed HeLa cells using Cdc20 antibody (10252-1-AP) at dilution of 1:400 and CoraLite®488-Conjugated Goat Anti-Rabbit IgG(H+L).



IP result of anti-Cdc20 (IP:10252-1-AP, 4ug; Detection:10252-1-AP 1:15000) with Jurkat cells lysate 1400 ug.