

# STAT6 70kDa Polyclonal antibody

Catalog Number: 10257-1-AP

2 Publications

## Basic Information

## Catalog Number:

10257-1-AP

## Size:

150ul, Concentration: 370 µg/ml by Nanodrop and 367 µg/ml by Bradford method using BSA as the standard;

## Source:

Rabbit

## Isotype:

IgG

## Immunogen Catalog Number:

AG0410

## GenBank Accession Number:

BC005823

## GeneID (NCBI):

6778

## UNIPROT ID:

P42226

## Full Name:

signal transducer and activator of transcription 6, interleukin-4 induced

## Calculated MW:

100 kDa

## Observed MW:

75-80 kDa

## Purification Method:

Antigen affinity purification

## Recommended Dilutions:

WB 1:500-1:2000

IHC 1:20-1:200

## Applications

## Tested Applications:

WB, IHC, ELISA

## Cited Applications:

WB

## Species Specificity:

human, mouse, rat

## Cited Species:

mouse, rat

**Note-IHC: suggested antigen retrieval with TE buffer pH 9.0; (\*) Alternatively, antigen retrieval may be performed with citrate buffer pH 6.0**

## Positive Controls:

WB: HeLa cells,

IHC: human spleen tissue,

## Background Information

STAT6, also named as Signal transducer and activator of transcription 6, is a 847 amino acid protein, which belongs to the transcription factor STAT family. STAT6 forms a homodimer or a heterodimer with a related family member. STAT6 translocates into the nucleus in response to phosphorylation. STAT6 is Involved in IL4/interleukin-4- and IL3/interleukin-3-mediated signaling. This poly-antibody only recognizes 70 kDa isoform of STAT6.

## Notable Publications

Author	Pubmed ID	Journal	Application
Ying Xu	34425061	Pharm Biol	WB
Yiwei Zhang	34456714	Front Pharmacol	WB

## Storage

## Storage:

Store at -20°C. Stable for one year after shipment.

## Storage Buffer:

PBS with 0.02% sodium azide and 50% glycerol pH 7.3.

Aliquoting is unnecessary for -20°C storage

\*\*\* 20ul sizes contain 0.1% BSA

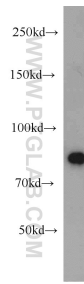
For technical support and original validation data for this product please contact:

T: 1 (888) 4PTGLAB (1-888-478-4522) (toll free in USA), or 1(312) 455-8498 (outside USA)

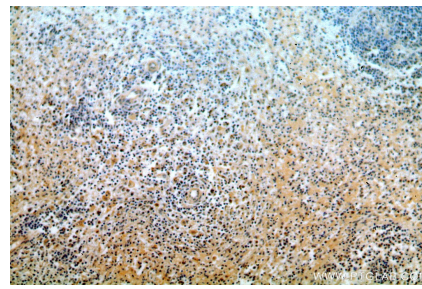
E: [proteintech@ptglab.com](mailto:proteintech@ptglab.com)  
W: [ptglab.com](http://ptglab.com)

This product is exclusively available under Proteintech Group brand and is not available to purchase from any other manufacturer.

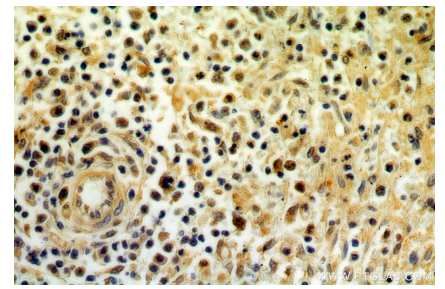
## Selected Validation Data



HeLa cells were subjected to SDS PAGE followed by western blot with 10257-1-AP (STAT6 antibody) at dilution of 1:1000 incubated at room temperature for 1.5 hours.



Immunohistochemical analysis of paraffin-embedded human spleen using 10257-1-AP (STAT6 antibody) at dilution of 1:50 (under 10x lens).



Immunohistochemical analysis of paraffin-embedded human spleen using 10257-1-AP (STAT6 antibody) at dilution of 1:50 (under 40x lens).