

For Research Use Only

LSM1 Polyclonal antibody

Catalog Number: 10259-1-AP



Basic Information

Catalog Number: 10259-1-AP	GenBank Accession Number: BC001767	Purification Method: Antigen affinity purification
Size: 150ul , Concentration: 293 µg/ml by Bradford method using BSA as the standard;	GeneID (NCBI): 27257	Recommended Dilutions: WB 1:500-1:1000
Source: Rabbit	UNIPROT ID: O15116	IP 0.5-4.0 ug for 1.0-3.0 mg of total protein lysate
Isotype: IgG	Full Name: LSM1 homolog, U6 small nuclear RNA associated (<i>S. cerevisiae</i>)	IHC 1:20-1:200
Immunogen Catalog Number: AG0232	Calculated MW: 15 kDa	
	Observed MW: 18-20 kDa	

Applications

Tested Applications: WB, IP, IHC, ELISA	Positive Controls:
Species Specificity: human, mouse, rat	WB : HeLa cells, mouse kidney tissue
Note-IHC: suggested antigen retrieval with TE buffer pH 9.0; (*) Alternatively, antigen retrieval may be performed with citrate buffer pH 6.0	IP : HeLa cells,
	IHC : human prostate cancer tissue,

Background Information

Lsm1 is a component of the Lsm1-7 complex involved in cytoplasmic mRNA degradation. Lsm1 is a key subunit that determines the RNA-binding properties of this complex. The normal RNA-binding activity of this complex is crucial for mRNA decay and 3'-end protection in vivo and requires the intact Sm-domain of Lsm1. LSM1 localizes to cytoplasmic processing bodies (P bodies) involved in mRNA storage, processing, regulation, and degradation and is required for P-body formation. LSM1 proteins facilitate the formation of U4/U6 RNA duplexes in vitro and may play a role in U4/U6 snRNP formation.

Storage

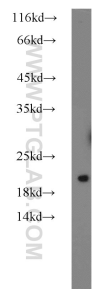
Storage:
Store at -20°C. Stable for one year after shipment.
Storage Buffer:
PBS with 0.02% sodium azide and 50% glycerol pH 7.3.
Aliquoting is unnecessary for -20°C storage

*** 20ul sizes contain 0.1% BSA

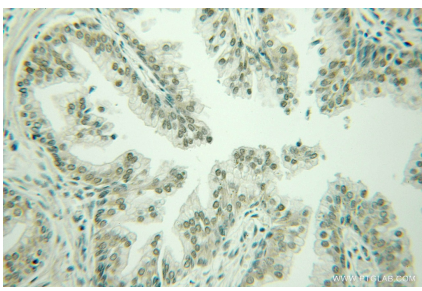
For technical support and original validation data for this product please contact:
T: 1 (888) 4PTGLAB (1-888-478-4522) (toll free in USA), or 1(312) 455-8498 (outside USA)
E: proteintech@ptglab.com
W: ptglab.com

This product is exclusively available under Proteintech Group brand and is not available to purchase from any other manufacturer.

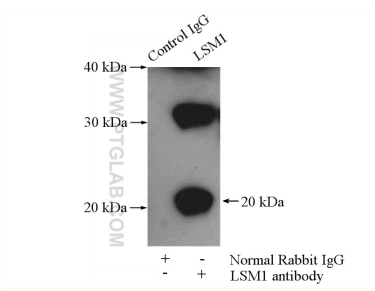
Selected Validation Data



HeLa cells were subjected to SDS PAGE followed by western blot with 10259-1-AP (LSM1 antibody) at dilution of 1:600 incubated at room temperature for 1.5 hours.



Immunohistochemical analysis of paraffin-embedded human prostate cancer using 10259-1-AP (LSM1 antibody) at dilution of 1:100 (under 10x lens).



IP result of anti-LSM1 (IP:10259-1-AP, 4ug; Detection:10259-1-AP 1:300) with HeLa cells lysate 2000ug.