

For Research Use Only

calreticulin Polyclonal antibody

Catalog Number: 10292-1-AP

Featured Product

107 Publications



Basic Information

Catalog Number:

10292-1-AP

Size:

150ul, Concentration: 400 ug/ml by Nanodrop;

Source:

Rabbit

Isotype:

IgG

Immunogen Catalog Number:

AG0325

GenBank Accession Number:

BC002500

GeneID (NCBI):

811

UNIPROT ID:

P27797

Full Name:

calreticulin

Calculated MW:

60 kDa

Observed MW:

55 kDa

Purification Method:

Antigen affinity purification

Recommended Dilutions:

WB: 1:500-1:2000

IHC: 1:50-1:500

FC (Intra): 0.40 ug per 10⁶ cells in a 100 µl suspension

Applications

Tested Applications:

WB, IHC, FC (Intra), ELISA

Cited Applications:

WB, IHC, CoIP

Species Specificity:

human, mouse, rat

Cited Species:

human, mouse, rat

Note-IHC: suggested antigen retrieval with TE buffer pH 9.0; (*) Alternatively, antigen retrieval may be performed with citrate buffer pH 6.0

Positive Controls:

WB: HL-60 cells, A549 cells, mouse brain tissue, COLO 320 cells, NIH/3T3 cells, human skeletal muscle tissue, rat brain tissue, HeLa cells, HepG2 cells, MCF-7 cells, SH-SY5Y cells

IHC: human thyroid tissue, human normal colon, human skeletal muscle tissue, human thyroid cancer tissue, mouse colon tissue, mouse lung tissue

FC (Intra): Jurkat cells,

Background Information

CALR, also named as grp60, ERp60, HACBP, CRP55, CRTC and Calregulin, belongs to the calreticulin family. It is a molecular calcium-binding chaperone promoting folding, oligomeric assembly and quality control in the ER via the calreticulin/calnexin cycle. CALR is a ER marker. It interacts transiently with almost all of the monoglucosylated glycoproteins that are synthesized in the ER. CALR interacts with the DNA-binding domain of NR3C1 and mediates its nuclear export. The MW of CALR migrates aberrantly at 55 kDa by SDS-PAGE. Some study provided that it's a new possibility for CRT-mediated tumor immune prevention and treatment.

Notable Publications

Author	Pubmed ID	Journal	Application
Lihua Luo	34593005	J Nanobiotechnology	WB
Xuan Wang	36167857	Nat Commun	WB
Yezi Chen	36105615	Int J Nanomedicine	

Storage

Storage:

Store at -20°C. Stable for one year after shipment.

Storage Buffer:

PBS with 0.02% sodium azide and 50% glycerol, pH7.3

Aliquoting is unnecessary for -20°C storage

*** 20ul sizes contain 0.1% BSA

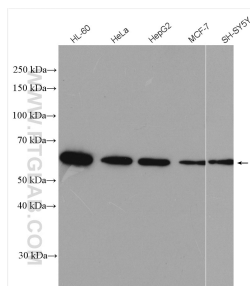
For technical support and original validation data for this product please contact:

T: 1 (888) 4PTGLAB (1-888-478-4522) (toll free in USA), or 1(312) 455-8498 (outside USA)

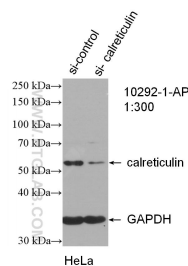
E: proteintech@ptglab.com
W: ptglab.com

This product is exclusively available under Proteintech Group brand and is not available to purchase from any other manufacturer.

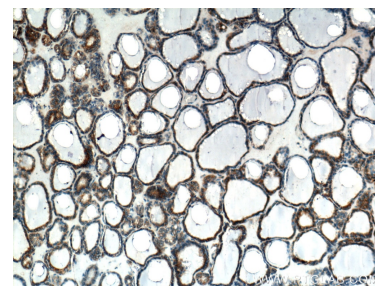
Selected Validation Data



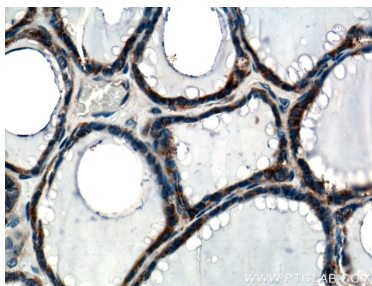
Various lysates were subjected to SDS PAGE followed by western blot with 10292-1-AP (calreticulin antibody) at dilution of 1:1000 incubated at room temperature for 1.5 hours.



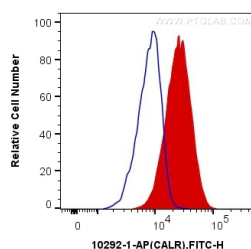
WB result of calreticulin antibody (10292-1-AP; 1:300; incubated at room temperature for 1.5 hours) with sh-Control and sh-calreticulin transfected HeLa cells.



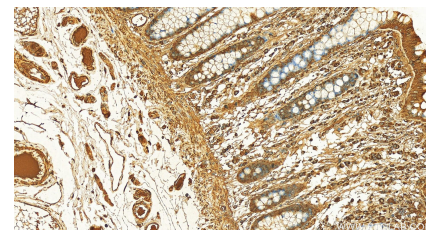
Immunohistochemical analysis of paraffin-embedded human thyroid tissue slide using 10292-1-AP (calreticulin Antibody) at dilution of 1:200 (under 10x lens).



Immunohistochemical analysis of paraffin-embedded human thyroid tissue slide using 10292-1-AP (calreticulin Antibody) at dilution of 1:200 (under 40x lens).



1X10⁶ Jurkat cells were intracellularly stained with 0.4 ug Anti-Human calreticulin (10292-1-AP) and CoraLite®488-Conjugated AffiniPure Goat Anti-Rabbit IgG(H+L) at dilution 1:1000 (red), or 0.4 ug Control Antibody. Cells were fixed with 4% PFA and permeabilized with Flow Cytometry Perm Buffer (PF00011-C).



Immunohistochemical analysis of paraffin-embedded normal colon slide using 10292-1-AP (calreticulin antibody) at dilution of 1:200 (under 20x lens). Heat mediated antigen retrieval with Tris-EDTA buffer (pH 9.0).