

# PAX8

## Polyclonal ANTIBODY

Catalog Number: 10336-1-AP

Featured Product

222 Publications

### Basic Information

**Catalog Number:**  
10336-1-AP

**Size:**  
35 µg/150 µl

**Source:**  
Rabbit

**Isotype:**  
IgG

**Purification Method:**  
Antigen affinity purification

**Immunogen Catalog Number:**  
AG0306

**GenBank Accession Number:**  
BC001060

**GeneID (NCBI):**  
7849

**Full Name:**  
paired box 8

**Calculated MW:**  
48 kDa

**Observed MW:**  
48 kDa, 58 kDa

**Recommended Dilutions:**

WB 1:2000-1:10000

IHC 1:1000-1:5000

IF 1:50-1:200

### Applications

**Tested Applications:**

FC, IF, IHC, IP, WB, ELISA

**Cited Applications:**

IF, IHC, WB

**Species Specificity:**

human, mouse, rat

**Cited Species:**

bovine, human, mouse, rat, zebrafish

**Positive Controls:**

WB : SKOV-3 cells; HEK-293 cells, NIH/3T3 cells, Raji cells

IHC : human ovary tumor tissue; human thyroid cancer tissue, rat kidney tissue, human testis tissue, human renal cell carcinoma tissue, mouse kidney tissue

IF : SKOV-3 cells;

### Background Information

PAX8 is a member of the paired box (PAX) family of transcription factors, typically containing a paired box domain and a paired-type homeodomain. It is expressed during organogenesis of the thyroid gland, kidney and Mullerian system. It is thought to regulate the expression of Wilms tumor suppressor (WT1) gene and mutations in PAX8 have been associated with Wilms tumor cells, thyroid and ovarian carcinomas. PAX8 is a useful marker in distinguishing ovarian carcinomas from mammary carcinomas (PMD: 18724243). PAX8 is expressed in a high percentage of ovarian serous, endometrioid, and clear cell carcinomas, but only rarely in primary ovarian mucinous adenocarcinomas.

This antibody can detect all 5 isoforms of PAX8 (31 kDa, 34 kDa, 41 kDa, 43 kDa, and 48 kDa). A 58-60 kDa form has also been reported (PMD:15650356, 1049952). Proteintech's 10336-1-AP antibody has cross-reactivities with the other PAX family members.

### Notable Publications

Author	Pubmed ID	Journal	Application
Alessia Calcagni	27668431	Elife	IHC
Koo Jamie J	24037217	Endocr Pathol	IHC
G Hua	26364602	Oncogene	WB, IHC

### Storage

**Storage:**

Store at -20°C. Stable for one year after shipment.

**Storage Buffer:**

PBS with 0.1% sodium azide and 50% glycerol pH 7.3.

Aliquoting is unnecessary for -20°C storage

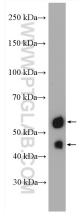
For technical support and original validation data for this product please contact:

T: 1 (888) 4PTGLAB (1-888-478-4522) (toll free in USA), or 1(312) 455-8498 (outside USA)

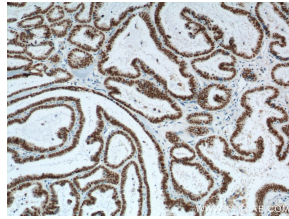
E: [proteintech@ptglab.com](mailto:proteintech@ptglab.com)  
W: [ptglab.com](http://ptglab.com)

This product is exclusively available under Proteintech Group brand and is not available to purchase from any other manufacturer.

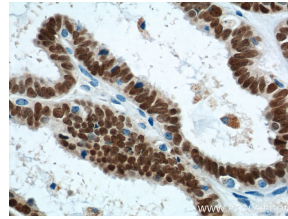
## Selected Validation Data



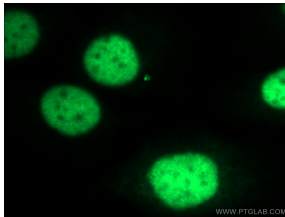
SKOV-3 cells were subjected to SDS PAGE followed by western blot with 10336-1-AP (PAX8 antibody) at dilution of 1:5000 incubated at room temperature for 1.5 hours



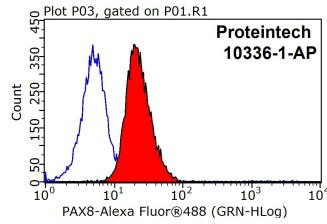
Immunohistochemistry of paraffin-embedded human ovary tumor tissue slide using 10336-1-AP (PAX8 Antibody) at dilution of 1:1200 (under 10x lens), heat mediated antigen retrieved with Tris-EDTA buffer (pH9).



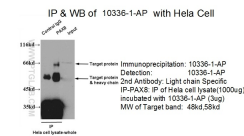
Immunohistochemistry of paraffin-embedded human ovary tumor tissue slide using 10336-1-AP (PAX8 Antibody) at dilution of 1:1200 (under 40x lens), heat mediated antigen retrieved with Tris-EDTA buffer (pH9).



Immunofluorescent analysis of (4% PFA) fixed SKOV-3 cells using 10336-1-AP (PAX8 antibody) at dilution of 1:100 and Alexa Fluor 488-conjugated AffiniPure Goat Anti-Rabbit IgG(H+L)



1X10<sup>6</sup> HeLa cells were stained with 0.2ug PAX8 antibody (10336-1-AP, red) and control antibody (blue). Fixed with 90% MeOH blocked with 3% BSA (30 min). Alexa Fluor 488-conjugated AffiniPure Goat Anti-Rabbit IgG(H+L) with dilution 1:1000.



IP result of anti-PAX8 (10336-1-AP for IP and Detection) with HeLa cell.