

For Research Use Only

GRWD1 Polyclonal antibody

Catalog Number: 10354-1-AP

1 Publications



Basic Information

Catalog Number:

10354-1-AP

Size:

150ul, Concentration: 800 ug/ml by Nanodrop and 400 ug/ml by Bradford method using BSA as the standard;

Source:

Rabbit

Isotype:

IgG

Immunogen Catalog Number:

AG0367

GenBank Accession Number:

BC002440

GeneID (NCBI):

83743

UNIPROT ID:

Q9BQ67

Full Name:

glutamate-rich WD repeat containing 1

Calculated MW:

49 kDa

Observed MW:

49 kDa

Purification Method:

Antigen affinity purification

Recommended Dilutions:

WB 1:500-1:1000

IP 0.5-4.0 ug for 1.0-3.0 mg of total protein lysate

IHC 1:20-1:200

Applications

Tested Applications:

WB, IP, IHC, ELISA

Cited Applications:

WB, IHC

Species Specificity:

human

Cited Species:

human

Note-IHC: suggested antigen retrieval with TE buffer pH 9.0; (*) Alternatively, antigen retrieval may be performed with citrate buffer pH 6.0

Positive Controls:

WB : HEK-293 cells, PC-3 cells, SKOV-3 cells

IP : PC-3 cells,

IHC : human prostate cancer tissue,

Background Information

WD-repeat proteins are a class of functionally divergent molecules that cooperate with other proteins to regulate cellular processes. WD-repeat proteins have been implicated in a variety of cellular functions that are mostly regulatory in nature, including cytoskeleton organization, vesicular fusion, pre-mRNA splicing, and cell cycle regulation. WD-repeat-containing protein designated glutamate-rich WD repeat (GRWD1) is a component of the 50S and 80S preribosomal complexes and plays a role in ribosome biogenesis and during myeloid differentiation its levels are regulated. [PMID:15885502]

Notable Publications

Author	Pubmed ID	Journal	Application
Qiongzi Wang	31891681	Exp Cell Res	WB,IHC

Storage

Storage:

Store at -20°C. Stable for one year after shipment.

Storage Buffer:

PBS with 0.02% sodium azide and 50% glycerol pH 7.3.

Aliquoting is unnecessary for -20°C storage

*** 20ul sizes contain 0.1% BSA

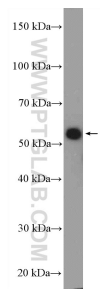
For technical support and original validation data for this product please contact:

T: 1 (888) 4PTGLAB (1-888-478-4522) (toll free in USA), or 1(312) 455-8498 (outside USA)

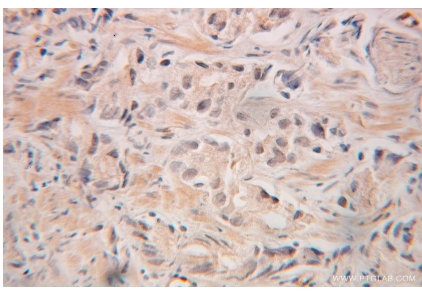
E: proteintech@ptglab.com
W: ptglab.com

This product is exclusively available under Proteintech Group brand and is not available to purchase from any other manufacturer.

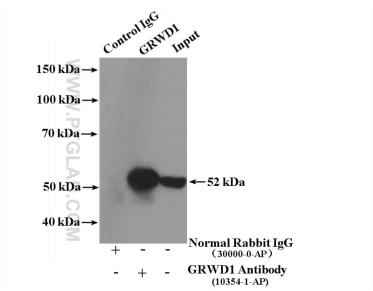
Selected Validation Data



HEK-293 cells were subjected to SDS PAGE followed by western blot with 10354-1-AP (GRWD1 Antibody) at dilution of 1:600 incubated at room temperature for 1.5 hours.



Immunohistochemical analysis of paraffin-embedded human prostate cancer using 10354-1-AP (GRWD1 antibody) at dilution of 1:100 (under 25x lens).



IP result of anti-GRWD1 (IP:10354-1-AP, 4ug; Detection:10354-1-AP 1:1000) with PC-3 cells lysate 4000ug.