

For Research Use Only

# MAPRE2 Polyclonal antibody

Catalog Number: 10364-1-AP

Featured Product

2 Publications



## Basic Information

<b>Catalog Number:</b> 10364-1-AP	<b>GenBank Accession Number:</b> BC007318	<b>Purification Method:</b> Antigen affinity purification
<b>Size:</b> 150ul , Concentration: 300 µg/ml by Nanodrop and 250 µg/ml by Bradford method using BSA as the standard;	<b>GeneID (NCBI):</b> 10982	<b>Recommended Dilutions:</b> WB 1:500-1:2000 IF 1:50-1:500
<b>Source:</b> Rabbit	<b>Full Name:</b> microtubule-associated protein, RP/EB family, member 2	
<b>Isotype:</b> IgG	<b>Calculated MW:</b> 37 kDa	
<b>Immunogen Catalog Number:</b> AG0416	<b>Observed MW:</b> 39-42 kDa	

## Applications

<b>Tested Applications:</b> IF, WB, ELISA	<b>Positive Controls:</b> WB : K-562 cells, Jurkat cells IF : mouse cells,
<b>Cited Applications:</b> WB	
<b>Species Specificity:</b> human, mouse	
<b>Cited Species:</b> mouse	

## Background Information

RP1 protein shares significant homology to the adenomatous polyposis coli (APC) protein-binding EB1 gene family and binds specifically to the C-terminal region of the APC protein. RP1 also binds directly to tubulin, both in vitro and in vivo. The function of RP1 is currently unknown; however, its homology suggests involvement in tumorigenesis of colorectal cancers and proliferative control of normal cells. It may belong to the intermediate/early gene family, involved in the signal transduction cascade downstream of the TCR.

## Notable Publications

Author	Pubmed ID	Journal	Application
Odetta Antico	34767452	Sci Adv	WB
Yuan-Yuan Li	35398309	Exp Cell Res	WB

## Storage

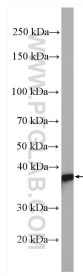
**Storage:**  
Store at -20°C. Stable for one year after shipment.  
**Storage Buffer:**  
PBS with 0.02% sodium azide and 50% glycerol pH 7.3.  
Aliquoting is unnecessary for -20°C storage

\*\*\* 20ul sizes contain 0.1% BSA

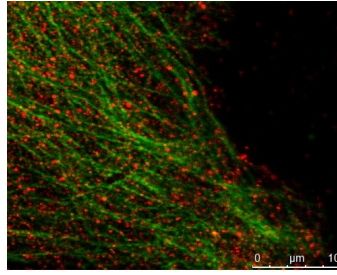
For technical support and original validation data for this product please contact:  
T: 1 (888) 4PTGLAB (1-888-478-4522) (toll free in USA), or 1(312) 455-8498 (outside USA)  
E: proteintech@ptglab.com  
W: ptglab.com

This product is exclusively available under Proteintech Group brand and is not available to purchase from any other manufacturer.

## Selected Validation Data



K-562 cells were subjected to SDS PAGE followed by western blot with 10364-1-AP (MAPRE2 antibody) at dilution of 1:1000 incubated at room temperature for 1.5 hours.



Mouse keratinocyte showing MAPRE2 (#10364-1-AP, 1:100 dilution, with Alexa 594 labelled 2nd Ab) in red and alpha-tubulin (#66031-1-1g, 1:100 dilution, with Alexa 488 labelled 2nd Ab) in green.