

For Research Use Only

BAP1 Polyclonal antibody

Catalog Number: 10398-1-AP

5 Publications



Basic Information

Catalog Number:

10398-1-AP

Size:

150ul, Concentration: 280 ug/ml by Nanodrop and 133 ug/ml by Bradford method using BSA as the standard;

Source:

Rabbit

Isotype:

IgG

Immunogen Catalog Number:

AG0597

GenBank Accession Number:

BC001596

GeneID (NCBI):

8314

UNIPROT ID:

Q92560

Full Name:

BRCA1 associated protein-1 (ubiquitin carboxy-terminal hydrolase)

Calculated MW:

81-91 kDa

Observed MW:

91 kDa

Purification Method:

Antigen affinity purification

Recommended Dilutions:

WB 1:500-1:1000

IP 0.5-4.0 ug for 1.0-3.0 mg of total protein lysate

IHC 1:50-1:500

Applications

Tested Applications:

WB, IHC, IP, ELISA

Cited Applications:

WB, IF

Species Specificity:

human

Cited Species:

human, mouse

Positive Controls:

WB : A2780 cells, human placenta tissue

IP : HeLa cells,

IHC : human ovary tumor tissue, human lung cancer tissue

Note-IHC: suggested antigen retrieval with TE buffer pH 9.0; (*) Alternatively, antigen retrieval may be performed with citrate buffer pH 6.0

Background Information

BRCA1-associated protein-1 (BAP1), also named as KIAA0272, huCEP-6, DKFZp686N04275, FLJ35406, FLJ37180, HUCEP-13, is a deubiquitinating enzyme whose function in the control of the cell cycle requires both its deubiquitinating activity and nuclear localization (PMID:22374320). It helps to control cell proliferation by regulating HCFC1 protein levels and by associating with genes involved in the G(1)-S transition (PMID:19188440). Defects in BAP1 may be a cause of mesothelioma malignant (MESOM) (PMID:21642991) and tumor predisposition syndrome (TPDS) (PMID:21874003). The all BAP1s except those of C. quinquefasciatus have a molecular mass of more than 90 kDa (PMID:22374320).

Notable Publications

Author	Pubmed ID	Journal	Application
Chenggang Zhang	36590171	iScience	WB
Xing Huang	31399419	Cancer Immunol Res	WB
Wei-Ting Lu	39738653	Nat Cell Biol	WB

Storage

Storage:

Store at -20°C. Stable for one year after shipment.

Storage Buffer:

PBS with 0.02% sodium azide and 50% glycerol pH 7.3.

Aliquoting is unnecessary for -20°C storage

*** 20ul sizes contain 0.1% BSA

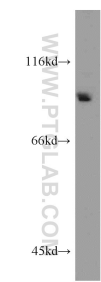
For technical support and original validation data for this product please contact:

T: 1 (888) 4PTGLAB (1-888-478-4522) (toll free in USA), or 1(312) 455-8498 (outside USA)

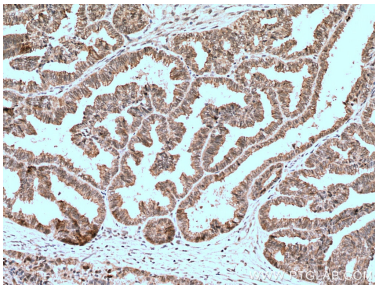
E: proteintech@ptglab.com
W: ptglab.com

This product is exclusively available under Proteintech Group brand and is not available to purchase from any other manufacturer.

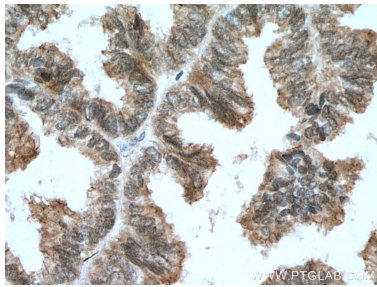
Selected Validation Data



A2780 cells were subjected to SDS PAGE followed by western blot with 10398-1-AP (BAP1 antibody) at dilution of 1:300 incubated at room temperature for 1.5 hours.



Immunohistochemical analysis of paraffin-embedded human ovary tumor tissue slide using 10398-1-AP (BAP1 antibody) at dilution of 1:200 (under 10x lens). Heat mediated antigen retrieval with Tris-EDTA buffer (pH 9.0).



Immunohistochemical analysis of paraffin-embedded human ovary tumor tissue slide using 10398-1-AP (BAP1 antibody) at dilution of 1:200 (under 40x lens). Heat mediated antigen retrieval with Tris-EDTA buffer (pH 9.0).



IP result of anti-BAP1 (IP:10398-1-AP, 4ug; Detection:10398-1-AP 1:300) with HeLa cells lysate 3000ug.