

For Research Use Only

RPA2 Polyclonal antibody

Catalog Number: 10412-1-AP **15 Publications**



Basic Information

Catalog Number: 10412-1-AP	GenBank Accession Number: BC001630	Purification Method: Antigen affinity purification
Size: 150ul , Concentration: 600 µg/ml by Nanodrop;	GeneID (NCBI): 6118	Recommended Dilutions: WB 1:1000-1:6000 IP 0.5-4.0 ug for 1.0-3.0 mg of total protein lysate IHC 1:20-1:200 IF 1:50-1:500
Source: Rabbit	UNIPROT ID: P15927	
Isotype: IgG	Full Name: replication protein A2, 32kDa	
Immunogen Catalog Number: AG0690	Calculated MW: 29 kDa	
	Observed MW: 32 kDa	

Applications

Tested Applications: WB, IP, IF, IHC, ELISA	Positive Controls: WB : HEK-293 cells, mouse brain tissue, HeLa cells, SH-SY5Y cells IP : mouse kidney tissue, IHC : human gliomas tissue, IF : HeLa cells,
Cited Applications: WB, IP, IF, IHC, ChIP	
Species Specificity: human, mouse, rat	
Cited Species: human, mouse	

Note-IHC: suggested antigen retrieval with TE buffer pH 9.0; (*) Alternatively, antigen retrieval may be performed with citrate buffer pH 6.0

Background Information

RPA2, a subunit of the heterotrimeric replication protein A (RPA) complex, is overexpressed in various cancers. RPA2 is a major target for upstream kinases, including CDKs and the three PIKKs (ATR, ataxia-telangiectasia mutated [ATM], and DNA-PK). RPA2 comprises multiple critical Ser/Tr residues that are phosphorylated in sequential order in response to genotoxic stress.

Notable Publications

Author	Pubmed ID	Journal	Application
Tao Zhang	36050397	Nat Commun	WB
Jiao Zhao	35597237	Mol Cell	WB
Yushan Li	35341968	J Genet Genomics	IF

Storage

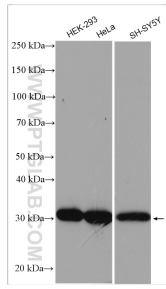
Storage:
Store at -20°C. Stable for one year after shipment.
Storage Buffer:
PBS with 0.02% sodium azide and 50% glycerol pH 7.3.
Aliquoting is unnecessary for -20°C storage

*** 20ul sizes contain 0.1% BSA

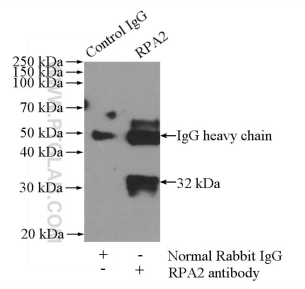
For technical support and original validation data for this product please contact:
T: 1 (888) 4PTGLAB (1-888-478-4522) (toll free in USA), or 1(312) 455-8498 (outside USA)
E: proteintech@ptglab.com
W: ptglab.com

This product is exclusively available under Proteintech Group brand and is not available to purchase from any other manufacturer.

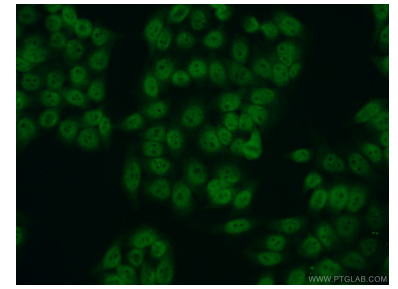
Selected Validation Data



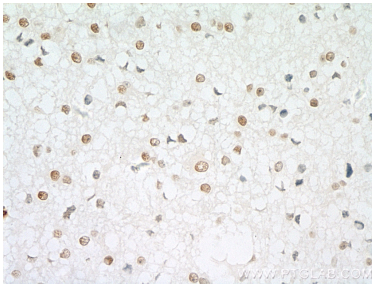
Various lysates were subjected to SDS PAGE followed by western blot with 10412-1-Ap (RPA2 antibody) at dilution of 1:3000 incubated at room temperature for 1.5 hours.



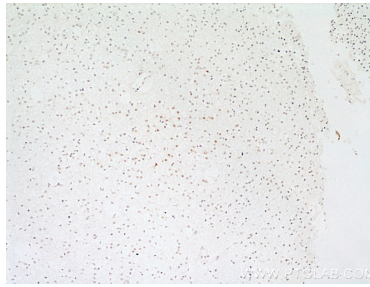
IP result of anti-RPA2 (IP:10412-1-Ap, 4ug; Detection:10412-1-Ap 1:1000) with mouse kidney tissue lysate 4000ug.



Immunofluorescent analysis of (10% Formaldehyde) fixed HeLa cells using 10412-1-Ap (RPA2 antibody) at dilution of 1:50 and CoraLite488-Conjugated AffiniPure Goat Anti-Rabbit IgG(H+L).



Immunohistochemical analysis of paraffin-embedded human gliomas tissue slide using 10412-1-Ap (RPA2 antibody) at dilution of 1:100 (under 40x lens)..



Immunohistochemical analysis of paraffin-embedded human gliomas tissue slide using 10412-1-Ap (RPA2 antibody) at dilution of 1:100 (under 10x lens)..