

For Research Use Only

# Connexin-32 Polyclonal antibody

Catalog Number: 10450-1-AP

7 Publications



## Basic Information

### Catalog Number:

10450-1-AP

### Size:

150ul, Concentration: 133 ug/ml by Nanodrop and 133 ug/ml by Bradford method using BSA as the standard;

### Source:

Rabbit

### Isotype:

IgG

### Immunogen Catalog Number:

AG0659

### GenBank Accession Number:

BC002805

### GeneID (NCBI):

2705

### UNIPROT ID:

P08034

### Full Name:

gap junction protein, beta 1, 32kDa

### Calculated MW:

32 kDa

### Observed MW:

32 kDa

### Purification Method:

Antigen affinity purification

### Recommended Dilutions:

WB 1:200-1:1000

IP 0.5-4.0 ug for 1.0-3.0 mg of total protein lysate

IHC 1:50-1:500

## Applications

### Tested Applications:

WB, IHC, IP, ELISA

### Cited Applications:

WB, IHC, IF

### Species Specificity:

human, mouse

### Cited Species:

human, mouse

### Positive Controls:

**WB**: mouse brain tissue, A375 cells, human liver tissue, mouse skin tissue

**IP**: mouse brain tissue,

**IHC**: human liver cancer tissue, human colon cancer tissue

**Note-IHC: suggested antigen retrieval with TE buffer pH 9.0; (\*) Alternatively, antigen retrieval may be performed with citrate buffer pH 6.0**

## Background Information

Connexin-32 (Cx32), also known as Gap junction beta 1 protein (GJB1), belongs to the connexin family. Connexins are membrane-spanning proteins that assemble to form gap junction channels that facilitate the transfer of ions and small molecules between cells. Connexin-32 is the major gap junction protein of liver, and the expression is also found in the brain and other organs. It is involved in tumorigenesis and liver regeneration. Connexin-32 plays an important role in peripheral nerve. Defects in Connexin-32 are the cause of Charcot-Marie-Tooth disease X-linked type 1 (CMTX1), an inherited peripheral neuropathy. Cx32 protein can be detected as a 27-32 kDa monomer and a 48-54 kDa dimer (PMID: 8266101; 8613761; 8608591; 19265674; 17972320; 19845480)

## Notable Publications

Author	Pubmed ID	Journal	Application
Nakase Taizen T	19794823	J Biomed Biotechnol	IHC
Wen-Qun Zhong	25270527	Histopathology	IHC, IF
Yi Sha S	23162640	Oncol Lett	WB

## Storage

### Storage:

Store at -20°C. Stable for one year after shipment.

### Storage Buffer:

PBS with 0.02% sodium azide and 50% glycerol pH 7.3.

Aliquoting is unnecessary for -20°C storage

\*\*\* 20ul sizes contain 0.1% BSA

For technical support and original validation data for this product please contact:

T: 1 (888) 4PTGLAB (1-888-478-4522) (toll free in USA), or 1(312) 455-8498 (outside USA)

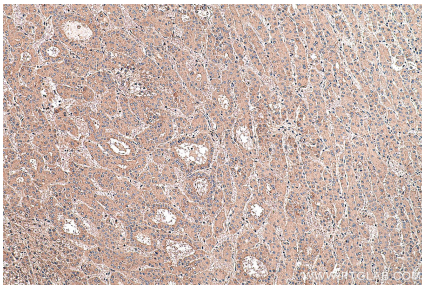
E: [proteintech@ptglab.com](mailto:proteintech@ptglab.com)  
W: [ptglab.com](http://ptglab.com)

This product is exclusively available under Proteintech Group brand and is not available to purchase from any other manufacturer.

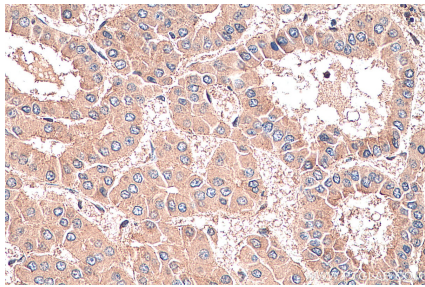
Selected Validation Data



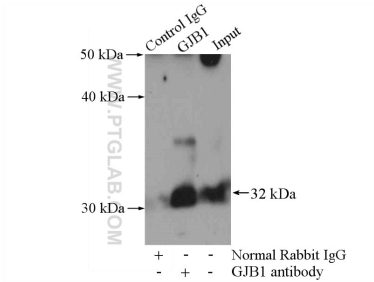
mouse brain tissue were subjected to SDS PAGE followed by western blot with 10450-1-AP (GJB1 antibody) at dilution of 1:300 incubated at room temperature for 1.5 hours.



Immunohistochemical analysis of paraffin-embedded human liver cancer tissue slide using 10450-1-AP (Connexin-32 antibody) at dilution of 1:200 (under 10x lens). Heat mediated antigen retrieval with Tris-EDTA buffer (pH 9.0).



Immunohistochemical analysis of paraffin-embedded human liver cancer tissue slide using 10450-1-AP (Connexin-32 antibody) at dilution of 1:200 (under 40x lens). Heat mediated antigen retrieval with Tris-EDTA buffer (pH 9.0).



IP result of anti-Connexin-32 (IP:10450-1-AP, 4ug; Detection:10450-1-AP 1:300) with mouse brain tissue lysate 4000ug.