

For Research Use Only

# NELF-A Polyclonal antibody

Catalog Number: 10456-1-AP

Featured Product

5 Publications



## Basic Information

### Catalog Number:

10456-1-AP

### Size:

150ul, Concentration: 700 ug/ml by Nanodrop;

### Source:

Rabbit

### Isotype:

IgG

### Immunogen Catalog Number:

AG0708

### GenBank Accession Number:

BC002764

### GeneID (NCBI):

7469

### UNIPROT ID:

Q9H3P2

### Full Name:

Wolf-Hirschhorn syndrome candidate

2

### Calculated MW:

57 kDa

### Observed MW:

57 kDa

### Purification Method:

Antigen affinity purification

### Recommended Dilutions:

WB 1:500-1:2000

IP 0.5-4.0 ug for 1.0-3.0 mg of total protein lysate

IF/ICC 1:10-1:100

## Applications

### Tested Applications:

WB, IF/ICC, IP, ELISA

### Cited Applications:

WB

### Species Specificity:

human, mouse

### Cited Species:

human, mouse

### Positive Controls:

WB : HeLa cells, mouse liver tissue, Jurkat cells, mouse brain tissue

IP : mouse brain tissue,

IF/ICC : HeLa cells,

## Background Information

WHSC2, also known as NELF-A, is a component of the Negative ELongation Factor complex, which inhibits RNA polymerase II progression early during elongation (a process referred to as 'promoter proximal pausing'), thereby altering expression of its target genes in a positive and negative manner [PMID:19245807]. This complex acts with DRB sensitivity-inducing factor (DSIF), a heterodimer of SPT4 and SPT5, to cause transcriptional pausing of RNA polymerase II [PMID:12612062].

## Notable Publications

Author	Pubmed ID	Journal	Application
Seina Ohe	36463234	Nat Commun	WB
Yuki Aoi	34480849	Mol Cell	
Xiaodong Lu	27353326	Nucleic Acids Res	WB

## Storage

### Storage:

Store at -20°C. Stable for one year after shipment.

### Storage Buffer:

PBS with 0.02% sodium azide and 50% glycerol pH 7.3.

Aliquoting is unnecessary for -20°C storage

\*\*\* 20ul sizes contain 0.1% BSA

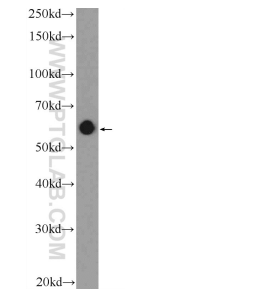
For technical support and original validation data for this product please contact:

T: 1 (888) 4PTGLAB (1-888-478-4522) (toll free in USA), or 1(312) 455-8498 (outside USA)

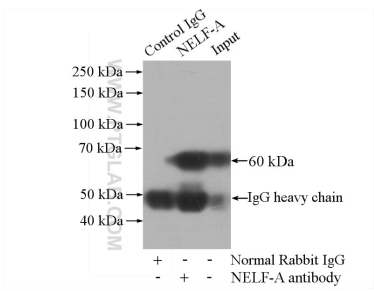
E: [proteintech@ptglab.com](mailto:proteintech@ptglab.com)  
W: [ptglab.com](http://ptglab.com)

This product is exclusively available under Proteintech Group brand and is not available to purchase from any other manufacturer.

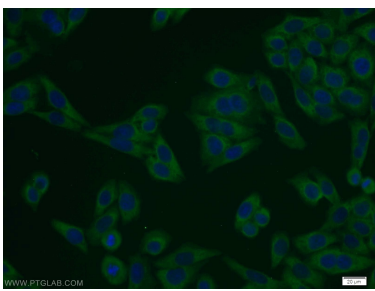
Selected Validation Data



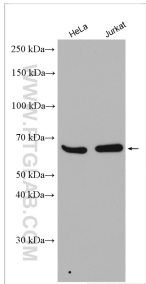
HeLa cells were subjected to SDS PAGE followed by western blot with 10456-1-AP (NELF-A Antibody) at dilution of 1:1000 incubated at room temperature for 1.5 hours.



IP result of anti-NELF-A (IP:10456-1-AP, 4ug; Detection:10456-1-AP 1:500) with mouse brain tissue lysate 3440ug.



Immunofluorescent analysis of HeLa cells using 10456-1-AP (NELF-A antibody) at dilution of 1:25 and Alexa Fluor 488-conjugated AffiniPure Goat Anti-Rabbit IgG(H+L).



Various lysates were subjected to SDS PAGE followed by western blot with 10456-1-AP (NELF-A antibody) at dilution of 1:8000 incubated at room temperature for 1.5 hours.