

For Research Use Only

MBP Polyclonal antibody

Catalog Number: 10458-1-AP **115 Publications**



Basic Information

Catalog Number: 10458-1-AP	GenBank Accession Number: BC008749	Purification Method: Antigen affinity purification
Size: 150ul , Concentration: 750 ug/ml by Nanodrop;	GeneID (NCBI): 4155	Recommended Dilutions: WB 1:2000-1:16000
Source: Rabbit	UNIPROT ID: P02686	IHC 1:50-1:500
Isotype: IgG	Full Name: myelin basic protein	IF-P 1:50-1:500
Immunogen Catalog Number: AG0713	Calculated MW: 33 kDa	IF-Fro 1:50-1:500
	Observed MW: 14-23 kDa	

Applications

Tested Applications: WB, IHC, IF-P, IF-Fro, ELISA	Positive Controls: WB : mouse brain tissue, rat brain tissue
Cited Applications: WB, IHC, IF	IHC : mouse brain tissue,
Species Specificity: human, mouse, rat	IF-P : mouse brain tissue,
Cited Species: human, mouse, rat, pig, rabbit	IF-Fro : mouse brain tissue,
Note-IHC: suggested antigen retrieval with TE buffer pH 9.0; (*) Alternatively, antigen retrieval may be performed with citrate buffer pH 6.0	

Background Information

MBP belongs to the myelin basic protein family. The classic group of MBP isoforms (isoform 4-isoform 14) are the most abundant protein components of the myelin membrane in the CNS. They have a role in both its formation and stabilization. The smaller isoforms might have an important role in remyelination of denuded axons in multiple sclerosis. The non-classic group of MBP isoforms (isoform 1-isoform 3/Golli-MBPs) may preferentially have a role in the early developing brain long before myelination, maybe as components of transcriptional complexes, and may also be involved in signaling pathways in T-cells and neural cells. MBP has six isoforms. Catalog# 10458-1-AP is capable of recognizing multiple isoforms of MBP.

Notable Publications

Author	Pubmed ID	Journal	Application
Wei Cai	36170234	Autophagy	IF,FC
Guangcong Peng	34562473	Brain Res	IF
Jiuyang Ding	34562559	Toxicol Lett	IHC

Storage

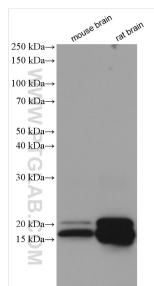
Storage:
Store at -20°C. Stable for one year after shipment.
Storage Buffer:
PBS with 0.02% sodium azide and 50% glycerol, pH7.3
Aliquoting is unnecessary for -20°C storage

*** 20ul sizes contain 0.1% BSA

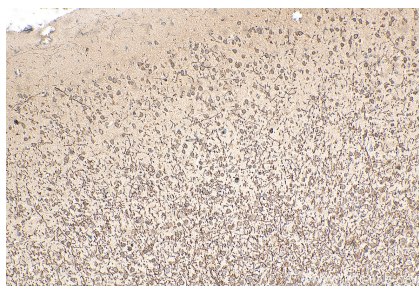
For technical support and original validation data for this product please contact:
T: 1 (888) 4PTGLAB (1-888-478-4522) (toll free in USA), or 1(312) 455-8498 (outside USA)
E: proteintech@ptglab.com
W: ptglab.com

This product is exclusively available under Proteintech Group brand and is not available to purchase from any other manufacturer.

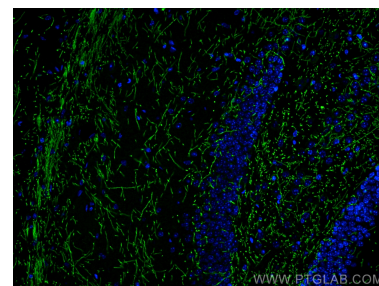
Selected Validation Data



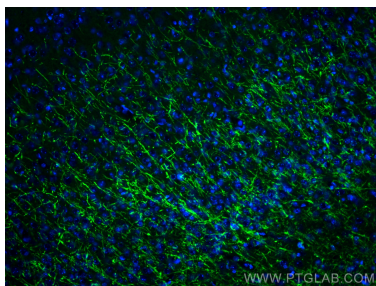
Various lysates were subjected to SDS PAGE followed by western blot with 10458-1-AP (Myelin basic protein antibody) at dilution of 1:8000 incubated at room temperature for 1.5 hours.



Immunohistochemical analysis of paraffin-embedded mouse brain tissue slide using 10458-1-AP (Myelin basic protein antibody) at dilution of 1:200 (under 10x lens). Heat mediated antigen retrieval with Tris-EDTA buffer (pH 9.0).



Immunofluorescent analysis of (4% PFA) fixed mouse brain tissue using Myelin basic protein antibody (10458-1-AP) at dilution of 1:200 and CoraLite®488-Conjugated AffiniPure Goat Anti-Rabbit IgG(H+L).



Immunofluorescent analysis of (4% PFA) fixed frozen OCT-embedded mouse brain tissue using Myelin basic protein antibody (10458-1-AP) at dilution of 1:200 and Multi-rAb CoraLite® Plus 488-Goat Anti-Rabbit Recombinant Secondary Antibody (H+L) (RGAR002).