

For Research Use Only

# TCL1A Polyclonal antibody

Catalog Number: 10475-1-AP **1 Publications**



## Basic Information

<b>Catalog Number:</b> 10475-1-AP	<b>GenBank Accession Number:</b> BC005831	<b>Purification Method:</b> Antigen affinity purification
<b>Size:</b> 150ul , Concentration: 700 µg/ml by Nanodrop and 300 µg/ml by Bradford method using BSA as the standard;	<b>GeneID (NCBI):</b> 8115	<b>Recommended Dilutions:</b> WB 1:200-1:1000 IHC 1:20-1:200
<b>Source:</b> Rabbit	<b>Full Name:</b> T-cell leukemia/lymphoma 1A	
<b>Isotype:</b> IgG	<b>Calculated MW:</b> 13 kDa	
<b>Immunogen Catalog Number:</b> AG0786	<b>Observed MW:</b> 14-16 kDa	

## Applications

<b>Tested Applications:</b> IHC, WB, ELISA	<b>Positive Controls:</b>
<b>Cited Applications:</b> WB	<b>WB:</b> Raji cells,
<b>Species Specificity:</b> human	<b>IHC:</b> human tonsillitis tissue, human lung cancer tissue
<b>Cited Species:</b> human	

**Note-IHC: suggested antigen retrieval with TE buffer pH 9.0; (\*) Alternatively, antigen retrieval may be performed with citrate buffer pH 6.0**

## Background Information

TCL1A, also named as TCL1 and p14 TCL1, enhances cell proliferation, stabilizes mitochondrial membrane potential and promotes cell survival. TCL1A immunodetection is an independent marker of adverse outcome that could be used in routine settings for the management of DLCL patients. TCL1A expression is correlated with shorter time to treatment in chronic lymphocytic leukemia cases and shorter lymphoma-specific survival in mantle cell lymphoma series. It is a potential therapeutic target.

## Notable Publications

Author	Pubmed ID	Journal	Application
Qun E	26289388	Cell Biol Int	WB

## Storage

**Storage:**  
Store at -20°C. Stable for one year after shipment.  
**Storage Buffer:**  
PBS with 0.02% sodium azide and 50% glycerol pH 7.3.  
Aliquoting is unnecessary for -20°C storage

\*\*\* 20ul sizes contain 0.1% BSA

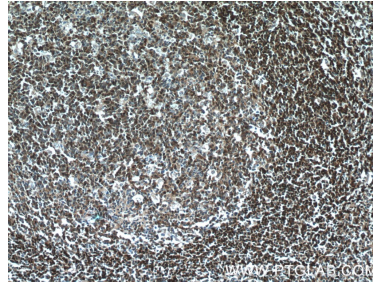
For technical support and original validation data for this product please contact:  
T: 1 (888) 4PTGLAB (1-888-478-4522) (toll free in USA), or 1(312) 455-8498 (outside USA)  
E: proteintech@ptglab.com  
W: ptglab.com

This product is exclusively available under Proteintech Group brand and is not available to purchase from any other manufacturer.

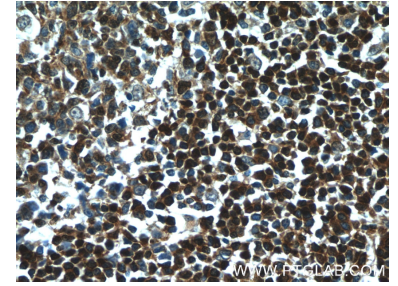
## Selected Validation Data



Raji cells were subjected to SDS PAGE followed by western blot with 10475-1-AP (TCL1A antibody) at dilution of 1:300 incubated at room temperature for 1.5 hours.



Immunohistochemical analysis of paraffin-embedded human tonsillitis tissue slide using 10475-1-AP (TCL1A Antibody) at dilution of 1:50 (under 10x lens).



Immunohistochemical analysis of paraffin-embedded human tonsillitis tissue slide using 10475-1-AP (TCL1A Antibody) at dilution of 1:50 (under 40x lens).