

For Research Use Only

# EEF1B2 Polyclonal antibody

Catalog Number: 10483-1-AP

Featured Product

13 Publications



## Basic Information

### Catalog Number:

10483-1-AP

### Size:

150ul, Concentration: 600 ug/ml by Nanodrop and 213 ug/ml by Bradford method using BSA as the standard;

### Source:

Rabbit

### Isotype:

IgG

### Immunogen Catalog Number:

AG0742

### GenBank Accession Number:

BC004931

### GeneID (NCBI):

1933

### UNIPROT ID:

P24534

### Full Name:

eukaryotic translation elongation factor 1 beta 2

### Calculated MW:

29 kDa

### Observed MW:

34 kDa

### Purification Method:

Antigen affinity purification

### Recommended Dilutions:

WB 1:500-1:2000

IHC 1:20-1:200

## Applications

### Tested Applications:

WB, IHC, ELISA

### Cited Applications:

WB, IF, IP

### Species Specificity:

human, mouse, rat

### Cited Species:

human, mouse, rat

**Note-IHC: suggested antigen retrieval with TE buffer pH 9.0; (\*) Alternatively, antigen retrieval may be performed with citrate buffer pH 6.0**

### Positive Controls:

WB : PC-3 cells, HepG2 cells, HeLa cells, HEK-293 cells, Jurkat cells, SKOV-3 cells, mouse kidney tissue

IHC : human pancreas cancer tissue,

## Background Information

In eukaryotes, the translation elongation factor eEF1A responsible for transporting amino-acylated tRNA to the ribosome forms a higher-order complex, eEF1H, with its guanine-nucleotide-exchange factor eEF1B. eEF1B consists of three subunits: eEF1B alpha, eEF1B beta and eEF1B gamma. The eEF1B2 possess the nucleotide-exchange activity. Although several models on the basis of in vitro experiments have been proposed for the macromolecular organization of the eEF1H complex, these models differ in various aspects. The human eukaryote elongation factor 1 beta 2 (eEF1B2) migrated as a 30 kDa protein in SDS-PAGE. This antibody is a rabbit polyclonal antibody raised against full length EEF1B2 of human origin.

## Notable Publications

Author	Pubmed ID	Journal	Application
Yusuke Terui	25425115	Amino Acids	WB
Pitteri Sharon J SJ	19936259	PLoS One	WB
Emily M Schleicher	33137164	PLoS Genet	WB

## Storage

### Storage:

Store at -20°C. Stable for one year after shipment.

### Storage Buffer:

PBS with 0.02% sodium azide and 50% glycerol pH 7.3.

Aliquoting is unnecessary for -20°C storage

\*\*\* 20ul sizes contain 0.1% BSA

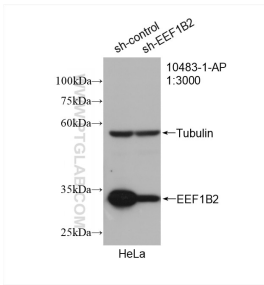
For technical support and original validation data for this product please contact:

T: 1 (888) 4PTGLAB (1-888-478-4522) (toll free in USA), or 1(312) 455-8498 (outside USA)

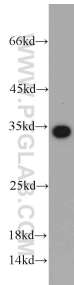
E: proteintech@ptglab.com  
W: ptglab.com

This product is exclusively available under Proteintech Group brand and is not available to purchase from any other manufacturer.

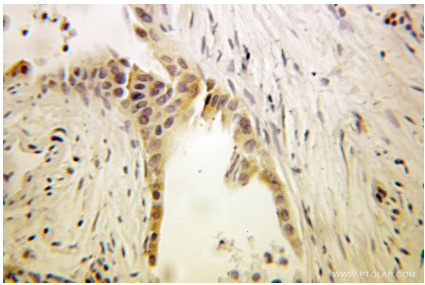
Selected Validation Data



WB result of EEF1B2 antibody (10483-1-AP; 1:3000; incubated at room temperature for 1.5 hours) with sh-Control and sh-EEF1B2 transfected HeLa cells.



PC-3 cells were subjected to SDS PAGE followed by western blot with 10483-1-AP (EEF1B2 antibody) at dilution of 1:1000 incubated at room temperature for 1.5 hours.



Immunohistochemical analysis of paraffin-embedded human pancreas cancer using 10483-1-AP (EEF1B2 antibody) at dilution of 1:100 (under 25x lens).