

For Research Use Only

ASC/TMS1 Polyclonal antibody

Catalog Number: 10500-1-AP

Featured Product

282 Publications



Basic Information

Catalog Number:

10500-1-AP

Size:

150ul, Concentration: 650 ug/ml by Nanodrop;

Source:

Rabbit

Isotype:

IgG

Immunogen Catalog Number:

AG0774

GenBank Accession Number:

BC004470

GeneID (NCBI):

29108

UNIPROT ID:

Q9ULZ3

Full Name:

PYD and CARD domain containing

Calculated MW:

25 kDa

Observed MW:

22-25 kDa

Purification Method:

Antigen affinity purification

Recommended Dilutions:

WB 1:5000-1:50000

IP 0.5-4.0 ug for 1.0-3.0 mg of total protein lysate

IHC 1:200-1:1000

Applications

Tested Applications:

WB, IHC, IP, ELISA

Cited Applications:

WB, IHC, IF, IP, CoIP, ELISA

Species Specificity:

human

Cited Species:

human, pig, canine, bovine

Note-IHC: suggested antigen retrieval with TE buffer pH 9.0; (*) Alternatively, antigen retrieval may be performed with citrate buffer pH 6.0

Positive Controls:

WB: HL-60 cells, A549 cells, Raji cells, U-937 cells, THP-1 cells

IP: HL-60 cells,

IHC: human lung cancer tissue,

Background Information

PYCARD, also known as ASC or TMS1, is a 195 amino acid protein containing an N-terminal Pyrin-like domain (PYD) and an 87 residue C-terminal Caspase-associated recruitment domain (CARD). It promotes caspase-mediated apoptosis which is mediated predominantly through the activation of caspase-9.

Notable Publications

Author	Pubmed ID	Journal	Application
JiangFan Yu	36248980	Front Oncol	WB
Sheng-Li Ming	33072119	Front Immunol	WB
Pengxiao Chen	34603026	Front Pharmacol	WB,IF

Storage

Storage:

Store at -20°C. Stable for one year after shipment.

Storage Buffer:

PBS with 0.02% sodium azide and 50% glycerol, pH7.3

Aliquoting is unnecessary for -20°C storage

*** 20ul sizes contain 0.1% BSA

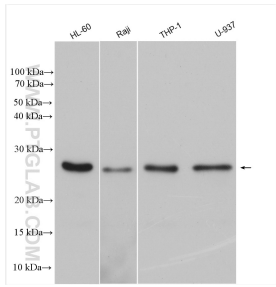
For technical support and original validation data for this product please contact:

T: 1 (888) 4PTGLAB (1-888-478-4522) (toll free in USA), or 1(312) 455-8498 (outside USA)

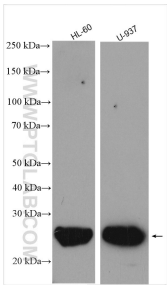
E: proteintech@ptglab.com
W: ptglab.com

This product is exclusively available under Proteintech Group brand and is not available to purchase from any other manufacturer.

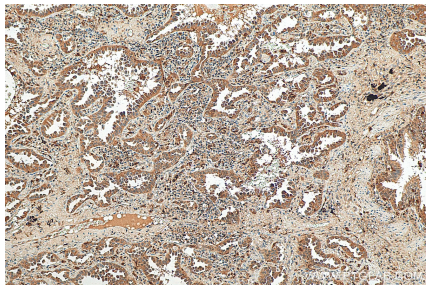
Selected Validation Data



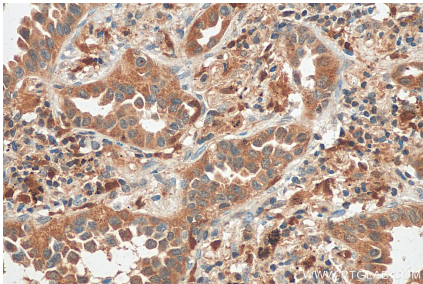
Various lysates were subjected to SDS PAGE followed by western blot with 10500-1-AP (ASC/TMS1 antibody) at dilution of 1:15000 incubated at room temperature for 1.5 hours.



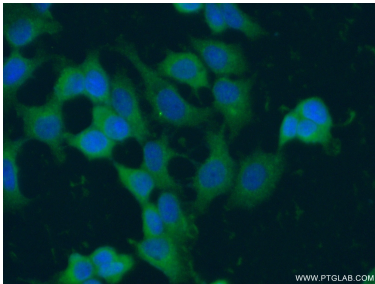
Various lysates were subjected to SDS PAGE followed by western blot with 10500-1-AP (ASC/TMS1 antibody) at dilution of 1:2000 incubated at room temperature for 1.5 hours.



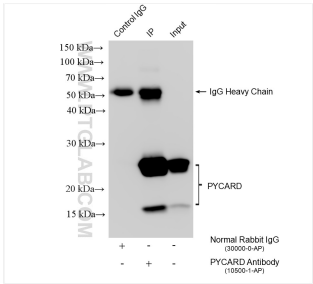
Immunohistochemical analysis of paraffin-embedded human lung cancer tissue slide using 10500-1-AP (ASC/TMS1 antibody) at dilution of 1:200 (under 10x lens). Heat mediated antigen retrieval with Tris-EDTA buffer (pH 9.0).



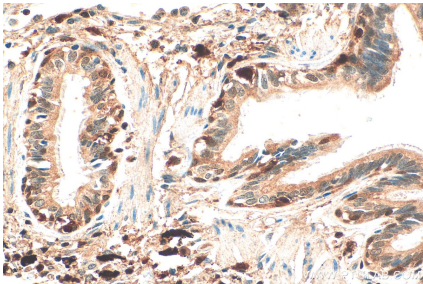
Immunohistochemical analysis of paraffin-embedded human lung cancer tissue slide using 10500-1-AP (ASC/TMS1 antibody) at dilution of 1:200 (under 40x lens). Heat mediated antigen retrieval with Tris-EDTA buffer (pH 9.0).



Immunofluorescent analysis of (-20°C Ethanol) fixed MCF-7 cells using 10500-1-AP (TMS1 antibody) at dilution of 1:50 and Alexa Fluor 488-conjugated AffiniPure Goat Anti-Rabbit IgG(H+L).



IP result of anti-ASC/TMS1 (IP:10500-1-AP, 4ug; Detection:10500-1-AP 1:10000) with HL-60 cells lysate 2240 ug.



Immunohistochemical analysis of paraffin-embedded human lung cancer tissue slide using 10500-1-AP (ASC/TMS1 antibody) at dilution of 1:1000 (under 40x lens). Heat mediated antigen retrieval with Tris-EDTA buffer (pH 9.0).