

For Research Use Only

# MCM2 Polyclonal antibody

Catalog Number: 10513-1-AP

Featured Product

44 Publications



## Basic Information

### Catalog Number:

10513-1-AP

### Size:

150ul, Concentration: 500 ug/ml by Nanodrop and 267 ug/ml by Bradford method using BSA as the standard;

### Source:

Rabbit

### Isotype:

IgG

### Immunogen Catalog Number:

AG0798

### GenBank Accession Number:

BC007670

### GeneID (NCBI):

4171

### UNIPROT ID:

P49736

### Full Name:

minichromosome maintenance complex component 2

### Calculated MW:

102 kDa

### Observed MW:

116-125 kDa

### Purification Method:

Antigen affinity purification

### Recommended Dilutions:

WB 1:500-1:3000

IP 0.5-4.0 ug for 1.0-3.0 mg of total protein lysate

IHC 1:1000-1:4000

IF-P 1:50-1:500

IF/ICC 1:50-1:500

## Applications

### Tested Applications:

WB, IHC, IF/ICC, IF-P, FC (Intra), IP, ELISA

### Cited Applications:

WB, IHC, IF, IP, RIP

### Species Specificity:

human, mouse

### Cited Species:

human, mouse, rat

**Note-IHC: suggested antigen retrieval with TE buffer pH 9.0; (\*) Alternatively, antigen retrieval may be performed with citrate buffer pH 6.0**

### Positive Controls:

WB : HEK-293 cells, HeLa cells, K-562 cells

IP : HEK-293 cells,

IHC : human tonsillitis tissue, human cervical cancer tissue

IF-P : human gliomas tissue,

IF/ICC : HeLa cells,

## Background Information

The MCM2-7 complex forms the core of the replicative helicase which acts as the molecular motor that uses ATP binding and hydrolysis to fuel the unwinding of double-stranded DNA at the replication fork in eukaryotes. This complex is the putative replicative helicase essential for 'once per cell cycle' DNA replication initiation and elongation in eukaryotic cells. MCM2, also named CDCL1 and BM28, is a human nuclear protein that plays an important role in 2 crucial steps of the cell cycle, namely, onset of DNA replication and cell division.

## Notable Publications

Author	Pubmed ID	Journal	Application
Irina Vazquez-Villasenor	34536321	Eur J Neurosci	IF
Chun Pan	36115647	Toxicology	IHC
Hana Polasek-Sedlackova	36241664	Nat Commun	IF

## Storage

### Storage:

Store at -20°C. Stable for one year after shipment.

### Storage Buffer:

PBS with 0.02% sodium azide and 50% glycerol pH 7.3.

Aliquoting is unnecessary for -20°C storage

\*\*\* 20ul sizes contain 0.1% BSA

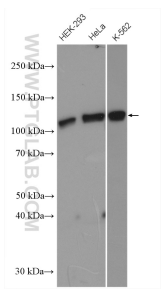
For technical support and original validation data for this product please contact:

T: 1 (888) 4PTGLAB (1-888-478-4522) (toll free in USA), or 1(312) 455-8498 (outside USA)

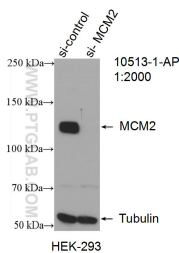
E: proteintech@ptglab.com  
W: ptglab.com

This product is exclusively available under Proteintech Group brand and is not available to purchase from any other manufacturer.

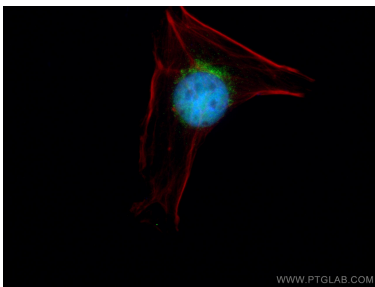
Selected Validation Data



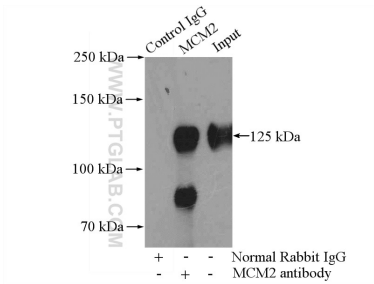
Various cells were subjected to SDS PAGE followed by western blot with 10513-1-AP (MCM2 antibody) at dilution of 1:1500 incubated at room temperature for 1.5 hours.



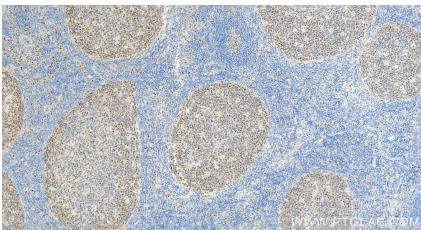
WB result of MCM2 antibody (10513-1-AP; 1:2000; incubated at room temperature for 1.5 hours) with sh-Control and sh-MCM2 transfected HEK-293 cells.



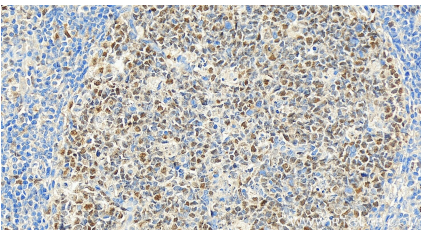
Immunofluorescent analysis of (4% PFA) fixed HeLa cells using MCM2 antibody (10513-1-AP) at dilution of 1:200 and CoraLite®488-Conjugated AffiniPure Goat Anti-Rabbit IgG(H+L), CL594-Phalloidin (red).



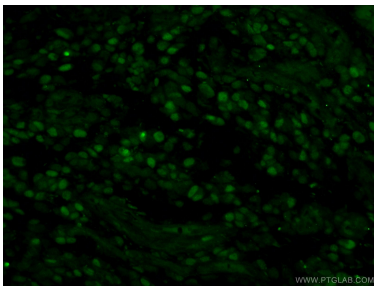
IP result of anti-MCM2 (IP:10513-1-AP, 4ug; Detection:10513-1-AP 1:800) with HEK-293 cells lysate 2800ug.



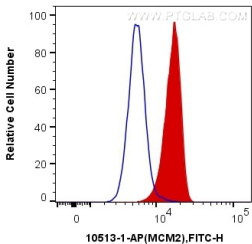
Immunohistochemical analysis of paraffin-embedded human tonsillitis tissue slide using 10513-1-AP (MCM2 antibody) at dilution of 1:2000 (under 20x lens). Heat mediated antigen retrieval with Tris-EDTA buffer (pH 9.0).



Immunohistochemical analysis of paraffin-embedded human tonsillitis tissue slide using 10513-1-AP (MCM2 antibody) at dilution of 1:2000 (under 20x lens). Heat mediated antigen retrieval with Tris-EDTA buffer (pH 9.0).



Immunofluorescent analysis of (4% PFA) fixed human gliomas tissue using 10513-1-AP (MCM2 antibody) at dilution of 1:50 and Alexa Fluor 488-conjugated AffiniPure Goat Anti-Rabbit IgG(H+L).



1X10<sup>6</sup> NIH/3T3 cells were intracellularly stained with 0.2 ug Anti-Human MCM2 (10513-1-AP) and CoraLite®488-Conjugated AffiniPure Goat Anti-Rabbit IgG(H+L) at dilution 1:1000 (red), or 0.2 ug Control Antibody. Cells were fixed and permeabilized with Transcription Factor Staining Buffer Kit (PF00011).