

For Research Use Only

PACSIN2 Polyclonal antibody

Catalog Number: 10518-2-AP

Featured Product

8 Publications



Basic Information

Catalog Number:

10518-2-AP

Size:

150ul, Concentration: 400 ug/ml by Nanodrop and 200 ug/ml by Bradford method using BSA as the standard;

Source:

Rabbit

Isotype:

IgG

Immunogen Catalog Number:

AG0809

GenBank Accession Number:

BC008037

GeneID (NCBI):

11252

UNIPROT ID:

Q9UNF0

Full Name:

protein kinase C and casein kinase substrate in neurons 2

Calculated MW:

56 kDa

Observed MW:

60-65 kDa

Purification Method:

Antigen affinity purification

Recommended Dilutions:

WB 1:500-1:2000

IP 0.5-4.0 ug for 1.0-3.0 mg of total protein lysate

IHC 1:200-1:800

IF/ICC 1:200-1:800

Applications

Tested Applications:

WB, IHC, IF/ICC, IP, ELISA

Cited Applications:

WB, IF

Species Specificity:

human, mouse

Cited Species:

human, mouse, zebrafish

Note-IHC: suggested antigen retrieval with TE buffer pH 9.0; (*) Alternatively, antigen retrieval may be performed with citrate buffer pH 6.0

Positive Controls:

WB: HEK-293 cells, mouse heart tissue, mouse lung tissue, NIH/3T3 cells, HepG2 cells

IP: NIH/3T3 cells,

IHC: human breast cancer tissue, human skin tissue

IF/ICC: NIH/3T3 cells,

Background Information

Peripheral membrane proteins of the Bin/amphiphysin/Rvs (BAR) and Fer-CIP4 homology-BAR (F-BAR) family participate in cellular membrane trafficking (PMID: 19549836). PACSIN2 (also known as syndapin-2) is a member of the protein kinase C and casein kinase substrate in neurons (PACSIN) family, which are membrane-binding proteins characterized by an amino-terminal F-BAR domain. PACSIN2 plays a role in intracellular vesicle-mediated transport. It is involved in the endocytosis of cell-surface receptors like the EGF receptor, contributing to its internalization (PMID: 23129763). PACSIN2 also has a role in caveolae membrane sculpting (PMID: 21610094).

Notable Publications

Author	Pubmed ID	Journal	Application
Simone Laura C LC	24040268	PLoS One	WB
X Liu	36267015	J Dent Res	WB
Claudia Matthaeus	36433988	Nat Commun	WB,IF

Storage

Storage:

Store at -20°C. Stable for one year after shipment.

Storage Buffer:

PBS with 0.02% sodium azide and 50% glycerol pH 7.3.

Aliquoting is unnecessary for -20°C storage

*** 20ul sizes contain 0.1% BSA

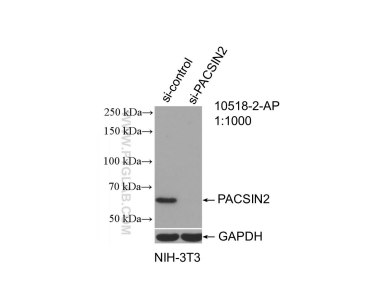
For technical support and original validation data for this product please contact:

T: 1 (888) 4PTGLAB (1-888-478-4522) (toll free in USA), or 1(312) 455-8498 (outside USA)

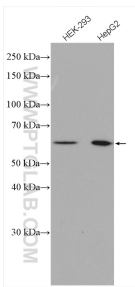
E: proteintech@ptglab.com
W: ptglab.com

This product is exclusively available under Proteintech Group brand and is not available to purchase from any other manufacturer.

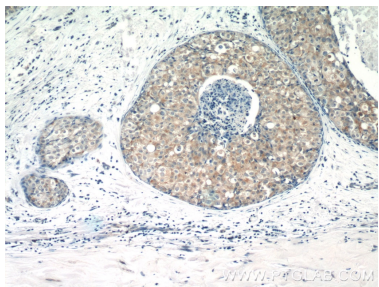
Selected Validation Data



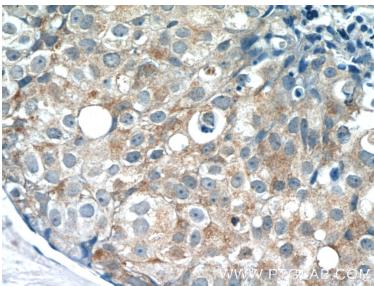
WB result of PACSIN2 antibody (10518-2-AP; 1:1000; incubated at room temperature for 1.5 hours) with sh-Control and sh-PACSIN2 transfected NIH/3T3 cells.



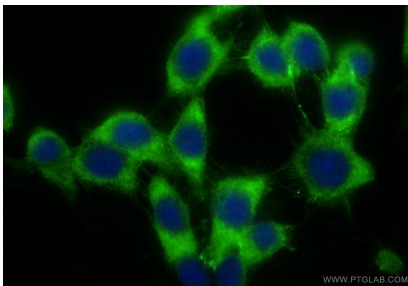
Various lysates were subjected to SDS PAGE followed by western blot with 10518-2-AP (PACSIN2 antibody) at dilution of 1:1000 incubated at room temperature for 1.5 hours.



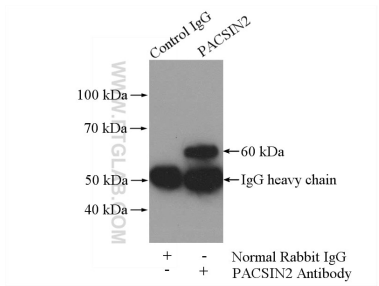
Immunohistochemical analysis of paraffin-embedded human breast cancer tissue slide using 10518-2-AP (PACSIN2 Antibody) at dilution of 1:400 (under 10x lens).



Immunohistochemical analysis of paraffin-embedded human breast cancer tissue slide using 10518-2-AP (PACSIN2 Antibody) at dilution of 1:400 (under 40x lens).



Immunofluorescent analysis of (-20°C Ethanol) fixed NIH/3T3 cells using PACSIN2 antibody (10518-2-AP) at dilution of 1:400 and CoraLite® 488-Conjugated Goat Anti-Rabbit IgG(H+L) (SA00013-2).



IP result of anti-PACSIN2 (IP:10518-2-AP, 4ug; Detection:10518-2-AP 1:500) with NIH/3T3 cells lysate 1200ug.