

For Research Use Only

RABAC1 Polyclonal antibody

Catalog Number: 10542-1-AP **3 Publications**



Basic Information

Catalog Number: 10542-1-AP	GenBank Accession Number: BC008950	Purification Method: Antigen affinity purification
Size: 150ul , Concentration: 400 µg/ml by Nanodrop and 260 µg/ml by Bradford method using BSA as the standard;	GeneID (NCBI): 10567	Recommended Dilutions: WB 1:500-1:1000 IHC 1:20-1:200 IF 1:10-1:100
Source: Rabbit	Full Name: Rab acceptor 1 (prenylated)	
Isotype: IgG	Calculated MW: 21 kDa	
Immunogen Catalog Number: AG0830	Observed MW: 21 kDa	

Applications

Tested Applications: IF, IHC, WB, ELISA	Positive Controls: WB : HEK-293 cells, human pancreas tissue
Cited Applications: IF, IHC, WB	IHC : human pancreas cancer tissue,
Species Specificity: human, mouse, rat	IF : HEK-293 cells,
Cited Species: human, mouse	

Note-IHC: suggested antigen retrieval with TE buffer pH 9.0; (*) Alternatively, antigen retrieval may be performed with citrate buffer pH 6.0

Background Information

Notable Publications

Author	Pubmed ID	Journal	Application
Uchenna Emechebe	34119693	Biochim Biophys Acta Proteins Proteom	WB
Dickison Virginia M VM	23241222	BMC Neurosci	WB,IHC
Ameair Abu Irqeba	33259547	PLoS One	WB,IF

Storage

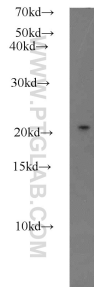
Storage:
Store at -20°C. Stable for one year after shipment.
Storage Buffer:
PBS with 0.02% sodium azide and 50% glycerol pH 7.3.
Aliquoting is unnecessary for -20°C storage

***** 20ul sizes contain 0.1% BSA**

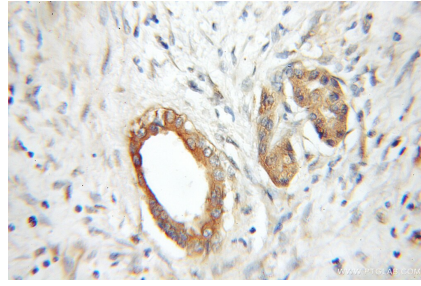
For technical support and original validation data for this product please contact:
T: 1 (888) 4PTGLAB (1-888-478-4522) (toll free in USA), or 1(312) 455-8498 (outside USA)
E: proteintech@ptglab.com
W: ptglab.com

This product is exclusively available under Proteintech Group brand and is not available to purchase from any other manufacturer.

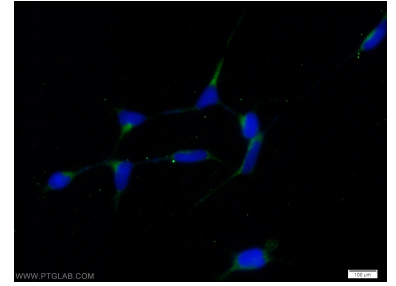
Selected Validation Data



HEK-293 cells were subjected to SDS PAGE followed by western blot with 10542-1-AP (RABAC1 antibody) at dilution of 1:500 incubated at room temperature for 1.5 hours.



Immunohistochemical analysis of paraffin-embedded human pancreas cancer using 10542-1-AP (RABAC1 antibody) at dilution of 1:50 (under 10x lens).



Immunofluorescent analysis of HEK-293 cells using 10542-1-AP (RABAC1 antibody) at dilution of 1:25 and Alexa Fluor 488-conjugated AffiniPure Goat Anti-Rabbit IgG(H+L).