

For Research Use Only

# TRAPA/SSR1 Polyclonal antibody

Catalog Number: 10583-1-AP **9 Publications**



## Basic Information

<b>Catalog Number:</b> 10583-1-AP	<b>GenBank Accession Number:</b> BC007710	<b>Purification Method:</b> Antigen affinity purification
<b>Size:</b> 150ul , Concentration: 300 ug/ml by Nanodrop and 267 ug/ml by Bradford method using BSA as the standard;	<b>GeneID (NCBI):</b> 6745	<b>Recommended Dilutions:</b> WB 1:2000-1:10000
<b>Source:</b> Rabbit	<b>UNIPROT ID:</b> P43307	<b>IHC 1:50-1:500</b>
<b>Isotype:</b> IgG	<b>Full Name:</b> signal sequence receptor, alpha	<b>IF/ICC 1:50-1:500</b>
<b>Immunogen Catalog Number:</b> AG0878	<b>Calculated MW:</b> 34 kDa	
	<b>Observed MW:</b> 34 kDa	

## Applications

<b>Tested Applications:</b> WB, IHC, IF/ICC, ELISA	<b>Positive Controls:</b>
<b>Cited Applications:</b> WB, IHC, IF	<b>WB :</b> COS-7 cells, HepG2 cells, human liver tissue, mouse liver tissue, L02 cells
<b>Species Specificity:</b> human, mouse, monkey	<b>IHC :</b> human ovary tumor tissue, human lung tissue
<b>Cited Species:</b> human, rat, monkey	<b>IF/ICC :</b> HEK-293 cells,
<b>Note-IHC: suggested antigen retrieval with TE buffer pH 9.0; (*) Alternatively, antigen retrieval may be performed with citrate buffer pH 6.0</b>	

## Background Information

TRAPA (translocon-associated protein subunit alpha), also known as SSR1 (signal sequence receptor subunit alpha), is a 34-kDa single-spanning membrane glycoprotein of the endoplasmic reticulum (ER) (PMID: 8050590). It is a part of the tetrameric TRAP complex (TRAP-alpha, TRAP-beta, TRAP-delta and TRAP-gamma) which functions in regulating the retention of ER resident proteins (PMID: 7916687). The TRAP complex is also involved in endoplasmic reticulum-associated degradation (ERAD) (PMID: 17380188).

## Notable Publications

Author	Pubmed ID	Journal	Application
S Orvokki Mattila	34042202	FASEB J	WB
Pengli Zheng	30030520	Cell Res	WB
Chatchai Phoomak	33523898	Sci Adv	WB

## Storage

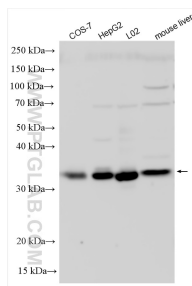
**Storage:**  
Store at -20°C. Stable for one year after shipment.  
**Storage Buffer:**  
PBS with 0.02% sodium azide and 50% glycerol pH 7.3.  
Aliquoting is unnecessary for -20°C storage

\*\*\* 20ul sizes contain 0.1% BSA

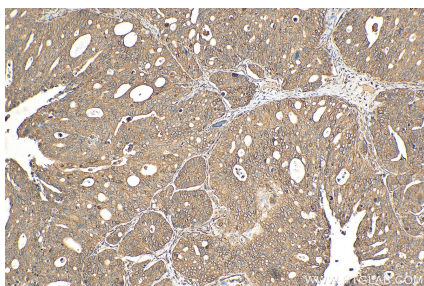
For technical support and original validation data for this product please contact:  
T: 1 (888) 4PTGLAB (1-888-478-4522) (toll free in USA), or 1(312) 455-8498 (outside USA)  
E: proteintech@ptglab.com  
W: ptglab.com

This product is exclusively available under Proteintech Group brand and is not available to purchase from any other manufacturer.

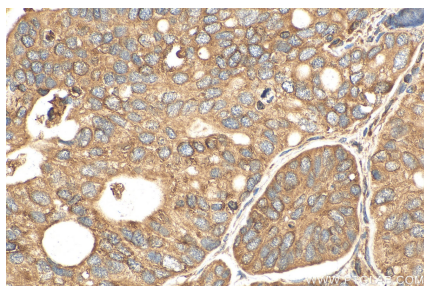
## Selected Validation Data



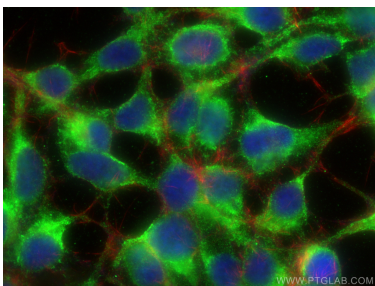
Various lysates were subjected to SDS PAGE followed by western blot with 10583-1-AP (TRAPA/SSR1 antibody) at dilution of 1:5000 incubated at room temperature for 1.5 hours.



Immunohistochemical analysis of paraffin-embedded human ovary tumor tissue slide using 10583-1-AP (TRAPA/SSR1 antibody) at dilution of 1:200 (under 10x lens). Heat mediated antigen retrieval with Tris-EDTA buffer (pH 9.0).



Immunohistochemical analysis of paraffin-embedded human ovary tumor tissue slide using 10583-1-AP (TRAPA/SSR1 antibody) at dilution of 1:200 (under 40x lens). Heat mediated antigen retrieval with Tris-EDTA buffer (pH 9.0).



Immunofluorescent analysis of (-20°C Ethanol) fixed HEK-293 cells using TRAPA/SSR1 antibody (10583-1-AP) at dilution of 1:200 and CoraLite®488-Conjugated Goat Anti-Rabbit IgG(H+L), CL594-phalloidin (red).