

For Research Use Only

# EXTL3 Polyclonal antibody

Catalog Number: 10588-1-AP

2 Publications



## Basic Information

<b>Catalog Number:</b> 10588-1-AP	<b>GenBank Accession Number:</b> BC006363	<b>Purification Method:</b> Antigen affinity purification
<b>Size:</b> 150ul , Concentration: 200 µg/ml by Nanodrop and 133 µg/ml by Bradford method using BSA as the standard;	<b>GeneID (NCBI):</b> 2137	<b>Recommended Dilutions:</b> IHC 1:20-1:200 IF/ICC 1:50-1:500
<b>Source:</b> Rabbit	<b>UNIPROT ID:</b> O43909	
<b>Isotype:</b> IgG	<b>Full Name:</b> exostoses (multiple)-like 3	
<b>Immunogen Catalog Number:</b> AG0936	<b>Calculated MW:</b> 105 kDa	
	<b>Observed MW:</b> 65 kDa	

## Applications

<b>Tested Applications:</b> IHC, IF/ICC, ELISA	<b>Positive Controls:</b> IHC : human colon cancer tissue, IF/ICC : HepG2 cells,
<b>Cited Applications:</b> WB, IF	
<b>Species Specificity:</b> human	
<b>Cited Species:</b> human, mouse	
<b>Note-IHC: suggested antigen retrieval with TE buffer pH 9.0; (*) Alternatively, antigen retrieval may be performed with citrate buffer pH 6.0</b>	

## Background Information

Exostosin like glycosyltransferase 3 (EXTL3), also known as RPR, is located at chromosome 8p21.1 and composed of 919 amino acids, making it the longest member of the EXT family (PMID: 35676258). EXTL3 encodes the glycosyltransferases responsible for the biosynthesis of the backbone structure of heparan sulfate (HS) (PMID: 24128412). EXTL3 has been identified as a receptor molecule for regenerating islet-derived (REG) protein ligands, which have been shown to stimulate islet  $\beta$ -cell growth. Mutations in EXTL3 could lead to skeletal dysplasia, developmental delay, and severe immune deficiency (PMID: 28148688). The predicted molecular weight is 105 kDa, but we detected the band at 65 kDa perhaps due to alternative splicing (PMID: 14618397).

## Notable Publications

Author	Pubmed ID	Journal	Application
Ze-Hua Xu	37531162	Ann N Y Acad Sci	WB,IF
Levetan Claressa S CS	19158046	Endocr Pract	WB,IF

## Storage

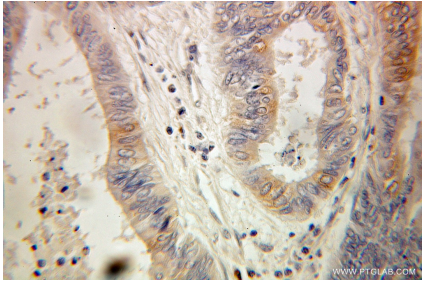
**Storage:**  
Store at -20°C. Stable for one year after shipment.  
**Storage Buffer:**  
PBS with 0.02% sodium azide and 50% glycerol pH 7.3.  
Aliquoting is unnecessary for -20°C storage

\*\*\* 20ul sizes contain 0.1% BSA

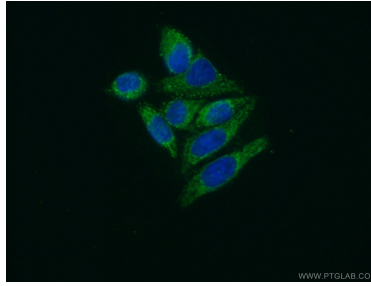
For technical support and original validation data for this product please contact:  
T: 1 (888) 4PTGLAB (1-888-478-4522) (toll free in USA), or 1(312) 455-8498 (outside USA)  
E: proteintech@ptglab.com  
W: ptglab.com

This product is exclusively available under Proteintech Group brand and is not available to purchase from any other manufacturer.

## Selected Validation Data



Immunohistochemical analysis of paraffin-embedded human colon cancer using 10588-1-AP (EXTL3 antibody) at dilution of 1:100 (under 25x lens).



Immunofluorescent analysis of (10% Formaldehyde) fixed HepG2 cells using 10588-1-AP (EXTL3 antibody) at dilution of 1:50 and Alexa Fluor 488-conjugated AffiniPure Goat Anti-Rabbit IgG(H+L).