

For Research Use Only

PLCD4 Polyclonal antibody

Catalog Number: 10589-2-AP



Basic Information

| | | |
|---|---|--|
| Catalog Number: 10589-2-AP | GenBank Accession Number: BC006355 | Purification Method: Antigen affinity purification |
| Size: 150ul , Concentration: 400 µg/ml by Nanodrop; | GeneID (NCBI): 84812 | Recommended Dilutions: WB 1:500-1:2000 IHC 1:50-1:500 |
| Source: Rabbit | Full Name: phospholipase C, delta 4 | |
| Isotype: IgG | Calculated MW: 85-90 kDa | |
| Immunogen Catalog Number: AG0937 | Observed MW: 100-110 kDa | |

Applications

Tested Applications:

IHC, WB, ELISA

Species Specificity:

human, mouse, rat

Note-IHC: suggested antigen retrieval with TE buffer pH 9.0; (*) Alternatively, antigen retrieval may be performed with citrate buffer pH 6.0

Positive Controls:

WB : mouse skeletal muscle tissue, rat skeletal muscle tissue

IHC : human pancreas cancer tissue,

Background Information

PLCD4 is a member of the delta class of phospholipase C enzymes. Phospholipase C enzymes play a critical role in many cellular processes by hydrolyzing phosphatidylinositol 4,5-bisphosphate into two intracellular second messengers, inositol 1,4,5-trisphosphate and diacylglycerol. Expression of this gene may be a marker for cancer.

Storage

Storage:

Store at -20°C. Stable for one year after shipment.

Storage Buffer:

PBS with 0.02% sodium azide and 50% glycerol pH 7.3.

Aliquoting is unnecessary for -20°C storage

*** 20ul sizes contain 0.1% BSA

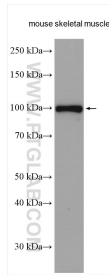
For technical support and original validation data for this product please contact:

T: 1 (888) 4PTGLAB (1-888-478-4522) (toll free in USA), or 1(312) 455-8498 (outside USA)

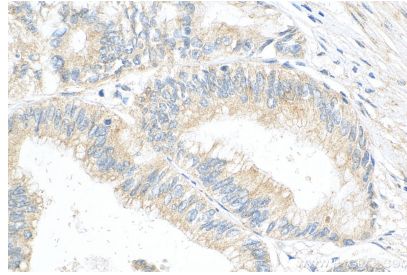
E: proteintech@ptglab.com
W: ptglab.com

This product is exclusively available under Proteintech Group brand and is not available to purchase from any other manufacturer.

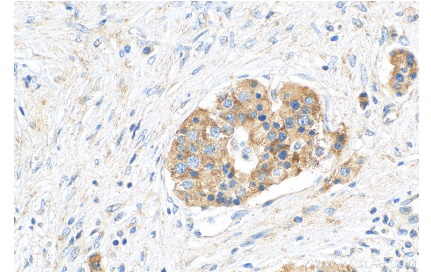
Selected Validation Data



mouse skeletal muscle tissue were subjected to SDS PAGE followed by western blot with 10589-2-AP (PLCD4 antibody) at dilution of 1:1000 incubated at room temperature for 1.5 hours.



Immunohistochemical analysis of paraffin-embedded human pancreas cancer tissue slide using 10589-2-AP (PLCD4 antibody) at dilution of 1:200 (under 10x lens). Heat mediated antigen retrieval with Tris-EDTA buffer (pH 9.0).



Immunohistochemical analysis of paraffin-embedded human pancreas cancer tissue slide using 10589-2-AP (PLCD4 antibody) at dilution of 1:200 (under 40x lens). Heat mediated antigen retrieval with Tris-EDTA buffer (pH 9.0).