

For Research Use Only

# PACSIN3 Polyclonal antibody

Catalog Number: 10639-1-AP

1 Publications



## Basic Information

### Catalog Number:

10639-1-AP

### Size:

150ul, Concentration: 600 ug/ml by Nanodrop and 320 ug/ml by Bradford method using BSA as the standard;

### Source:

Rabbit

### Isotype:

IgG

### Immunogen Catalog Number:

AG1006

### GenBank Accession Number:

BC007914

### GeneID (NCBI):

29763

### UNIPROT ID:

Q9UKS6

### Full Name:

protein kinase C and casein kinase substrate in neurons 3

### Calculated MW:

48 kDa

### Observed MW:

48 kDa

### Purification Method:

Antigen affinity purification

### Recommended Dilutions:

WB 1:500-1:1000

IHC 1:20-1:200

IF/ICC 1:10-1:100

## Applications

### Tested Applications:

WB, IHC, IF/ICC, ELISA

### Cited Applications:

WB

### Species Specificity:

human, mouse, rat

### Cited Species:

human

**Note-IHC: suggested antigen retrieval with TE buffer pH 9.0; (\*) Alternatively, antigen retrieval may be performed with citrate buffer pH 6.0**

### Positive Controls:

**WB** : HeLa cells, mouse heart tissue, mouse liver tissue, mouse lung tissue, mouse skeletal muscle tissue, rat brain tissue

**IHC** : human breast cancer tissue, human heart tissue

**IF/ICC** : HeLa cells,

## Notable Publications

Author	Pubmed ID	Journal	Application
Felix Distelmaier	38637313	Brain	WB

## Storage

### Storage:

Store at -20°C. Stable for one year after shipment.

### Storage Buffer:

PBS with 0.02% sodium azide and 50% glycerol pH 7.3.

Aliquoting is unnecessary for -20°C storage

\*\*\* 20ul sizes contain 0.1% BSA

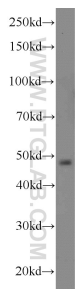
For technical support and original validation data for this product please contact:

T: 1 (888) 4PTGLAB (1-888-478-4522) (toll free in USA), or 1(312) 455-8498 (outside USA)

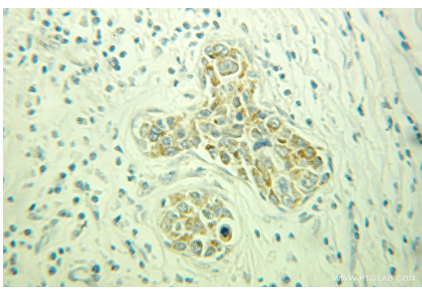
E: [proteintech@ptglab.com](mailto:proteintech@ptglab.com)  
W: [ptglab.com](http://ptglab.com)

This product is exclusively available under Proteintech Group brand and is not available to purchase from any other manufacturer.

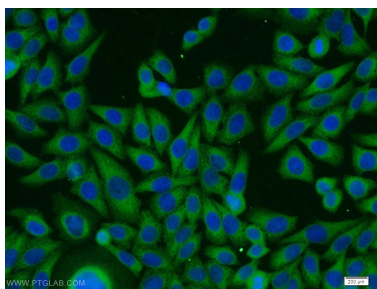
Selected Validation Data



HeLa cells were subjected to SDS PAGE followed by western blot with 10639-1-AP (PAC SIN3 antibody) at dilution of 1:1000 incubated at room temperature for 1.5 hours.



Immunohistochemical analysis of paraffin-embedded human breast cancer using 10639-1-AP (PAC SIN3 antibody) at dilution of 1:100 (under 25x lens).



Immunofluorescent analysis of HeLa cells using 10639-1-AP (PAC SIN3 antibody) at dilution of 1:25 and Alexa Fluor 488-conjugated Goat Anti-Rabbit IgG(H+L).