

CDC25B Polyclonal antibody

Catalog Number: 10644-1-AP

2 Publications

Basic Information

Catalog Number:

10644-1-AP

Size:

150ul , Concentration: 133 µg/ml by Bradford method using BSA as the standard;

Source:

Rabbit

Isotype:

IgG

Immunogen Catalog Number:

AG0994

GenBank Accession Number:

BC006395

GeneID (NCBI):

994

UNIPROT ID:

P30305

Full Name:

cell division cycle 25 homolog B (S. pombe)

Calculated MW:

65 kDa

Observed MW:

60-70 kDa

Purification Method:

Antigen affinity purification

Recommended Dilutions:

WB 1:200-1:1000

IP 0.5-4.0 ug for 1.0-3.0 mg of total protein lysate

IHC 1:20-1:200

Applications

Tested Applications:

WB, IP, IHC, ELISA

Cited Applications:

WB, IF

Species Specificity:

human, mouse

Cited Species:

mouse

Note-IHC: suggested antigen retrieval with TE buffer pH 9.0; (*) Alternatively, antigen retrieval may be performed with citrate buffer pH 6.0

Positive Controls:

WB : mouse liver tissue, Jurkat cells, mouse brain tissue, Raji cells

IP : mouse liver tissue,

IHC : human lymphoma tissue,

Background Information

CDC25B, also named as CDC25HU2, belongs to the MPI phosphatase family. It is a tyrosine protein phosphatase which functions as a dosage-dependent inducer of mitotic progression. CDC25B directly dephosphorylates CDK1 and stimulates its kinase activity. The three isoforms seem to have a different level of activity. In Jurkat cell, this antibody recognized 2 bands: 60kd(isoform 2, CDC25B2) and 70kd(isoform 4 of CDC25B).

Notable Publications

Author	Pubmed ID	Journal	Application
Alaa A Eisa	31640562	BMC Dev Biol	IF
Santanu De	23547714	BMC Dev Biol	WB, IF

Storage

Storage:

Store at -20°C. Stable for one year after shipment.

Storage Buffer:

PBS with 0.02% sodium azide and 50% glycerol pH 7.3.

Aliquoting is unnecessary for -20°C storage

*** 20ul sizes contain 0.1% BSA

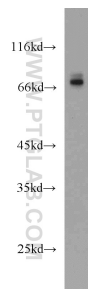
For technical support and original validation data for this product please contact:

T: 1 (888) 4PTGLAB (1-888-478-4522) (toll free in USA), or 1(312) 455-8498 (outside USA)

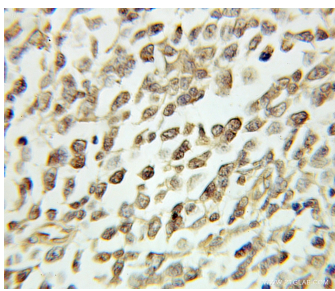
E: proteintech@ptglab.com
W: ptglab.com

This product is exclusively available under Proteintech Group brand and is not available to purchase from any other manufacturer.

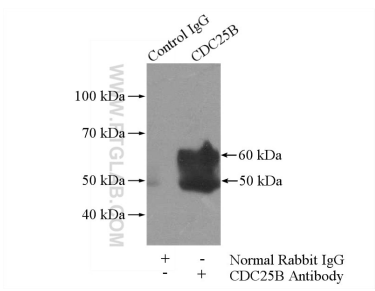
Selected Validation Data



mouse liver tissue were subjected to SDS PAGE followed by western blot with 10644-1-AP (CDC25B antibody) at dilution of 1:300 incubated at room temperature for 1.5 hours.



Immunohistochemical analysis of paraffin-embedded human lymphoma using 10644-1-AP (CDC25B antibody) at dilution of 1:100 (under 10x lens).



IP result of anti-CDC25B (IP:10644-1-AP, 4ug; Detection:10644-1-AP 1:300) with mouse liver tissue lysate 4000ug.