

For Research Use Only

CARD9 Polyclonal antibody

Catalog Number: 10669-1-AP

Featured Product

11 Publications



Basic Information

Catalog Number:

10669-1-AP

Size:

150ul, Concentration: 350 ug/ml by Nanodrop and 300 ug/ml by Bradford method using BSA as the standard;

Source:

Rabbit

Isotype:

IgG

Immunogen Catalog Number:

AG1057

GenBank Accession Number:

BC008877

GeneID (NCBI):

64170

UNIPROT ID:

Q9H257

Full Name:

caspase recruitment domain family, member 9

Calculated MW:

62 kDa

Observed MW:

55-62 kDa

Purification Method:

Antigen affinity purification

Recommended Dilutions:

WB 1:500-1:3000

Applications

Tested Applications:

WB, ELISA

Cited Applications:

WB, IP

Species Specificity:

human, mouse, rat

Cited Species:

human, mouse

Positive Controls:

WB : HL-60 cells, THP-1 cells

Background Information

CARD9, a member of the caspase recruitment domain (CARD) protein family, plays an important regulatory role in cell apoptosis. Defects in CARD9 are the cause of familial candidiasis type 2 (CANDF2) characterized by impaired clearance of fungal infections and results in colonization and infections of the mucosa or skin, predominantly with *Candida albicans*. CARD9 is highly expressed in spleen and regulate activation of NF-kappa-B by interaction with positive regulator of apoptosis BCL10 via the CARD domain.

Notable Publications

Author	Pubmed ID	Journal	Application
Carlos A Arango-Franco	30264381	J Clin Immunol	WB
Nikolaus Rieber	27777981	JCI Insight	WB
Xinyan Wu	34721438	Front Immunol	WB

Storage

Storage:

Store at -20°C. Stable for one year after shipment.

Storage Buffer:

PBS with 0.02% sodium azide and 50% glycerol pH 7.3.

Aliquoting is unnecessary for -20°C storage

*** 20ul sizes contain 0.1% BSA

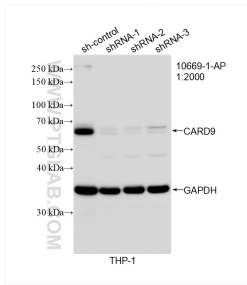
For technical support and original validation data for this product please contact:

T: 1 (888) 4PTGLAB (1-888-478-4522) (toll free in USA), or 1(312) 455-8498 (outside USA)

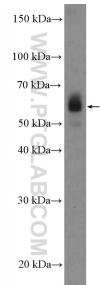
E: proteintech@ptglab.com
W: ptglab.com

This product is exclusively available under Proteintech Group brand and is not available to purchase from any other manufacturer.

Selected Validation Data



WB result of CARD9 antibody (10669-1-AP; 1:1000; incubated at room temperature for 1.5 hours) with sh-Control and sh-CARD9 transfected THP-1 cells.



HL-60 cells were subjected to SDS PAGE followed by western blot with 10669-1-AP (CARD9 Antibody) at dilution of 1:1500 incubated at room temperature for 1.5 hours.