

For Research Use Only

SPHK1 Polyclonal antibody

Catalog Number: 10670-1-AP

Featured Product

37 Publications



Basic Information

Catalog Number: 10670-1-AP	GenBank Accession Number: BC008040	Purification Method: Antigen affinity purification
Size: 150ul , Concentration: 550 µg/ml by Nanodrop;	GeneID (NCBI): 8877	Recommended Dilutions: WB 1:500-1:2000 IP 0.5-4.0 ug for 1.0-3.0 mg of total protein lysate IHC 1:50-1:500
Source: Rabbit	Full Name: sphingosine kinase 1	
Isotype: IgG	Calculated MW: 43 kDa	
Immunogen Catalog Number: AG1051	Observed MW: 42 kDa	

Applications

Tested Applications: IHC, IP, WB, ELISA	Positive Controls:
Cited Applications: IF, IHC, IP, WB	WB : HeLa cells, HepG2 cells, L02 cells, MCF-7 cells
Species Specificity: human, mouse, rat	IP : L02 cells,
Cited Species: human, rat, mouse	IHC : human breast cancer tissue, human colon cancer tissue
Note-IHC: suggested antigen retrieval with TE buffer pH 9.0; (*) Alternatively, antigen retrieval may be performed with citrate buffer pH 6.0	

Background Information

SPHK(Sphingosine kinase 1) is also named as SPHK, SPK.It catalyzes the phosphorylation of sphingosine to form sphingosine 1-phosphate (SPP), a lipid mediator with both intra- and extracellular functions and is precariously perched at the balance point between progrowth and pro-death signalling in the cell.Endogenous SPHK1 purified from placenta has identical enzymatic characteristics, suggesting posttranslational modification does not effect functional properties(PMID:10947957).It has 2 isoforms produced by alternative splicing and can form the oligomeric structure(PMID:22335554).

Notable Publications

Author	Pubmed ID	Journal	Application
ZIJIA QIN	34549307	Int J Mol Med	WB
Pei-Rong Gan	36108735	Eur J Pharmacol	WB
Teresa Sanchez	12954648	J Biol Chem	WB

Storage

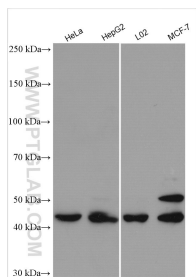
Storage:
Store at -20°C. Stable for one year after shipment.
Storage Buffer:
PBS with 0.02% sodium azide and 50% glycerol pH 7.3.
Aliquoting is unnecessary for -20°C storage

*** 20ul sizes contain 0.1% BSA

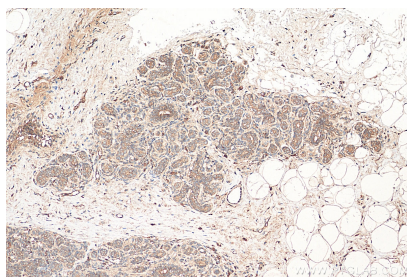
For technical support and original validation data for this product please contact:
T: 1 (888) 4PTGLAB (1-888-478-4522) (toll free in USA), or 1(312) 455-8498 (outside USA)
E: proteintech@ptglab.com
W: ptglab.com

This product is exclusively available under Proteintech Group brand and is not available to purchase from any other manufacturer.

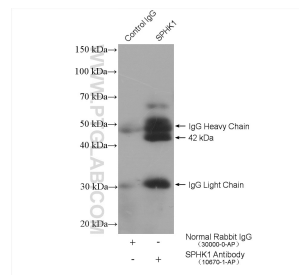
Selected Validation Data



Various lysates were subjected to SDS PAGE followed by western blot with 10670-1-AP (SPHK1 antibody) at dilution of 1:1000 incubated at room temperature for 1.5 hours.



Immunohistochemical analysis of paraffin-embedded human breast cancer tissue slide using 10670-1-AP (SPHK1 antibody) at dilution of 1:200 (under 10x lens). Heat mediated antigen retrieval with Tris-EDTA buffer (pH 9.0).



IP result of anti-SPHK1 (IP:10670-1-AP, 4ug;
Detection:10670-1-AP 1:300) with L02 cells lysate
2560 ug.