

For Research Use Only

OSTF1 Polyclonal antibody

Catalog Number: 10671-1-AP

1 Publications



Basic Information

Catalog Number: 10671-1-AP	GenBank Accession Number: BC007459	Purification Method: Antigen affinity purification
Size: 150ul , Concentration: 400 ug/ml by Nanodrop and 200 ug/ml by Bradford method using BSA as the standard;	GeneID (NCBI): 26578	Recommended Dilutions: WB: 1:1000-1:4000
Source: Rabbit	UNIPROT ID: Q92882	IHC: 1:20-1:200
Isotype: IgG	Full Name: osteoclast stimulating factor 1	IF/ICC: 1:200-1:800
Immunogen Catalog Number: AG1072	Calculated MW: 28 kDa	
	Observed MW: 28 kDa	

Applications

Tested Applications: WB, IHC, IF/ICC, ELISA	Positive Controls: WB : HeLa cells, C2C12 cells, HepG2 cells, U-937 cells
Cited Applications: WB, IHC	IHC : human breast cancer tissue, human kidney tissue, human lung tissue, human placenta tissue, human testis tissue
Species Specificity: human, mouse, rat	IF/ICC : A431 cells,
Cited Species: human, rat	
Note-IHC: suggested antigen retrieval with TE buffer pH 9.0; (*) Alternatively, antigen retrieval may be performed with citrate buffer pH 6.0	

Background Information

OSTF1 (Osteoclast-stimulating factor-1) is an intracellular protein produced by osteoclasts that indirectly induces osteoclast formation and bone resorption. It induces bone resorption, acting probably through a signaling cascade which results in the secretion of factor(s) enhancing osteoclast formation and activity

Notable Publications

Author	Pubmed ID	Journal	Application
Bin Hu	38699012	Heliyon	WB,IHC

Storage

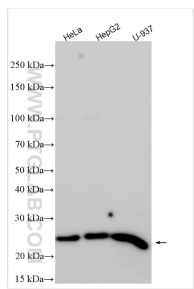
Storage:
Store at -20°C. Stable for one year after shipment.
Storage Buffer:
PBS with 0.02% sodium azide and 50% glycerol, pH7.3
Aliquoting is unnecessary for -20°C storage

*** 20ul sizes contain 0.1% BSA

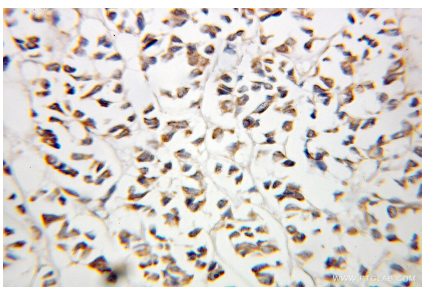
For technical support and original validation data for this product please contact:
T: 1 (888) 4PTGLAB (1-888-478-4522) (toll free in USA), or 1(312) 455-8498 (outside USA)
E: proteintech@ptglab.com
W: ptglab.com

This product is exclusively available under Proteintech Group brand and is not available to purchase from any other manufacturer.

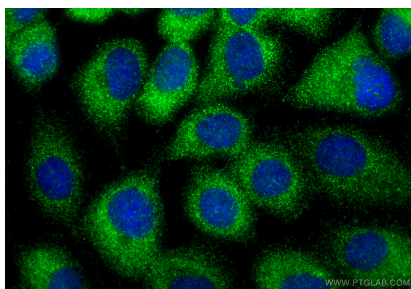
Selected Validation Data



Various lysates were subjected to SDS PAGE followed by western blot with 10671-1-AP (OSTF1 antibody) at dilution of 1:2000 incubated at room temperature for 1.5 hours.



Immunohistochemical analysis of paraffin-embedded human breast cancer using 10671-1-AP (OSTF1 antibody) at dilution of 1:100 (under 25x lens).



Immunofluorescent analysis of (-20°C Methanol) fixed A431 cells using OSTF1 antibody (10671-1-AP) at dilution of 1:400 and CoraLite@488-Conjugated Goat Anti-Rabbit IgG(H+L) (SA00013-2).