

For Research Use Only

Protein C inhibitor Polyclonal antibody

Catalog Number: 10673-1-AP

6 Publications



Basic Information

Catalog Number: 10673-1-AP	GenBank Accession Number: BC008915	Purification Method: Antigen affinity purification
Size: 150ul, Concentration: 200 ug/ml by Nanodrop and 133 ug/ml by Bradford method using BSA as the standard;	GeneID (NCBI): 5104	Recommended Dilutions: WB 1:500-1:600 IHC 1:20-1:200 IF/ICC 1:50-1:500
Source: Rabbit	UNIPROT ID: P05154	
Isotype: IgG	Full Name: serpin peptidase inhibitor, clade A (alpha-1 antiproteinase, antitrypsin), member 5	
Immunogen Catalog Number: AG1078	Calculated MW: 46 kDa	
	Observed MW: 46 kDa	

Applications

Tested Applications: WB, IHC, IF/ICC, ELISA	Positive Controls: WB : HepG2 cells, A549 cells, HeLa cells, Jurkat cells, L02 cells, PC-3 cells IHC : human ovary tumor tissue, human breast cancer tissue, human ovary cancer tissue, human testis tissue IF/ICC : HepG2 cells,
Cited Applications: WB, IHC, CoIP, ELISA	
Species Specificity: human	
Cited Species: human, rat	

Note-IHC: suggested antigen retrieval with TE buffer pH 9.0; (*) Alternatively, antigen retrieval may be performed with citrate buffer pH 6.0

Background Information

SERPINA5 (also called Protein C Inhibitor, PCI) is a serpin type of serine protease inhibitor that is found in many tissues and fluids in human, including blood plasma, seminal plasma and urine. PCI found in blood originates from the liver and is capable of inhibiting several serine proteases involved in the regulation of coagulation and fibrinolysis, including activated protein C, thrombin, factor Xa, various kallikreins and plasminogen activators. PCI has been found to have antimicrobial and antitumor properties and thus appears to be a multi-functional protein.

Notable Publications

Author	Pubmed ID	Journal	Application
Tengjiao Zhu	34964303	Proteomics Clin Appl	IHC
Meiyang Fan	36000536	J Cell Mol Med	WB, CoIP
Qizhao Tan	38206579	J Proteome Res	IHC

Storage

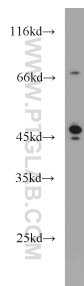
Storage:
Store at -20°C. Stable for one year after shipment.
Storage Buffer:
PBS with 0.02% sodium azide and 50% glycerol pH 7.3.
Aliquoting is unnecessary for -20°C storage

*** 20ul sizes contain 0.1% BSA

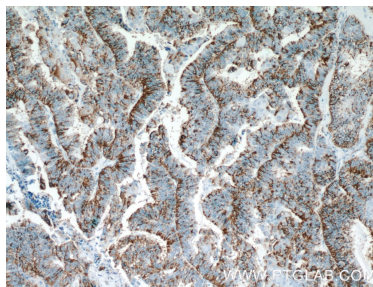
For technical support and original validation data for this product please contact:
T: 1 (888) 4PTGLAB (1-888-478-4522) (toll free in USA), or 1(312) 455-8498 (outside USA)
E: proteintech@ptglab.com
W: ptglab.com

This product is exclusively available under Proteintech Group brand and is not available to purchase from any other manufacturer.

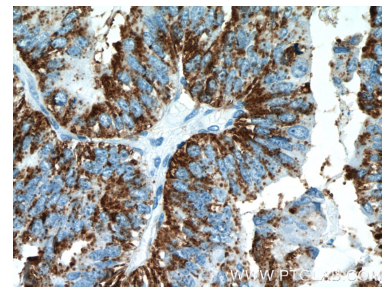
Selected Validation Data



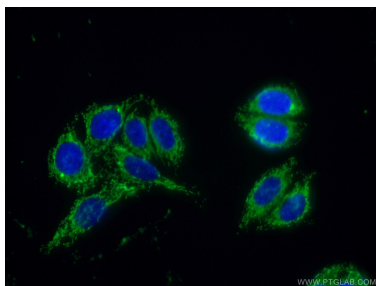
HepG2 cells were subjected to SDS PAGE followed by western blot with 10673-1-AP (Protein C inhibitor antibody) at dilution of 1:1000 incubated at room temperature for 1.5 hours.



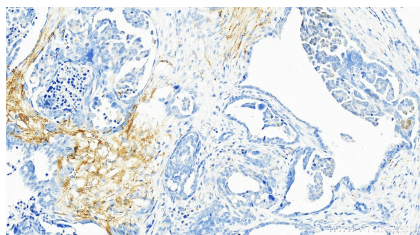
Immunohistochemical analysis of paraffin-embedded human ovary tumor tissue slide using 10673-1-AP (Protein C inhibitor antibody at dilution of 1:50 (under 10x lens).



Immunohistochemical analysis of paraffin-embedded human ovary tumor tissue slide using 10673-1-AP (Protein C inhibitor antibody at dilution of 1:50 (under 40x lens).



Immunofluorescent analysis of (10% Formaldehyde) fixed HepG2 cells using 10673-1-AP (Protein C inhibitor antibody) at dilution of 1:50 and Alexa Fluor 488-conjugated AffiniPure Goat Anti-Rabbit IgG(H+L).



Immunohistochemical analysis of paraffin-embedded human ovarian cancer slide using 10673-1-AP (Protein C inhibitor antibody) at dilution of 1:800 (under 20x lens). Heat mediated antigen retrieval with Tris-EDTA buffer (pH 9.0).