

KLK3/PSA Polyclonal antibody

Catalog Number: 10679-1-AP

26 Publications

Basic Information

Catalog Number:

10679-1-AP

Size:

150ul , Concentration: 700 ug/ml by Nanodrop;

Source:

Rabbit

Isotype:

IgG

Immunogen Catalog Number:

AG1060

GenBank Accession Number:

BC005307

GeneID (NCBI):

354

UNIPROT ID:

P07288

Full Name:

kallikrein-related peptidase 3

Calculated MW:

29 kDa

Observed MW:

30-34 kDa

Purification Method:

Antigen affinity purification

Recommended Dilutions:

WB 1:1000-1:8000

IP 0.5-4.0 ug for 1.0-3.0 mg of total protein lysate

IHC 1:100-1:400

IF/ICC 1:50-1:500

Applications

Tested Applications:

WB, IHC, IF/ICC, IP, ELISA

Cited Applications:

WB, IHC, IF, IP

Species Specificity:

human

Cited Species:

human, mouse, rat

Note-IHC: suggested antigen retrieval with TE buffer pH 9.0; (*) Alternatively, antigen retrieval may be performed with citrate buffer pH 6.0

Positive Controls:

WB : LNCaP cells, Transfected HEK-293 cells

IP : LNCaP cells,

IHC : human prostate cancer tissue,

IF/ICC : LNCaP cells,

Background Information

Kallikreins are a subgroup of serine proteases having diverse physiological functions. Growing evidence suggests that many kallikreins are implicated in carcinogenesis and some have potential as novel cancer and other disease biomarkers. kallikrein-related peptidase 3, which is also called PSA (prostate-specific antigen) in the clinical setting, is useful in the diagnosis and monitoring of prostatic carcinoma. KLK3 has 5 isoforms produced by alternative splicing.

Notable Publications

Author	Pubmed ID	Journal	Application
Yalcin Erzurumlu	36445513	Mol Biol Rep	WB
Yalan Xu	36434710	Stem Cell Res Ther	IHC,IF
Hui Ma	31127646	J Cell Biochem	IHC

Storage

Storage:

Store at -20°C. Stable for one year after shipment.

Storage Buffer:

PBS with 0.02% sodium azide and 50% glycerol

Aliquoting is unnecessary for -20°C storage

*** 20ul sizes contain 0.1% BSA

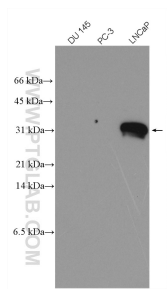
For technical support and original validation data for this product please contact:

T: 1 (888) 4PTGLAB (1-888-478-4522) (toll free in USA), or 1(312) 455-8498 (outside USA)

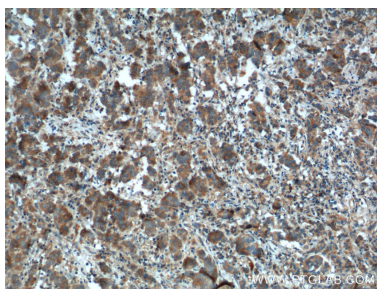
E: proteintech@ptglab.com
W: ptglab.com

This product is exclusively available under Proteintech Group brand and is not available to purchase from any other manufacturer.

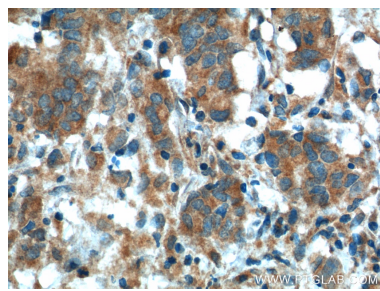
Selected Validation Data



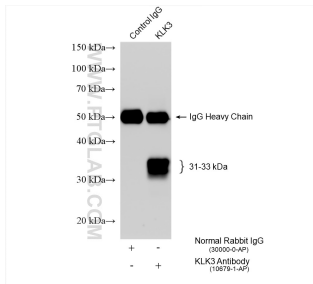
DU 145(PSA-), PC-3(PSA-) and LNCaP (PSA+) cell lysates were subjected to SDS PAGE followed by western blot with 10679-1-AP (KLK3/PSA antibody) at dilution of 1:4000 incubated at room temperature for 1.5 hours.



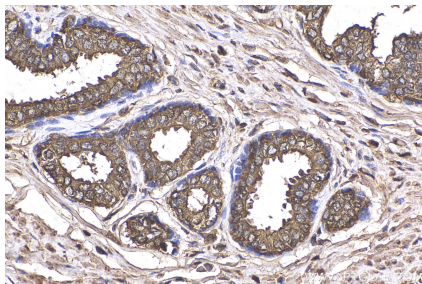
Immunohistochemical analysis of paraffin-embedded human prostate cancer tissue slide using 10679-1-AP (KLK3/PSA antibody) at dilution of 1:200 (under 10x lens). Heat mediated antigen retrieval with Tris-EDTA buffer (pH 9.0).



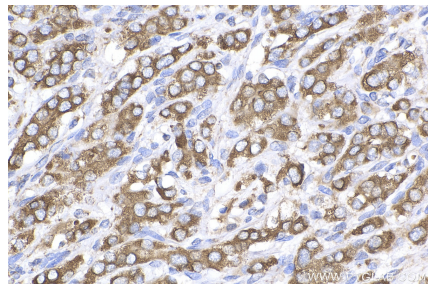
Immunohistochemical analysis of paraffin-embedded human prostate cancer tissue slide using 10679-1-AP (KLK3/PSA antibody) at dilution of 1:200 (under 40x lens). Heat mediated antigen retrieval with Tris-EDTA buffer (pH 9.0).



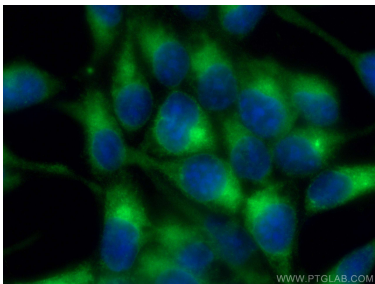
IP result of anti-KLK3/PSA (IP:10679-1-AP, 4ug; Detection:10679-1-AP 1:10000) with LNCaP cells lysate 1520 ug.



Immunohistochemical analysis of paraffin-embedded human prostate cancer tissue slide using 10679-1-AP (KLK3/PSA antibody) at dilution of 1:500 (under 40x lens). Heat mediated antigen retrieval with Tris-EDTA buffer (pH 9.0).



Immunohistochemical analysis of paraffin-embedded human prostate cancer tissue slide using 10679-1-AP (KLK3/PSA antibody) at dilution of 1:500 (under 40x lens). Heat mediated antigen retrieval with Tris-EDTA buffer (pH 9.0).



Immunofluorescent analysis of (-20°C Methanol) fixed LNCaP cells using KLK3/PSA antibody (10679-1-AP) at dilution of 1:200 and CoraLite®488-Conjugated Goat Anti-Rabbit IgG(H+L).