

For Research Use Only

# CDC23 Polyclonal antibody

Catalog Number: 10683-1-AP



## Basic Information

<b>Catalog Number:</b> 10683-1-AP	<b>GenBank Accession Number:</b> BC005258	<b>Purification Method:</b> Antigen affinity purification
<b>Size:</b> 150ul , Concentration: 600 µg/ml by Nanodrop and 253 µg/ml by Bradford method using BSA as the standard;	<b>GeneID (NCBI):</b> 8697	<b>Recommended Dilutions:</b> WB 1:500-1:3000
<b>Source:</b> Rabbit	<b>Full Name:</b> cell division cycle 23 homolog (S. cerevisiae)	
<b>Isotype:</b> IgG	<b>Calculated MW:</b> 68 kDa	
<b>Immunogen Catalog Number:</b> AG1068	<b>Observed MW:</b> 69 kDa	

## Applications

<b>Tested Applications:</b> WB, ELISA	<b>Positive Controls:</b> WB : MOLT-4 cells, HEK-293 cells, Jurkat cells, K-562 cells, Caco-2 cells
<b>Species Specificity:</b> human, mouse, rat	

## Background Information

CDC23 (cell division cycle protein 23 homolog) is also named ANAPC8 and belongs to the APC8/CDC23 family. It is a subunit of the anaphase-promoting complex (APC), which functions at the metaphase-to-anaphase transition of the cell cycle and is regulated by spindle checkpoint proteins. It can be phosphorylated and the phosphorylation of Thr-562 occurs specifically during mitosis (PMID:19690332). It has 3 isoforms produced by alternative splicing with the molecular weight of 69 kDa, 17 kDa, and 56 kDa.

## Storage

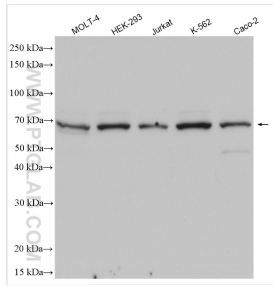
**Storage:**  
Store at -20°C. Stable for one year after shipment.  
**Storage Buffer:**  
PBS with 0.02% sodium azide and 50% glycerol pH 7.3.  
Aliquoting is unnecessary for -20°C storage

\*\*\* 20ul sizes contain 0.1% BSA

For technical support and original validation data for this product please contact:  
T: 1 (888) 4PTGLAB (1-888-478-4522) (toll free in USA), or 1(312) 455-8498 (outside USA)  
E: proteintech@ptglab.com  
W: ptglab.com

This product is exclusively available under Proteintech Group brand and is not available to purchase from any other manufacturer.

## Selected Validation Data



Various lysates were subjected to SDS PAGE followed by western blot with 10683-1-AP (CDC23 antibody) at dilution of 1:1500 incubated at room temperature for 1.5 hours.