

For Research Use Only

ETV4 Polyclonal antibody

Catalog Number: 10684-1-AP

Featured Product

25 Publications



Basic Information

Catalog Number:

10684-1-AP

Size:

150ul, Concentration: 600 ug/ml by Nanodrop;

Source:

Rabbit

Isotype:

IgG

Immunogen Catalog Number:

AG0984

GenBank Accession Number:

BC007242

GeneID (NCBI):

2118

UNIPROT ID:

P43268

Full Name:

ets variant 4

Calculated MW:

54 kDa

Observed MW:

61-65 kDa

Purification Method:

Antigen affinity purification

Recommended Dilutions:

WB 1:500-1:1000

Applications

Tested Applications:

WB, ELISA

Cited Applications:

WB, IHC, IF, ChIP

Species Specificity:

human, mouse, rat

Cited Species:

human, mouse, rat, chicken

Positive Controls:

WB : mouse heart tissue, BxPC-3 cells

Background Information

ETS translocation variant 4 (ETV4), also named as E1A-F or PEA3, is 484 amino acid protein, which contains one ETS DNA-binding domain and belongs to the ETS family. The calculated molecular weight of ETV4 protein is 54 kDa, but the phosphorylated ETV4 is a 54-61 kDa protein. ETV4 as a transcription activator localizes in the nucleus and binds to the enhancer of the adenovirus E1A gene.

Notable Publications

Author	Pubmed ID	Journal	Application
Aoi Komatsu	34685592	Cells	WB,IHC
Guangying Yang	35682694	Int J Mol Sci	WB,IF
Eunice Cho	33789117	Cell Rep	WB

Storage

Storage:

Store at -20°C. Stable for one year after shipment.

Storage Buffer:

PBS with 0.02% sodium azide and 50% glycerol pH 7.3.

Aliquoting is unnecessary for -20°C storage

*** 20ul sizes contain 0.1% BSA

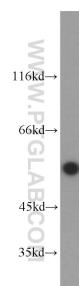
For technical support and original validation data for this product please contact:

T: 1 (888) 4PTGLAB (1-888-478-4522) (toll free in USA), or 1(312) 455-8498 (outside USA)

E: proteintech@ptglab.com
W: ptglab.com

This product is exclusively available under Proteintech Group brand and is not available to purchase from any other manufacturer.

Selected Validation Data



mouse heart tissue were subjected to SDS PAGE followed by western blot with 10684-1-AP (ETV4 antibody) at dilution of 1:500 incubated at room temperature for 1.5 hours.