

For Research Use Only

MMS2 Polyclonal antibody

Catalog Number: 10689-1-AP

2 Publications



Basic Information

Catalog Number:

10689-1-AP

Size:

150ul, Concentration: 800 ug/ml by Nanodrop and 300 ug/ml by Bradford method using BSA as the standard;

Source:

Rabbit

Isotype:

IgG

Immunogen Catalog Number:

AG1111

GenBank Accession Number:

BC007051

GeneID (NCBI):

7336

UNIPROT ID:

Q15819

Full Name:

ubiquitin-conjugating enzyme E2 variant 2

Calculated MW:

16 kDa

Observed MW:

16-20 kDa

Purification Method:

Antigen affinity purification

Recommended Dilutions:

WB 1:500-1:3000

IHC 1:400-1:1600

IF/ICC 1:10-1:100

Applications

Tested Applications:

WB, IHC, IF/ICC, ELISA

Cited Applications:

WB, IF

Species Specificity:

human, mouse, rat

Cited Species:

human, mouse

Note-IHC: suggested antigen retrieval with TE buffer pH 9.0; (*) Alternatively, antigen retrieval may be performed with citrate buffer pH 6.0

Positive Controls:

WB : HEK-293 cells, A375 cells, HeLa cells, HL-60 cells, human brain tissue, Jurkat cells, K-562 cells, rat liver tissue

IHC : human colon tissue,

IF/ICC : HeLa cells, HEK-293 cells

Notable Publications

Author	Pubmed ID	Journal	Application
Ziping Han	35906328	Transl Stroke Res	IF, WB
Fan Chai	25910425	Biochim Biophys Acta	WB, IF

Storage

Storage:

Store at -20°C. Stable for one year after shipment.

Storage Buffer:

PBS with 0.02% sodium azide and 50% glycerol pH 7.3.

Aliquoting is unnecessary for -20°C storage

*** 20ul sizes contain 0.1% BSA

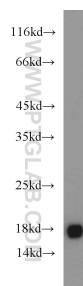
For technical support and original validation data for this product please contact:

T: 1 (888) 4PTGLAB (1-888-478-4522) (toll free in USA), or 1(312) 455-8498 (outside USA)

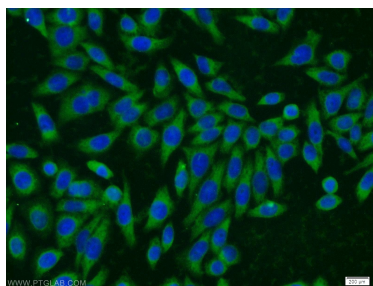
E: proteintech@ptglab.com
W: ptglab.com

This product is exclusively available under Proteintech Group brand and is not available to purchase from any other manufacturer.

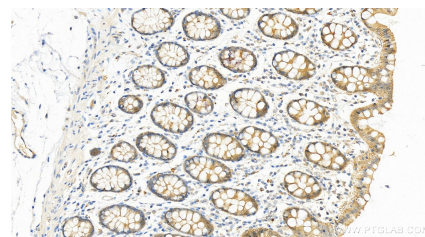
Selected Validation Data



HEK-293 cells were subjected to SDS PAGE followed by western blot with 10689-1-AP (MMS2 antibody) at dilution of 1:1500 incubated at room temperature for 1.5 hours.



Immunofluorescent analysis of HeLa cells using 10689-1-AP (MMS2 antibody) at dilution of 1:25 and Alexa Fluor 488-conjugated AffiniPure Goat Anti-Rabbit IgG(H+L).



Immunohistochemical analysis of paraffin-embedded human normal colon slide using 10689-1-AP (MMS2 antibody) at dilution of 1:800 (under 20x lens). Heat mediated antigen retrieval with Tris-EDTA buffer (pH 9.0).