

For Research Use Only

LSM5 Polyclonal antibody

Catalog Number: 10700-1-AP



Basic Information

Catalog Number: 10700-1-AP	GenBank Accession Number: BC005938	Purification Method: Antigen affinity purification
Size: 150ul , Concentration: 800 ug/ml by Nanodrop;	GeneID (NCBI): 23658	Recommended Dilutions: WB 1:200-1:1000 IHC 1:250-1:1000 IF/ICC 1:50-1:500
Source: Rabbit	UNIPROT ID: Q9Y4Y9	
Isotype: IgG	Full Name: LSM5 homolog, U6 small nuclear RNA associated (S. cerevisiae)	
Immunogen Catalog Number: AG1145	Calculated MW: 10 kDa	
	Observed MW: 10 kDa	

Applications

Tested Applications: WB, IHC, IF/ICC, ELISA	Positive Controls:
Species Specificity: human, mouse	WB : HeLa cells, HL-60 cells, human brain tissue, human placenta tissue, mouse ovary tissue
Note-IHC: suggested antigen retrieval with TE buffer pH 9.0; (*) Alternatively, antigen retrieval may be performed with citrate buffer pH 6.0	IHC : human liver cancer tissue,
	IF/ICC : HeLa cells,

Storage

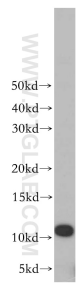
Storage:
Store at -20°C. Stable for one year after shipment.
Storage Buffer:
PBS with 0.02% sodium azide and 50% glycerol pH 7.3.
Aliquoting is unnecessary for -20°C storage

*** 20ul sizes contain 0.1% BSA

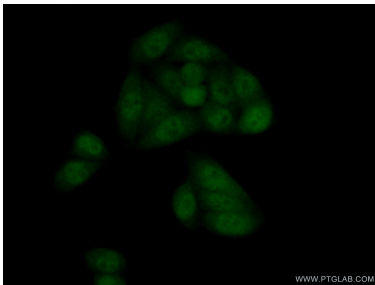
For technical support and original validation data for this product please contact:
T: 1 (888) 4PTGLAB (1-888-478-4522) (toll free in USA), or 1(312) 455-8498 (outside USA)
E: proteintech@ptglab.com
W: ptglab.com

This product is exclusively available under Proteintech Group brand and is not available to purchase from any other manufacturer.

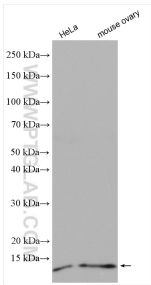
Selected Validation Data



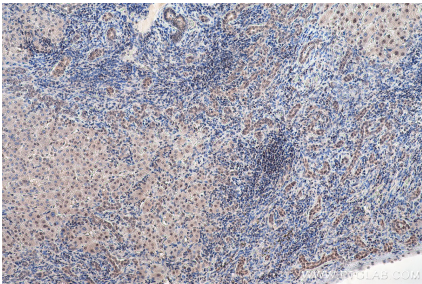
HeLa cells were subjected to SDS PAGE followed by western blot with 10700-1-AP (LSM5 antibody) at dilution of 1:100 incubated at room temperature for 1.5 hours.



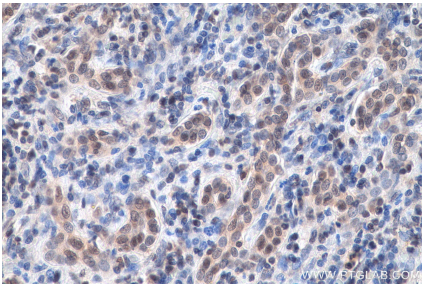
Immunofluorescent analysis of (10% Formaldehyde) fixed HeLa cells using 10700-1-AP (LSM5 antibody) at dilution of 1:50 and Alexa Fluor 488-conjugated AffiniPure Goat Anti-Rabbit IgG(H+L).



Various lysates were subjected to SDS PAGE followed by western blot with 10700-1-AP (LSM5 antibody) at dilution of 1:600 incubated at room temperature for 1.5 hours.



Immunohistochemical analysis of paraffin-embedded human liver cancer tissue slide using 10700-1-AP (LSM5 antibody) at dilution of 1:500 (under 10x lens). Heat mediated antigen retrieval with Tris-EDTA buffer (pH 9.0).



Immunohistochemical analysis of paraffin-embedded human liver cancer tissue slide using 10700-1-AP (LSM5 antibody) at dilution of 1:500 (under 40x lens). Heat mediated antigen retrieval with Tris-EDTA buffer (pH 9.0).