

For Research Use Only

VAMP3/Cellubrevin Polyclonal antibody

Catalog Number: 10702-1-AP

Featured Product

16 Publications



Basic Information

Catalog Number:

10702-1-AP

Size:

150ul, Concentration: 700 ug/ml by Nanodrop and 347 ug/ml by Bradford method using BSA as the standard;

Source:

Rabbit

Isotype:

IgG

Immunogen Catalog Number:

AG1156

GenBank Accession Number:

BC005941

GeneID (NCBI):

9341

UNIPROT ID:

Q15836

Full Name:

vesicle-associated membrane protein 3 (cellubrevin)

Calculated MW:

11 kDa

Observed MW:

11-17 kDa

Purification Method:

Antigen affinity purification

Recommended Dilutions:

WB 1:500-1:2000

IP 0.5-4.0 ug for 1.0-3.0 mg of total protein lysate

IHC 1:20-1:200

Applications

Tested Applications:

WB, IP, IHC, ELISA

Cited Applications:

WB, IHC, Blocking, IF

Species Specificity:

human, mouse, rat

Cited Species:

human, mouse, rat

Note-IHC: suggested antigen retrieval with TE buffer pH 9.0; (*) Alternatively, antigen retrieval may be performed with citrate buffer pH 6.0

Positive Controls:

WB : HEK-293 cells, MCF-7 cells, mouse brain tissue

IP : HEK-293 cells,

IHC : human heart tissue, human kidney tissue

Background Information

VAMP3, also named as cellubrevin or synaptobrevin 3, is a member of the vesicle-associated membrane protein (VAMP)/synaptobrevin family. VAMP3 is a v-SNARE (soluble NSF-attachment protein receptor). Characterized by a common sequence called the SNARE motif, SNARE proteins are involved in membrane fusion and vesicular transport (PMID: 11252968). VAMP3 resides in recycling endosomes and endosome-derived transport vesicles, involved in regulating membrane traffic. It is implicated in recycling of transferrin receptors, secretion of alpha-granules in platelets, and membrane trafficking during cell migration.

Notable Publications

Author	Pubmed ID	Journal	Application
Yonglu Che	31712554	Nat Commun	WB,IF
Juan-Juan Zhu	33224946	Front Cell Dev Biol	IF
Xiaoli Wang	29785746	Proteomics	WB

Storage

Storage:

Store at -20°C. Stable for one year after shipment.

Storage Buffer:

PBS with 0.02% sodium azide and 50% glycerol pH 7.3.

Aliquoting is unnecessary for -20°C storage

*** 20ul sizes contain 0.1% BSA

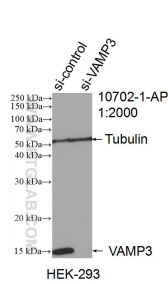
For technical support and original validation data for this product please contact:

T: 1 (888) 4PTGLAB (1-888-478-4522) (toll free in USA), or 1(312) 455-8498 (outside USA)

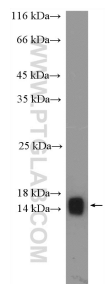
E: proteintech@ptglab.com
W: ptglab.com

This product is exclusively available under Proteintech Group brand and is not available to purchase from any other manufacturer.

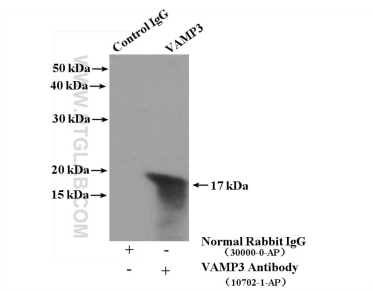
Selected Validation Data



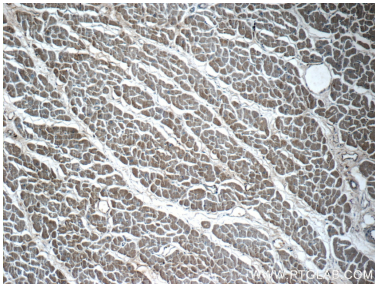
WB result of VAMP3/Cellubrevin antibody (10702-1-AP; 1:2000; incubated at room temperature for 1.5 hours) with sh-Control and sh-VAMP3/Cellubrevin transfected HEK-293 cells.



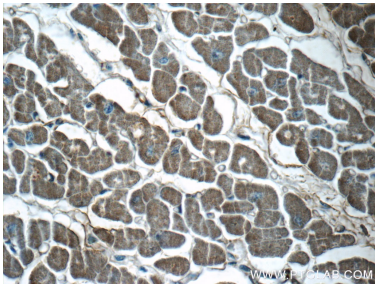
HEK-293 cells were subjected to SDS PAGE followed by western blot with 10702-1-AP (VAMP3/Cellubrevin antibody) at dilution of 1:1000 incubated at room temperature for 1.5 hours.



IP result of anti-VAMP3/Cellubrevin (IP:10702-1-AP, 4ug; Detection:10702-1-AP 1:1000) with HEK-293 cells lysate 3000ug.



Immunohistochemical analysis of paraffin-embedded human heart tissue slide using 10702-1-AP (VAMP3/Cellubrevin antibody) at dilution of 1:50 (under 10x lens).



Immunohistochemical analysis of paraffin-embedded human heart tissue slide using 10702-1-AP (VAMP3/Cellubrevin antibody) at dilution of 1:50 (under 40x lens).