

## Cytokeratin 19 Polyclonal antibody

Catalog Number: 10712-1-AP

158 Publications

## Basic Information

## Catalog Number:

10712-1-AP

## Size:

150ul, Concentration: 600 ug/ml by Nanodrop;

## Source:

Rabbit

## Isotype:

IgG

## Immunogen Catalog Number:

AG1085

## GenBank Accession Number:

BC007628

## GeneID (NCBI):

3880

## UNIPROT ID:

P08727

## Full Name:

keratin 19

## Calculated MW:

40 kDa

## Observed MW:

44-50 kDa

## Purification Method:

Antigen affinity purification

## Recommended Dilutions:

WB: 1:3000-1:30000

IHC: 1:10000-1:40000

IF-P: 1:10-1:100

IF/ICC: 1:200-1:800

FC (Intra): 0.80 ug per 10<sup>6</sup> cells in a 100 µl suspension

## Applications

## Tested Applications:

WB, IHC, IF/ICC, IF-P, FC (Intra), ELISA

## Cited Applications:

WB, IHC, IF

## Species Specificity:

human, mouse

## Cited Species:

human, mouse, rat, pig, canine, goat, dog

**Note-IHC: suggested antigen retrieval with TE buffer pH 9.0; (\*) Alternatively, antigen retrieval may be performed with citrate buffer pH 6.0**

## Positive Controls:

**WB:** A431 cells, A549 cells, mouse brain tissue, mouse placenta tissue, HepG2 cells, HT-29 cells

**IHC:** human colon tissue, human breast cancer tissue, human lung cancer tissue, human oesophagus cancer tissue, human pancreas tissue, human skin tissue, human stomach cancer tissue, human thyroid cancer tissue, mouse colon tissue, mouse pancreas tissue, mouse skin tissue

**IF-P:** Retinal organoids, mouse pancreas tissue

**IF/ICC:** HaCaT cells, HeLa cells, HepG2 cells

**FC (Intra):** MCF-7 cells,

## Background Information

Cytokeratin 19 (CK19 or KRT19) is a type I (acidic) cytokeratin. It is an intermediate filament protein providing structural rigidity and multipurpose scaffolds in epithelial cells. CK19 is often overexpressed in various cancers (e.g., hepatocellular carcinoma [HCC], pancreatic adenocarcinoma, lung cancer) and serves as a biomarker for hepatic progenitor cells (HPCs) associated with poor prognosis in HCC patients. Additionally, CK19 expression is common in pancreatic and gastrointestinal adenocarcinomas and has been studied as a potential diagnostic and prognostic marker for pancreatic neuroendocrine tumors (PNETs), where positive CK19 expression correlates with poor prognosis. Serum CK19 fragments (e.g., CYFRA 21-1, CK19-2G2) have been investigated as tumor markers for lung and breast cancer, with preoperative levels associated with metastasis and survival.

## Notable Publications

Author	Pubmed ID	Journal	Application
Takako Tabata	31569508	Vaccines (Basel)	IF
Sandra Ruiz García	31558434	Development	IF
Zichun Gu	28975248	JAMA Facial Plast Surg	IHC

## Storage

## Storage:

Store at -20°C. Stable for one year after shipment.

## Storage Buffer:

PBS with 0.02% sodium azide and 50% glycerol, pH7.3

Aliquoting is unnecessary for -20°C storage

\*\*\* 20ul sizes contain 0.1% BSA

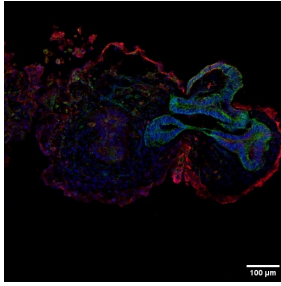
For technical support and original validation data for this product please contact:

T: 1 (888) 4PTGLAB (1-888-478-4522) (toll free in USA), or 1(312) 455-8498 (outside USA)

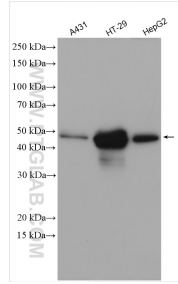
E: [proteintech@ptglab.com](mailto:proteintech@ptglab.com)  
 W: [ptglab.com](http://ptglab.com)

**This product is exclusively available under Proteintech Group brand and is not available to purchase from any other manufacturer.**

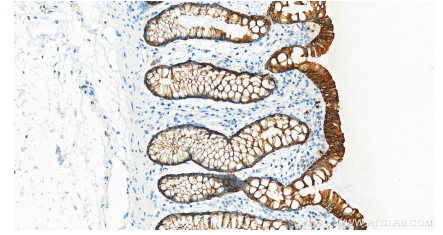
## Selected Validation Data



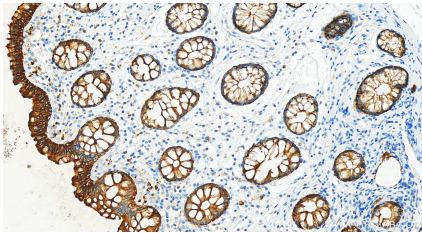
Retinal organoids (day 60) generated from human induced pluripotent stem cells (iPSCs) and fixed with 4% PFA. Stained for Tubulin beta 3/TUJ1 using 66375-1-Ig at 1:500 dilution (green) and Cytokeratin 19 using 10712-1-AP at 1:200 (red). Nuclear stain DAPI (blue). Scale bar = 100  $\mu$ m. Data generated by Alessandro Bellapianta at Johannes Kepler Universitat, Austria.



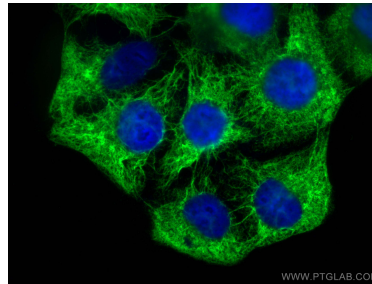
Various lysates were subjected to SDS PAGE followed by western blot with 10712-1-AP (Cytokeratin 19 antibody) at dilution of 1:5000 incubated at room temperature for 1.5 hours.



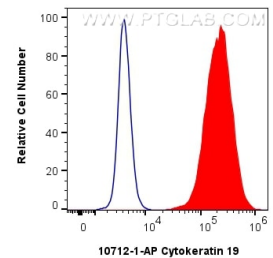
Immunohistochemical analysis of paraffin-embedded human colon tissue slide using 10712-1-AP (Cytokeratin 19 antibody) at dilution of 1:20000 (under 20x lens). Heat mediated antigen retrieval with Tris-EDTA buffer (pH 9.0).



Immunohistochemical analysis of paraffin-embedded human colon tissue slide using 10712-1-AP (Cytokeratin 19 antibody) at dilution of 1:20000 (under 20x lens). Heat mediated antigen retrieval with Tris-EDTA buffer (pH 9.0).



Immunofluorescent analysis of (-20°C Methanol) fixed HaCaT cells using Cytokeratin 19 antibody (10712-1-AP) at dilution of 1:400 and CoraLite® 488-Conjugated AffiniPure Goat Anti-Rabbit IgG(H+L).



$1 \times 10^6$  MCF-7 cells were intracellularly stained with 0.8  $\mu$ g Cytokeratin 19 Polyclonal antibody (10712-1-AP) and CoraLite® 488-Conjugated AffiniPure Goat Anti-Rabbit IgG(H+L) (SA00013-2) (red), or 0.8  $\mu$ g Rabbit IgG control Rabbit PolyAb (30000-0-AP) (blue). Cells were fixed with 4% PFA and permeabilized with Flow Cytometry Perm Buffer (PF00011-C).