

For Research Use Only

Ferritin light chain Polyclonal antibody

Catalog Number: 10727-1-AP

Featured Product

193 Publications



Basic Information

Catalog Number:

10727-1-AP

Size:

150ul, Concentration: 800 ug/ml by Nanodrop;

Source:

Rabbit

Isotype:

IgG

Immunogen Catalog Number:

AG1149

GenBank Accession Number:

BC008439

GeneID (NCBI):

2512

UNIPROT ID:

P02792

Full Name:

ferritin, light polypeptide

Calculated MW:

19 kDa

Observed MW:

18-20 kDa

Purification Method:

Antigen affinity purification

Recommended Dilutions:

WB: 1:2000-1:10000

IP: 0.5-4.0 ug for 1.0-3.0 mg of total protein lysate

IHC: 1:50-1:500

IF/ICC: 1:200-1:800

Applications

Tested Applications:

WB, IHC, IF/ICC, IP, ELISA

Cited Applications:

WB, IHC, IF, IP, CoIP

Species Specificity:

human, mouse, rat

Cited Species:

human, mouse, rat, monkey, duck

Note-IHC: suggested antigen retrieval with TE buffer pH 9.0; (*) Alternatively, antigen retrieval may be performed with citrate buffer pH 6.0

Positive Controls:

WB: mouse liver tissue, human placenta tissue, mouse ovary tissue, mouse testis tissue, mouse spleen tissue, rat liver tissue

IP: mouse liver tissue,

IHC: human liver tissue, human liver cancer tissue, mouse spleen tissue, human spleen tissue

IF/ICC: A549 cells,

Background Information

FTL belongs to the ferritin family. It stores iron in a soluble, non-toxic, readily available form. FTL is important for iron homeostasis. It plays a role in delivery of iron to cells. FTL mediates iron uptake in capsule cells of the developing kidney. Mutation of FTL will cause hereditary hyperferritinemia-cataract syndrome (HHCS) or neurodegeneration with brain iron accumulation type 3 (NBIA3). Ferritin light polypeptide (FTL) and ferritin heavy polypeptide (FTH1) were the main constituents the striatum and cerebellar cortex revealed.

Notable Publications

Author	Pubmed ID	Journal	Application
Lalit Pukhrambam Singh	35187384	JOJ Ophthalmol	WB
Hailong Gong	36164395	Oxid Med Cell Longev	WB
Xiaopeng Cai	36094079	ACS Appl Mater Interfaces	WB

Storage

Storage:

Store at -20°C. Stable for one year after shipment.

Storage Buffer:

PBS with 0.02% sodium azide and 50% glycerol, pH7.3

Aliquoting is unnecessary for -20°C storage

*** 20ul sizes contain 0.1% BSA

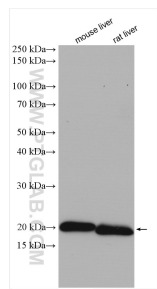
For technical support and original validation data for this product please contact:

T: 1 (888) 4PTGLAB (1-888-478-4522) (toll free in USA), or 1(312) 455-8498 (outside USA)

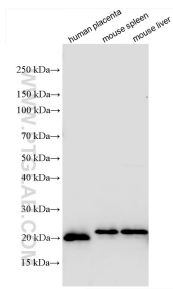
E: proteintech@ptglab.com
W: ptglab.com

This product is exclusively available under Proteintech Group brand and is not available to purchase from any other manufacturer.

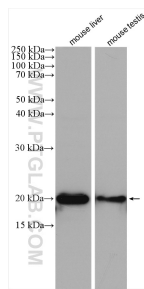
Selected Validation Data



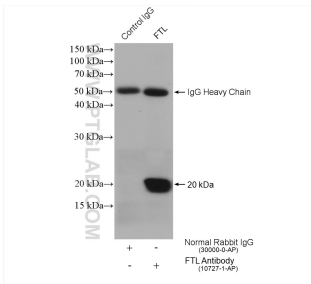
Various lysates were subjected to SDS PAGE followed by western blot with 10727-1-AP (Ferritin light chain antibody) at dilution of 1:5000 incubated at room temperature for 1.5 hours.



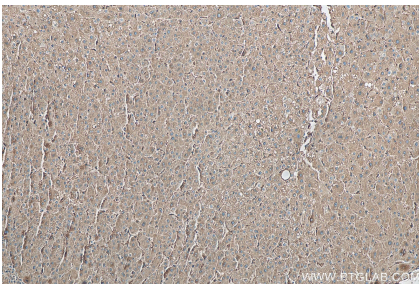
Various lysates were subjected to SDS PAGE followed by western blot with 10727-1-AP (Ferritin light chain antibody) at dilution of 1:1000 incubated at room temperature for 1.5 hours.



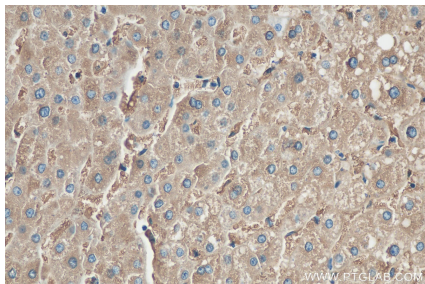
Various lysates were subjected to SDS PAGE followed by western blot with 10727-1-AP (Ferritin light chain antibody) at dilution of 1:1000 incubated at room temperature for 1.5 hours.



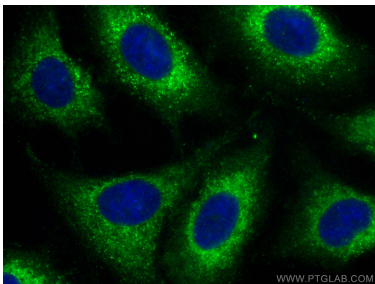
IP result of anti-Ferritin light chain (IP:10727-1-AP, 4ug; Detection:10727-1-AP 1:1000) with mouse liver tissue lysate 3040 ug.



Immunohistochemical analysis of paraffin-embedded human liver tissue slide using 10727-1-AP (Ferritin light chain antibody) at dilution of 1:200 (under 10x lens). Heat mediated antigen retrieval with Tris-EDTA buffer (pH 9.0).



Immunohistochemical analysis of paraffin-embedded human liver tissue slide using 10727-1-AP (Ferritin light chain antibody) at dilution of 1:200 (under 40x lens). Heat mediated antigen retrieval with Tris-EDTA buffer (pH 9.0).



Immunofluorescent analysis of (-20°C Methanol) fixed A549 cells using Ferritin light chain antibody (10727-1-AP) at dilution of 1:400 and CoraLite®488-Conjugated Goat Anti-Rabbit IgG(H+L) (SA00013-2).